

## 660 Lower King Road, LOWER KING, WA 6330

### Provincial Stunner on Huge Block near Water

If modern cookie-cutter homes don't float your boat, and it is character, soul, and unique style that get your juices flowing, this incredible home and property will blow your mind. Think insanely cool home, massive block, and sensational location near the river and harbor, in a leafy environment within easy reach of town. Think British countryside meets provincial France, meets Bali chill, meets Aussie lifestyle - this place is absolutely incredible and you won't find anything else on a par.

The home itself has been almost entirely modernised and although full of charm and charisma, presents the best of modern living and a functional and appealing layout that suits utter comfort and enjoying life to the max, both inside the terrific home, and in the beautiful gardens.

Natural light streams into the country-style kitchen which is utterly modern with bespoke cabinetry, glass splashbacks and high-end appliances. This is a place to cook up a storm and even comes with a cute spot to enjoy a coffee or croissant in the morning, or tea in the arvo. Step down to dining and lounge rooms that are excellently sized but super cosy, with timber beams, bay windows with seats, and a brick fireplace with a quite incredible copper flue - these are stunning rooms and transport you to a British country pub. Add a big games room, fab bedrooms, study and office, and this floorplan delivers versatility for whatever your family needs.

The particulars contained herein are supplied for information only and shall not be taken as a representation in any respect on the part of the vendor or its agent. Interested parties should contact the nominated person or office for full and current details.

**TYPE:** For Sale

**INTERNET ID:** 300P181988

**SALE DETAILS**

**Offers above \$990,000**

**CONTACT DETAILS**

**Albany Real Estate**  
189 Chester Pass Road  
ALBANY, WA  
08 9842 7900

**Blair Scott**  
0459 024 026

Outside, a huge covered patio provides undercover area for kids play, or an entertaining base for drinks or BBQ while you enjoy the grounds. Play boules or cricket, enjoy a fire pit, watch the chooks roam, or tend to fruit and veg - options are limited by only your imagination. A powered shed rounds off the deal, with plenty of space for vehicles, storage, and workshop area.

If the tremendous half acre isn't enough to keep you entertained, take a walk to the river or harbour to walk the dog, fish, or launch a kayak, or invest in a boat and launch from the nearby boat ramp to easily access the ocean and catch a fish or squid for dinner.

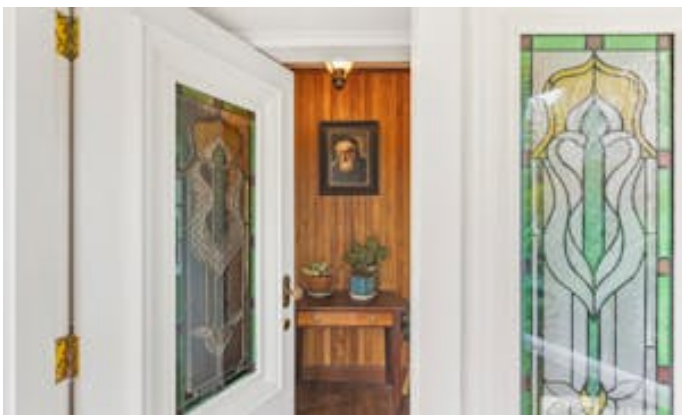
This property delivers stupendous character and an exceptional lifestyle opportunity in a sensational position.

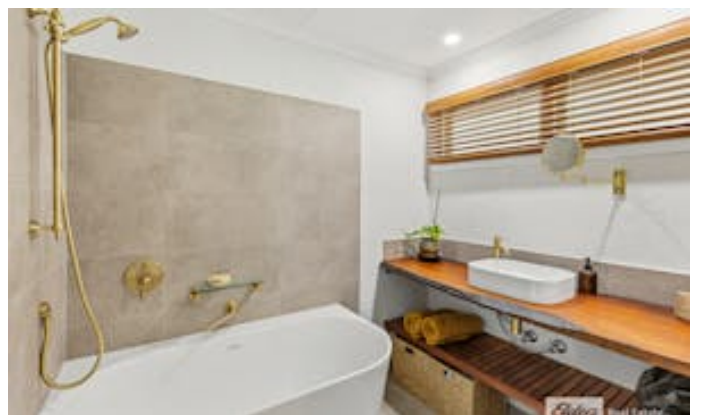
- Incredible country home with the most incredible character and atmosphere
- Full of quiriness and charm with huge variety of character features - natural timber and stone, recycled timber doors, original leadlight doors and windows, and real brass tapware
- Brilliantly set up for the best of modern and comfortable living both inside and out
- Light-filled and beautiful, fully modern country-style kitchen with dishwasher, six-burner gas cooktop, and 900mm electric oven
- Large sunken dining area, timber beams, lush carpet and French doors to patio
- Amazing lounge with timber window seat, timber beams, and sensational copper fireplace (think British country pub!)
- Huge games room or artists retreat with storage
- Generous attic-style bedrooms
- Modern uber-stylish but relaxed bathrooms with feature timber and stone
- Study snug plus large office that could potentially be used for an extra bedroom
- Expansive private patio overlooking back garden, perfect for afternoon drinks and games
- Huge 2,075sqm lot, over half an acre, with abundant fruit trees, heaps of rooms for chooks and veggies
- Gardens include range of mature trees and lawns, really great spaces to enjoy and entertain family and friends
- Powered shed approx. 7.5m by 7m suitable for boat, van, storage, workshop
- Amazing location on the doorstep of King River and Oyster Harbour, for kayaking, fishing, crabbing and more
- Lower King Boat ramp very close by, with easy access to Middleton Bay and Ocean
- Great Southern Grammar just down the road and short drive to thriving Albany
- Be sure to explore this gem with our 3D virtual tour!

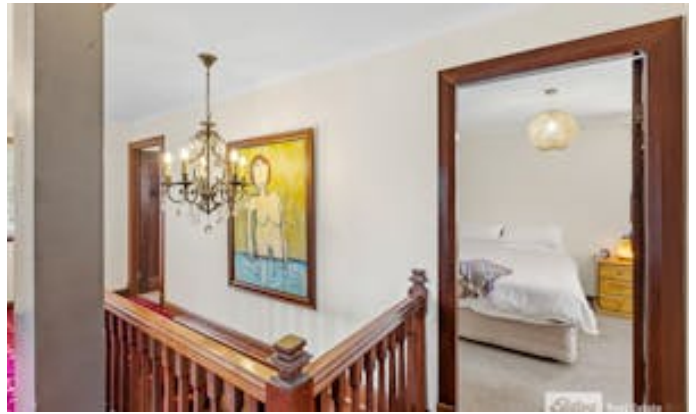
660 Lower King Rd presents a one off opportunity to secure an incredible home and lifestyle. For your private inspection or more information please contact Blair Scott on 0459 024 026.

Other features: Close to Shops

- Land Area 2,076.00 square metres
- Building Area: 190.00 square metres
- Bedrooms: 4
- Bathrooms: 2
- Single garage
- Single carport
- Ensuite



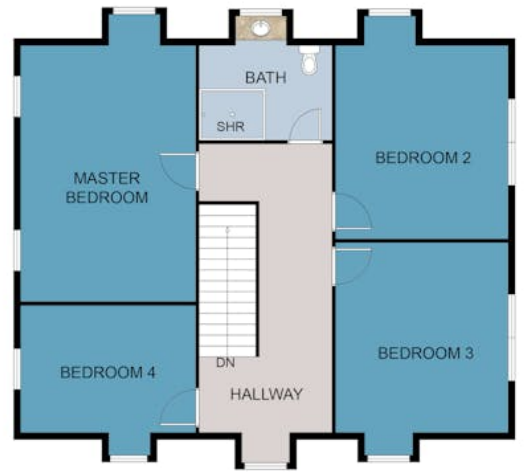








LOWER FLOOR PLAN



UPPER FLOOR PLAN

This floor plan including furniture, fixture measurements and dimensions are approximate and for illustrative purposes only. BoxBrownie.com gives no guarantee, warranty or representation as to the accuracy and layout. All enquiries must be directed to the agent, vendor or party representing this floor plan.

660 Lower King Rd, Lower King