

3 Ewington Way, ROMAINE, TAS 7320

A Home Like No Other — Never Before Offered!

For the very first time, this beautiful family home is hitting the market-and it's one you won't want to miss! Built and lovingly maintained by its original owners, 3 Ewington Way is a true showcase of style, space, and thoughtful design, never before offered for sale.

Step inside and be greeted by soaring high ceilings in the living area and floods of natural light that make the lower living area feel expansive and uplifting. The open-plan kitchen and dining area is the heart of the home, perfect for whipping up family meals or entertaining friends, while the two generous living areas offer plenty of space to relax, play, or catch up with loved ones.

With four spacious bedrooms, each fitted with built-in wardrobes, and a master suite complete with walk-in robe, everyone in the family has their own private retreat. Adding a touch of versatility, there's an additional room, ideal for children, a hobby space, or even a home office. Two beautifully appointed bathrooms ensure mornings run smoothly, even for the busiest households.

Entertaining is effortless with a large undercover outdoor area that flows seamlessly onto a sun-drenched timber deck-perfect for weekend barbecues, evening drinks, or simply soaking up the sunshine. And with a large garden shed, a double internal garage, and a well-maintained yard, practicality meets lifestyle in every corner of the

The particulars contained herein are supplied for information only and shall not be taken as a representation in any respect on the part of the vendor or its agent. Interested parties should contact the nominated person or office for full and current details.

TYPE: For Sale

INTERNET ID: 300P182079

SALE DETAILS

\$840,000 - \$870,000

CONTACT DETAILS

Elders Real Estate Burnie

72-74 Wilson Street

Burnie, TAS

03 6432 2311

Amy Davidson

0457 529 388

property.

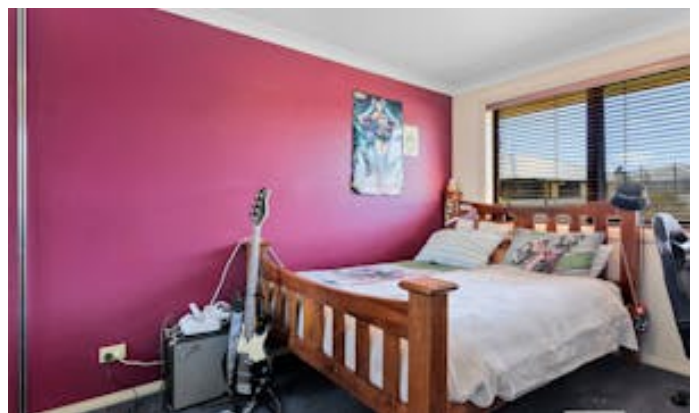
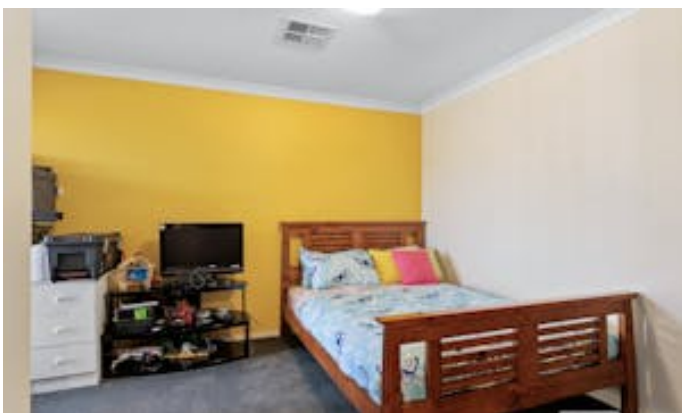
What truly sets this home apart are the lovely glass doors that welcome the outdoors in, the thoughtful layout that balances space and intimacy, and the sense of care and warmth that comes from a home that has been cherished from the start. Whether it's family life, entertaining friends, or quiet relaxation, this home delivers on every level.

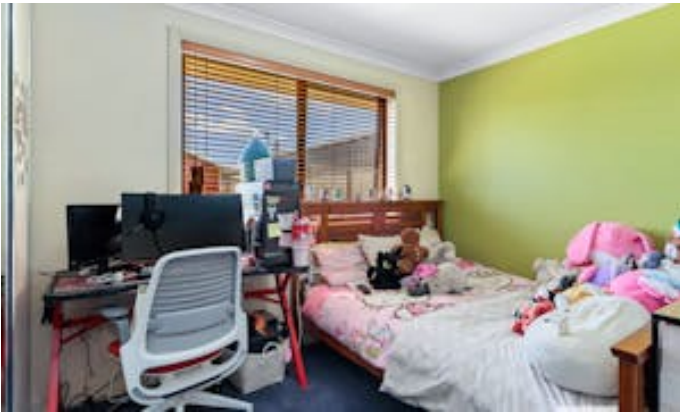
Set in a quiet, desirable pocket of Romaine, 3 Ewington Way is not just a house-it's a home with heart, style, and room to grow. This is a rare opportunity to step into a property that has been crafted, loved, and maintained for a lifetime-and now it's ready for you to make your own. Contact Amy Davidson or Tyrah Bacon today to arrange an inspection.

DISCLAIMER: While Elders Real Estate Burnie has taken every care to verify the accuracy of the details in this advertisement, we cannot guarantee its correctness. Prospective buyers or tenants need to take such action as is necessary, to satisfy themselves of any pertinent matters

- Land Area 869.00 square metres
- Building Area: 198.00 square metres
- Bedrooms: 4
- Bathrooms: 2
- Double garage



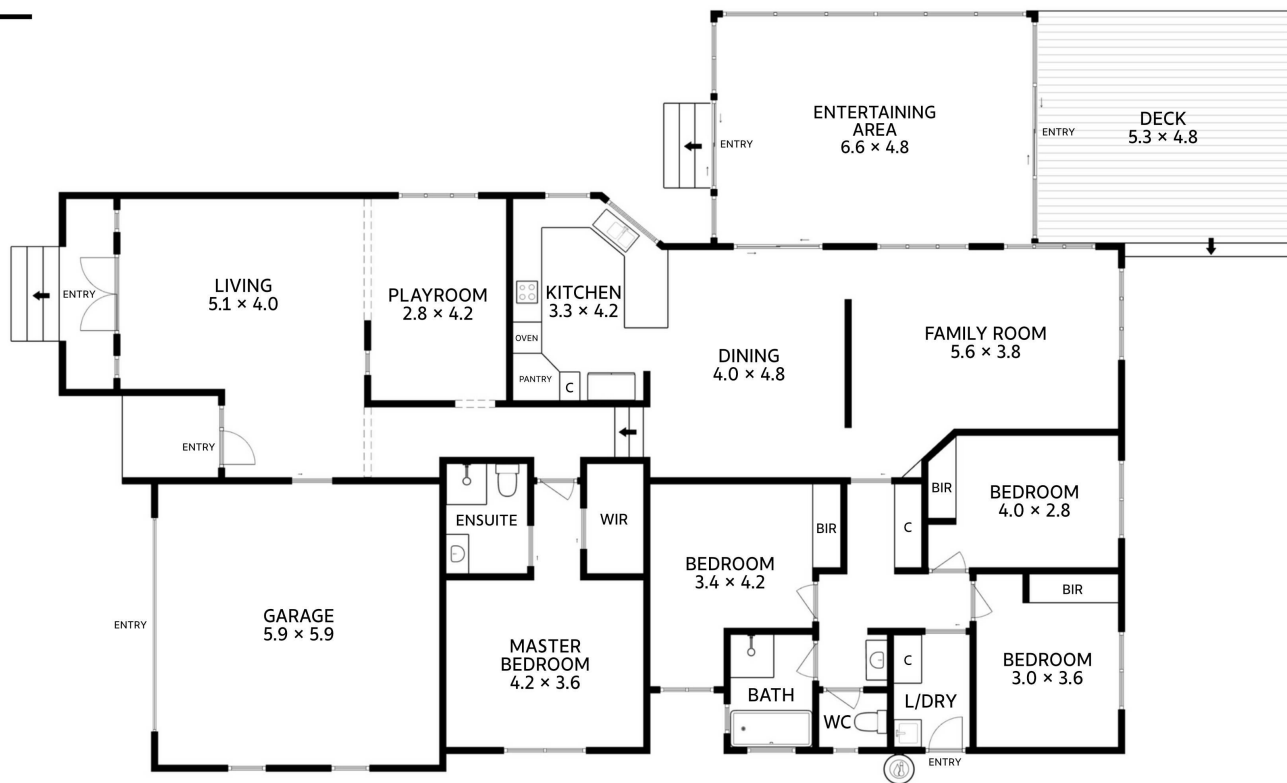








3 Ewington Way Romaine



Approx. Floor Area 258 sq m
(excluding deck)

All measurements are internal and approximate.
This plan is a sketch for illustration, not valuation.

