

## 20312 Bass Highway, COWRIE POINT, TAS 7321

### Stunning Waterfront Location

- Absolute water frontage with awesome Bass Strait ocean views
- Modern design, open plan living onto a large deck
- Ideal retirement property, low maintenance
- Separate detached room, great for guest accommodation or studio (with toilet)
- Easy commuting distance between Smithton and Wynyard

- Land Area 724.00 square metres
- Bedrooms: 3
- Bathrooms: 2
- Car Parks: 1

**TYPE:** For Sale

**INTERNET ID:** 300P182324

#### SALE DETAILS

**Offers Over \$699,000**

#### CONTACT DETAILS

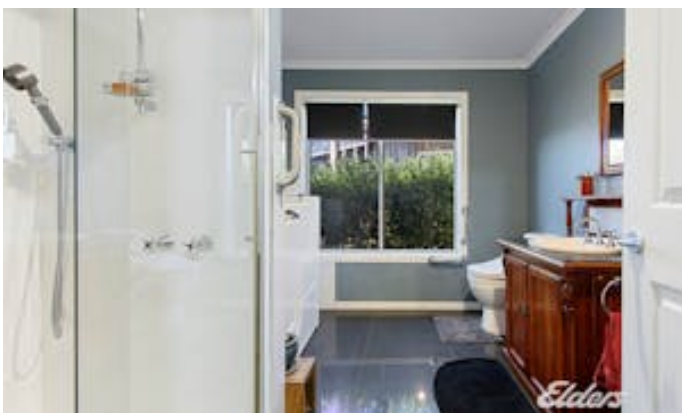
,

**Duncan Spinks**  
0429 352 004

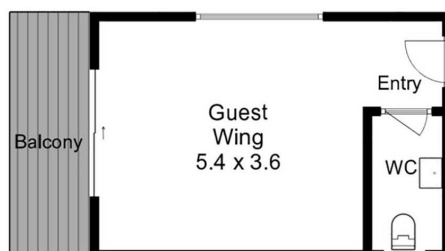
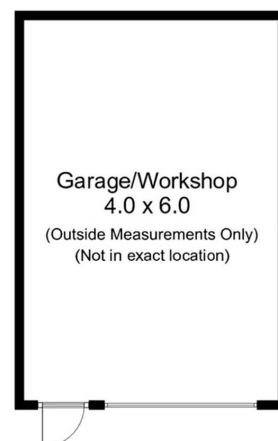
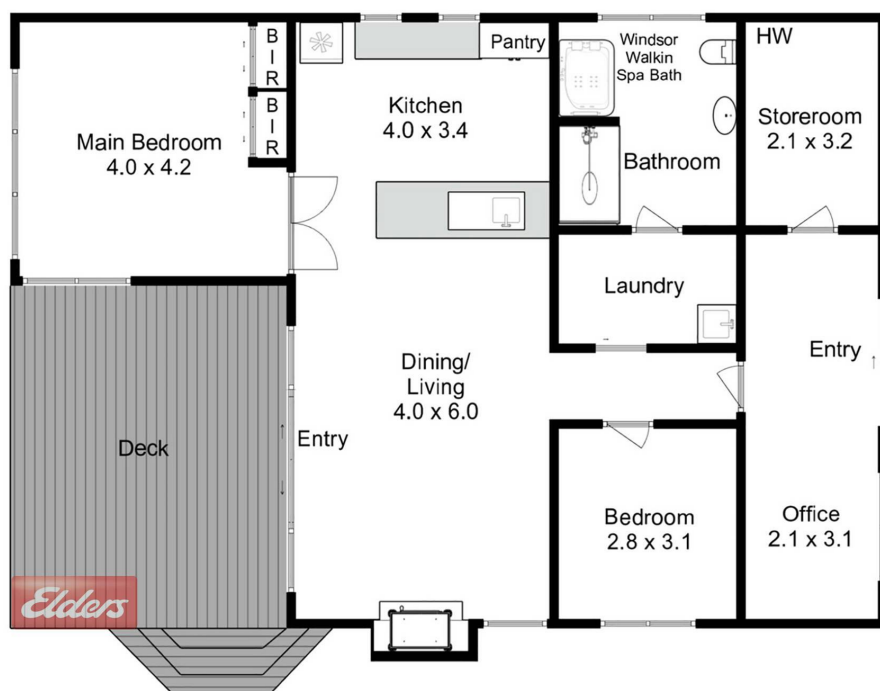












Elders Circular Head  
Not to scale.  
This floorplan is a sketch, and all dimensions stated are approximate.  
Approx floor area 104 sq m  
Excluding Garage/W/shop, Deck, Guest Wing + Balcony  
© Real Image Tasmania

