



## 65 Homburg Drive, MURRAY BRIDGE, SA 5253

### Fantastic Opportunity on Corner Allotment

Set on an 812m<sup>2</sup> corner allotment, this solid timber-frame home presents an outstanding opportunity for first-home buyers, investors, renovators, or those seeking space and potential.

Built in 1975, the home offers three comfortable bedrooms, one bathroom, and a practical open-plan layout combining the kitchen, dining, and living areas to create a welcoming central hub for family living.

Outside, the property has vehicle access to the backyard, a large 5.4m x 6.2m powered shed with a concrete floor, plus an additional 6m x 5m shed providing plenty of storage and workspace options.

Whether you're looking to move straight in, add value through renovation, or secure a property with potential, this property is packed with possibilities.

#### Property Features:

- Generous 812m<sup>2</sup> corner allotment

The particulars contained herein are supplied for information only and shall not be taken as a representation in any respect on the part of the vendor or its agent. Interested parties should contact the nominated person or office for full and current details.

**TYPE:** For Sale

**INTERNET ID:** 300P182462

#### SALE DETAILS

**\$550,000**

#### CONTACT DETAILS

**Murray Bridge**

Shop 3, 7 Seventh Street

Murray Bridge, SA

08 8572 8000

RLA: 62833

**Ali Bolt**

0437 290 698

- Solid timber-frame home built in 1975
- 3 bedrooms, 1 bathroom
- Open-plan kitchen, dining and living area
- Convenient backyard access
- Good Shedding
- Excellent opportunity for investors, renovators, and first-home buyers

A property offering space, functionality, and future potential in a convenient Murray Bridge location.

For more information or for a FREE market appraisal of your property, please contact Ali Bolt on 0437 290 698.

CT - Volume 5537 Folio 171

Council - Rural City of Murray Bridge

Council Rates - TBA

Zoning - Suburban Neighbourhood - SN

Disclaimer:

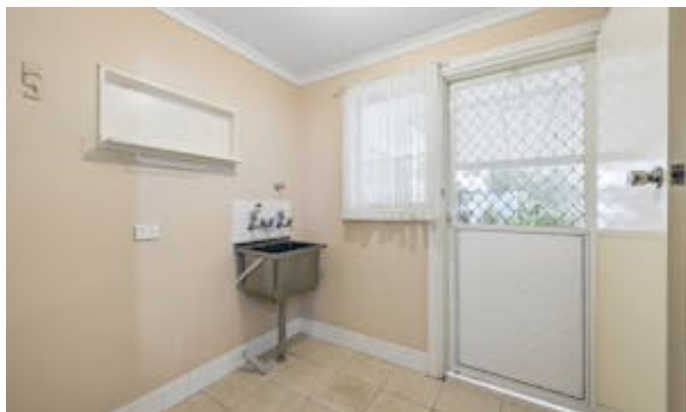
We have in preparing this information used our best endeavours to ensure that the information contained herein is true and accurate but accept no responsibility and disclaim all liability in respect of any errors, omissions, inaccuracies, or misstatements that may occur. Prospective purchasers should make their own enquiries to verify the information contained herein.

Elders Real Estate RLA62833

- Land Area 812.00 square metres
- Bedrooms: 3
- Bathrooms: 1
- Car Parks: 2

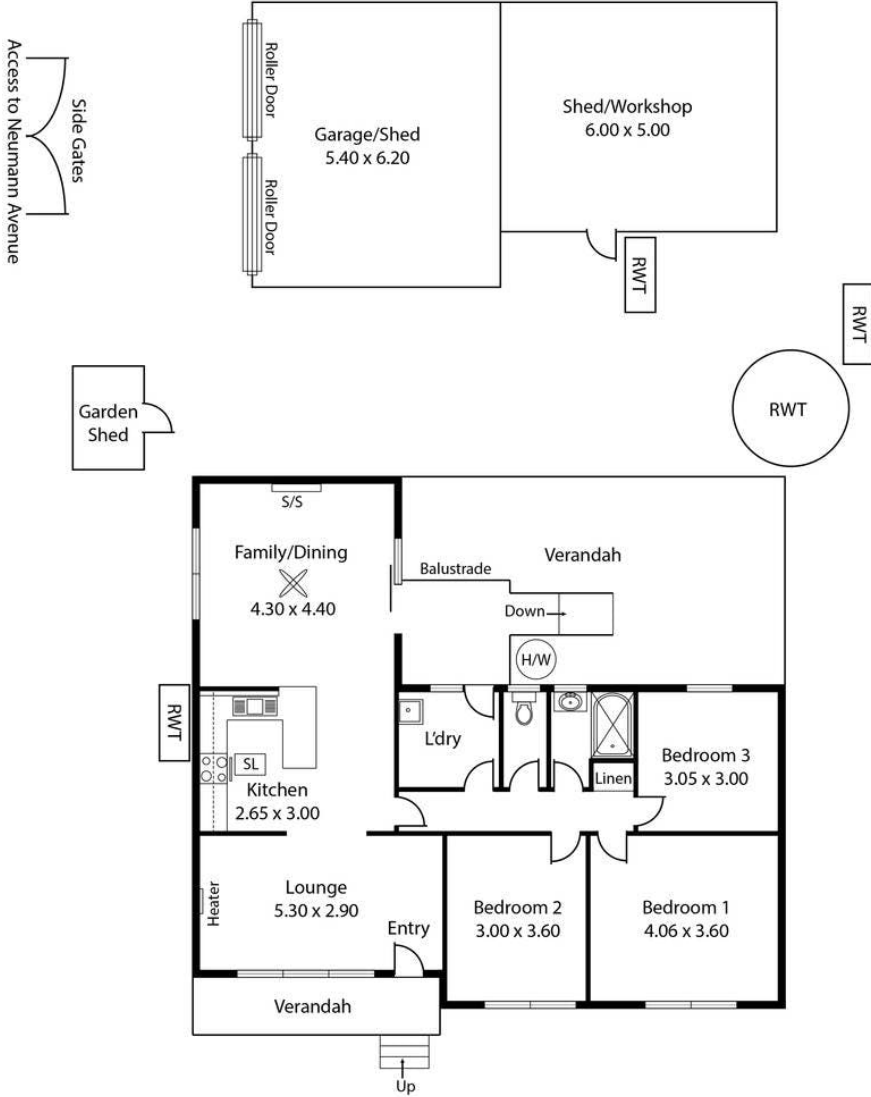








65 Homburg Drive,  
MURRAY BRIDGE



Living:	109.90 sqm
Verandah:	44.28 sqm
Workshop:	30.00 sqm
Garage/Shed:	33.48 sqm
<b>Total:</b>	<b>217.66 sqm</b>

This Drawing is for illustration purposes only.  
Not To Scale. All measurements are internal and approximate.  
Details intended to be relied upon should be independently verified.  
Produced by [Open2view.com](http://Open2view.com)