



1 Bowman Street, REDHILL, SA 5521

The Eureka Hotel

Steeped in history and rich with character, the iconic Eureka Hotel at 1 Bowman Street, Redhill, offers a rare and exciting opportunity to own a piece of South Australian heritage. Built in 1878, this grand two-storey building showcases timeless architecture and old-world charm, standing proudly as a local landmark in the heart of Redhill.

The main hotel comprises nine generously sized bedrooms, two functional bathrooms with additional facilities ready for renovation or use, and a spacious layout that includes a formal dining room, comfortable lounge area, and an unequipped bar space just waiting for its next chapter. A large cellar beneath the building provides ample storage or potential for a unique wine or tasting room.

To the rear of the property sits a separate two-storey coach house, further enhancing the historic appeal and offering endless potential for guest accommodation, a studio, or additional income streams.

The commercial-grade kitchen provides the framework for hospitality ventures, supported by newly updated electrical work in key areas of the property, helping to pave the way for future upgrades or business operations.

TYPE: For Sale

INTERNET ID: 300P182526

SALE DETAILS

Contact Agent

CONTACT DETAILS

Elders Real Estate Clare Valley / Burra

230 Main North Road
Clare, SA
08 8842 9300

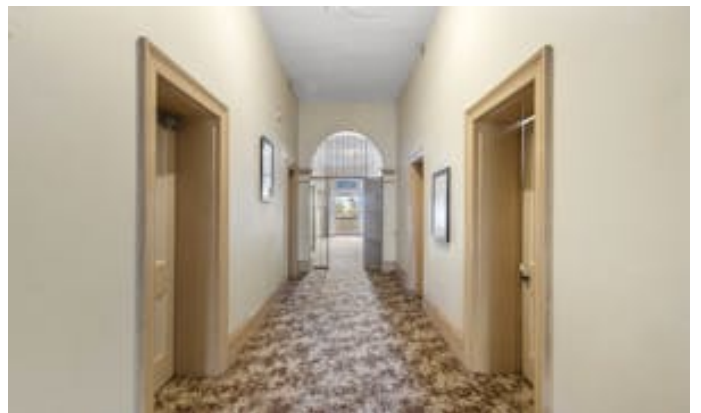
Rob Calaby
0428560301

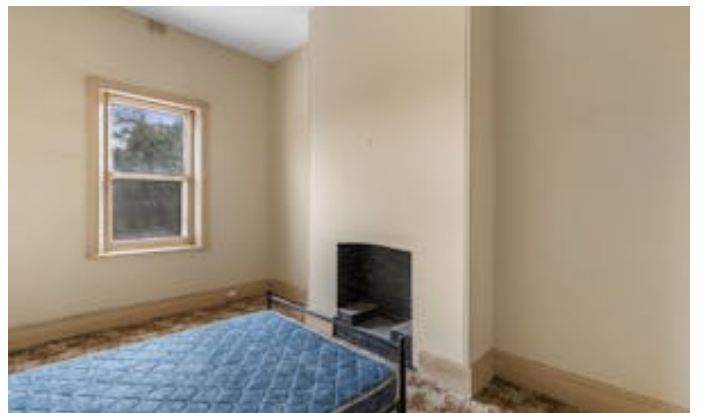
Perfectly positioned in Redhill, a picturesque rural township with great access to regional centres, the Eureka Hotel is a standout opportunity for renovators, investors, or visionaries looking to breathe new life into a truly special property. Whether you're inspired to restore it as a boutique hotel, restaurant, bed and breakfast, or create a unique private residence, the possibilities are endless.

Offering heritage, space, and a commanding presence, the Eureka Hotel is ready for its next era â## a canvas awaiting your vision.

- Land Area 2,027.00 square metres
- Bedrooms: 9
- Bathrooms: 2
- 6 car garage











Living:	457.27sqm
Verandah:	69.60sqm
Balcony:	31.20sqm
Entertaining/Cellar:	111.00sqm
Total:	669.07sqm

This Drawing is for illustration purposes only.
All measurements are internal and approximate.
Details intended to be relied upon should be
independently verified.
Produced by Open2view.com