



61 Brickport Road, PARK GROVE, TAS 7320

Coastal Luxury Meets Family Comfort in Coveted Park Grove

Wake up to sweeping ocean vistas in one of Burnie's most sought-after suburbs! This stunning four-bedroom plus study home offers multiple living zones, a designer kitchen, ducted air conditioning, and an expansive covered deck perfect for entertaining year-round. All just minutes from the CBD, hospitals, and top-rated schools.

With commanding views over Bass Strait and an enviable position in one of Burnie's most desirable suburbs, this contemporary residence offers space, style, and a lifestyle to match. Perfect for families, professionals, and retirees, it's ideally located within walking distance of both the North-West Regional Hospital and North-West Private Hospital, and moments from highly regarded schools including Marist Regional College, Stella Maris Catholic Primary, and Burnie Primary.

Standout Features:

Panoramic Ocean Views ## Enjoy uninterrupted sea vistas from your expansive covered deck and main living areas.

Multiple Living Zones ## A spacious open-plan kitchen, dining, and living area plus a separate family room, perfect for a home theatre, kids' play area, or parents' retreat.

TYPE: For Sale

INTERNET ID: 300P182900

SALE DETAILS

Offers Over \$890,000

CONTACT DETAILS

Elders Real Estate Burnie
72-74 Wilson Street
Burnie, TAS
03 6432 2311

Shane Walker

Designer Kitchen ### Sleek island bench, walk-in pantry, quality appliances, and ample storage, designed for entertainers and home cooks alike.

Four Generous Bedrooms + Study ### Master suite with dual walk-in robes and a private ensuite, plus built-in robes to all other bedrooms.

Luxury Bathrooms ### Modern family bathroom with separate shower and bath, plus a large, light-filled ensuite.

Year-Round Comfort ### Ducted air conditioning throughout plus additional reverse-cycle unit in the 2nd largest bedroom.

Practical Layout ### Double garage with internal access (incorporating the laundry), and under-house storage.

Easy Care Gardens ### Low maintenance gardens allow you to really enjoy your home time.

The Lifestyle & Location:

Park Grove is known for its friendly streets, elevated coastal outlooks, and unmatched convenience. You'll be just minutes walk from the local Gym and pool, West Park Nursery and Secret Budda Caf  as well as the local IGA, Netball Centre, Tennis Club and Burnie Park. This tightly held area is a favourite among medical professionals, families, and those seeking a peaceful yet well-connected lifestyle.

Imagine!

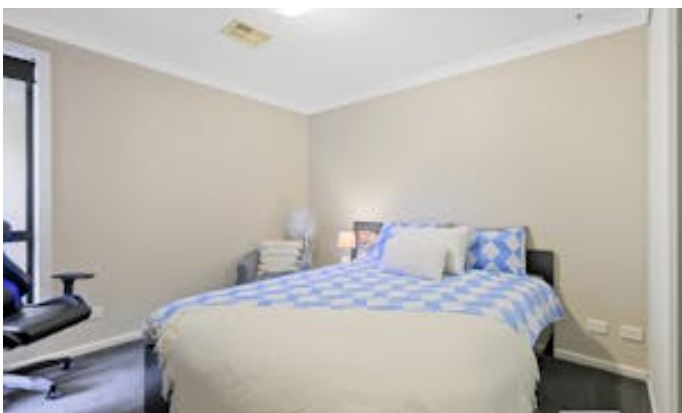
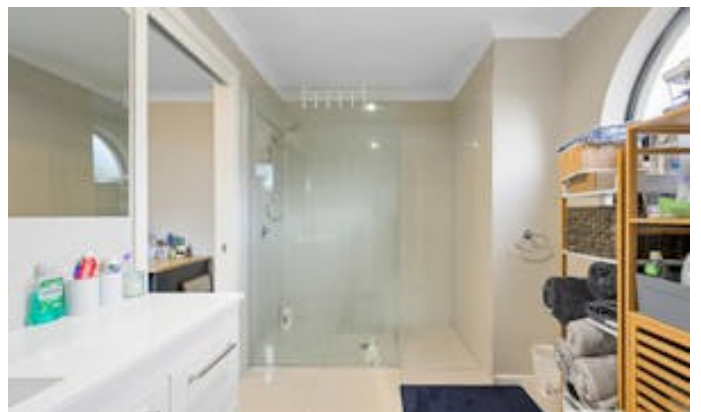
Morning coffees on the deck as the sun rises. Strolling to work at the nearby hospitals or walking the kids to top-rated schools. Hosting friends in a home designed for entertaining, with sunset views that will be the envy of every guest.

This is more than a home ### it's your opportunity to secure a premium coastal lifestyle in the heart of Park Grove.

DISCLAIMER: While Elders Real Estate Burnie has taken every care to verify the accuracy of the details in this advertisement, we cannot guarantee its correctness. Prospective buyers or tenants need to take such action as is necessary, to satisfy themselves of any pertinent matters

- Land Area 855.00 square metres
- Building Area: 220.00 square metres
- Bedrooms: 4
- Bathrooms: 2
- Double garage







[illegible]

Approx. Floor Area 260 sq m
(excluding deck)

All measurements are internal and approximate.
This plan is a sketch for illustration, not valuation.

