



20 Wentworth Place, GLEN EDEN, QLD 4680

ELEGANT FAMILY HOME IN GLEN EDEN – First Time to Market!!!!

Welcome to 20 Wentworth Place, GLEN EDEN

Set in a quiet cul-de-sac position in the highly sought-after Glen Eden area, this modern 4-bedroom, 2-bathroom home combines comfort, convenience, and lifestyle.

Perfect for families or investors, this property is offered to the market for the very first time.

AT A GLANCE:

Spacious Living: Large open-plan kitchen and dining area with air conditioning, designed for relaxed family living.

Separate Media/Family Room: Additional living space perfect for movie nights or a kids' retreat.

TYPE: For Sale

INTERNET ID: 300P182908

SALE DETAILS

**OFFERS OVER
\$649,000**

CONTACT DETAILS

Kylee Young
0428 673 350

Master Retreat: Generous master bedroom featuring a walk-in robe, ensuite, and air conditioning for year-round comfort.

Family Bedrooms: Three remaining bedrooms with built-ins and ceiling fans to keep everyone comfortable.

Outdoor Entertaining: Covered patio area overlooking the fully fenced yard â## great for entertaining and kids' play.

Practical Features: Double remote garage with serviceable sliding access from the side of the yard, gas hot water, and thoughtful design throughout.

Location Benefits: Positioned at the top right end of a quiet cul-de-sac in Glen Eden â## private, peaceful, and family-friendly.

Tenancy in Place: Currently tenanted until the end of November, making it an ideal investment or future family home.

Tenancy due to re-sign further 12 month lease at \$580 per week thereafter

Annual Rates around \$3600 per annum

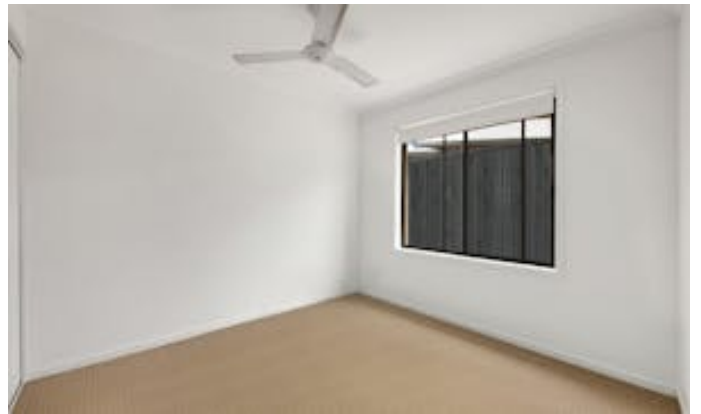
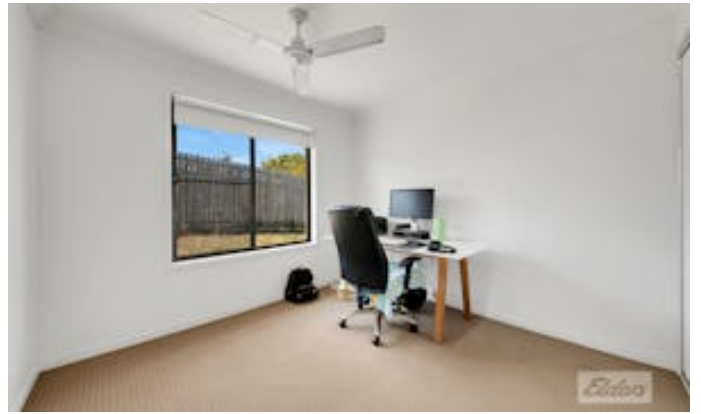
This is a rare opportunity to secure a prestige property in one of Glen Eden's most desirable pockets.

For a private viewing please contact KYLEE at ELDERS GLADSTONE AND TANNUM SANDS today

Other features: Carpeted

- Land Area 650.00 square metres
- Bedrooms: 4
- Bathrooms: 2
- Car Parks: 2
- Ensuite









FLOOR PLAN



FLOOR PLAN