



## 32 Hamilton Road, COLERAINE, VIC 3315

### Entry Level Home with Lovely Views

Situated in Coleraine opposite the Golf Course this rendered brick/stone home is set on a large block off a service road with views both front and rear.

The home comprises two large bedrooms, one with built in robes, a roomy lounge with gas heater and split system A/C, kitchen meals with breakfast bar, bathroom, laundry, front sunroom, rear mud room, two inside toilets, and one outside toilet.

The block is approximately 1,225sqm and has a lock-up double garage, a carport, older rear washhouse, concrete driveway, and a rainwater tank.

Coleraine is a small country town set in a scenic valley just 20 minutes from Hamilton, and boasts a hospital, grocery store, cafes, shops (including a chocolate shop), 2 hotels, sporting clubs, and an arboretum.

Contact Dion McFarlane on 0428 598 354 for an inspection.

#### Other features: Area Views

- Land Area 1,225.00 square metre

The particulars contained herein are supplied for information only and shall not be taken as a representation in any respect on the part of the vendor or its agent. Interested parties should contact the nominated person or office for full and current details.

**TYPE:** For Sale

**INTERNET ID:** 300P183232

#### SALE DETAILS

**\$180,000**

#### CONTACT DETAILS

**Hamilton**

89 Gray Street

Hamilton, VIC

03 5551 6600

**Dion McFarlane**

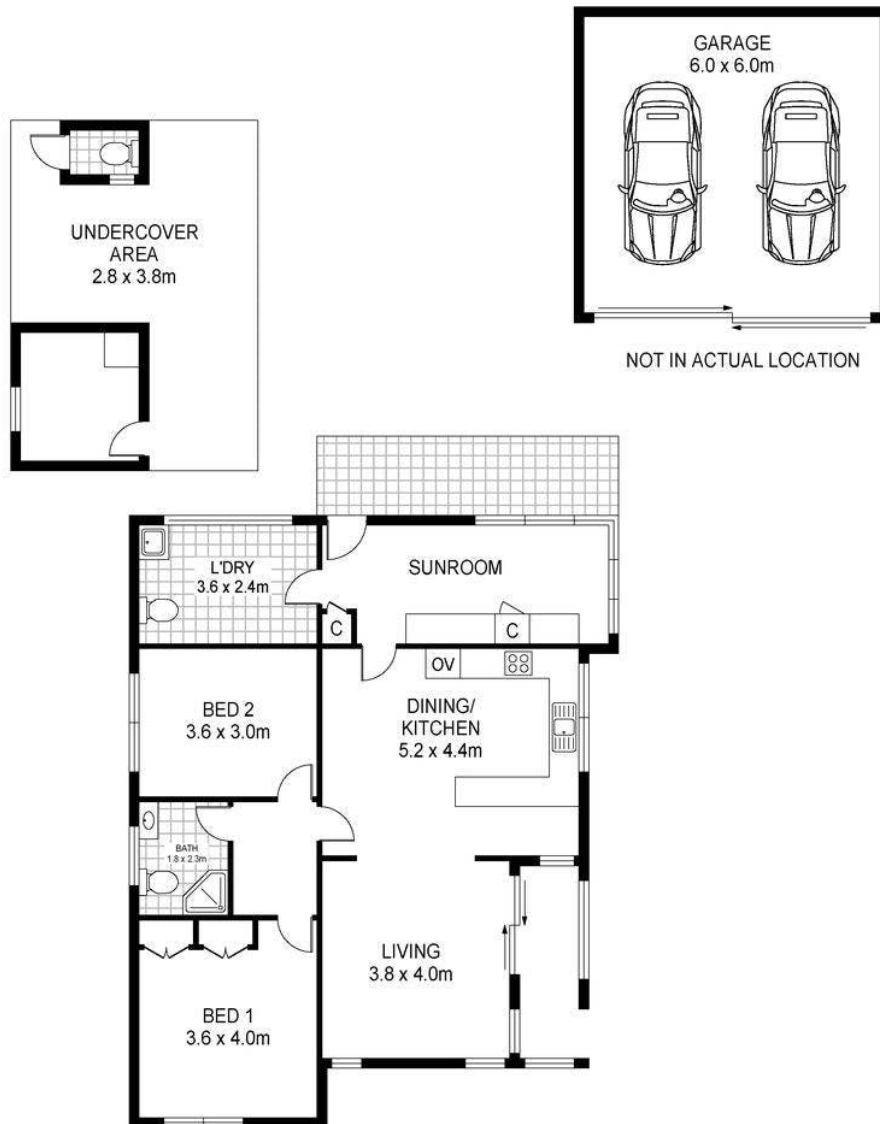
0428 598 354

- Bedrooms: 2
- Bathrooms: 1
- Double garage
- Single carport









32 Hamilton Road, Coleraine