



## 3148 Cavendish-Coleraine Road, COLERAINE, VIC 3315

Lifestyle Farm (46ac approx.) with Large home and Beautiful View

**18.67 hectares, 46.13 acres**

Situated 5 minutes from Coleraine on approximately 46 acres this lifestyle property is ideal for a family wanting to escape the hustle and bustle for the country life!

The substantial home has had a new extension with a naturally bright open plan living area, kitchen/dining, laundry, and bathroom all included, along with the original homestead comprising 4 bedrooms, central hallway, high ceilings, Victorian features, new roof, and solar electricity system.

The kitchen/dining has a breakfast bar, European style oven, dishwasher, appliance cupboard, pantry, and glass slider to a covered patio.

The huge lounge/living area has split system A/C, combustion wood heater, and a large window with valley views over the river.

There is also a sleepout that has been renovated with beautiful stained glass windows,

**TYPE:** For Sale

**INTERNET ID:** 300P183376

**SALE DETAILS**

**\$820,000**

**CONTACT DETAILS**

**Hamilton**

89 Gray Street

Hamilton, VIC

03 5551 6600

**Dion McFarlane**

0428 598 354

and ideal as a 5th bedroom or office.

The home has a ranch style veranda, and shedding includes, carport, garage, workshop, woolshed, and sundry shedding.

Bryan creek is spring fed and meanders through the property, lined with Red Gums, and providing water for stock all year round.

Ideally set up for grazing sheep, but a fantastic lifestyle property.

Inspections by appointment call Dion McFarlane on 0428 598 354.

- Land Area 18.67 hectares
- Bedrooms: 4
- Bathrooms: 1

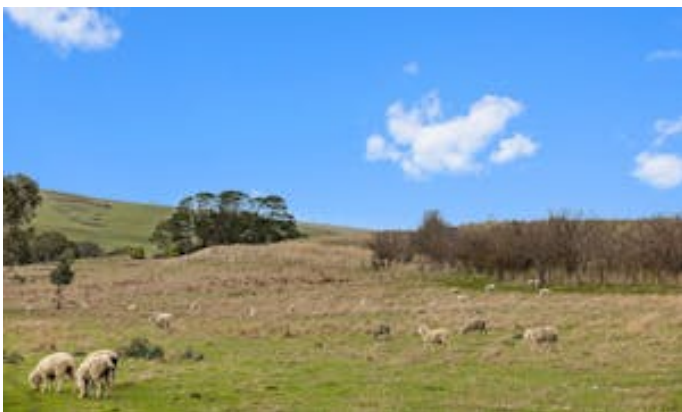
## HOMESTEAD

Bedrooms	4
Bathrooms	1

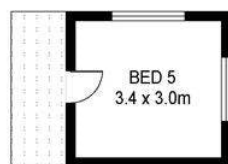
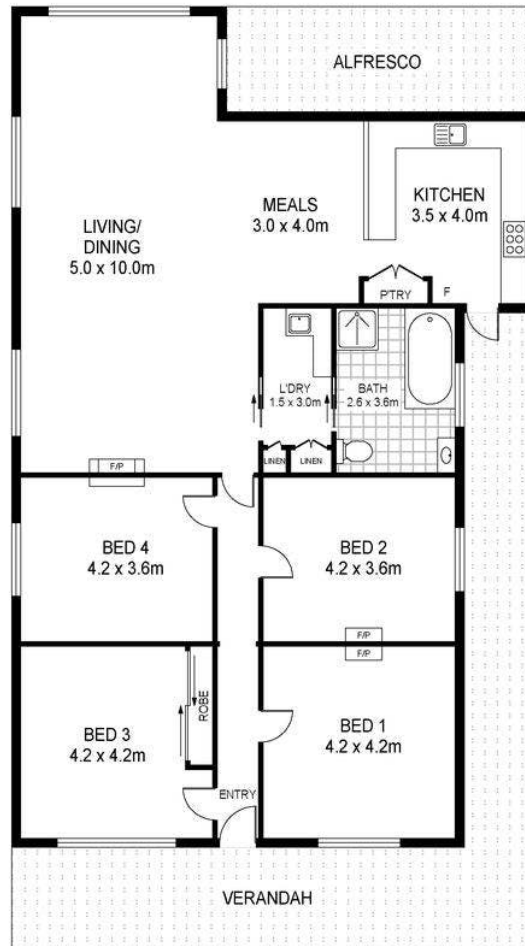












Scale in metres. Indicative only. Dimensions are approximate. All information contained herein is gathered from sources we believe to be reliable. However we cannot guarantee its accuracy and interested persons should rely on their own enquiries.

3148 Cavendish-Coleraine Road, Coleraine