



24 Reserve Drive, BOHLE PLAINS, QLD 4817

A masterclass in design, luxury, and liveability - welcome to 24 Reserve Drive, Bohle Plains.

Your New Home Awaits at 24 Reserve Drive, a Delightful 4 Bed - 2 Bath, 2 Car with Media Room - Family Home in the Reserve Estate, Bohle Plains, Where Space, Style & Serenity Come Together.

Positioned in the heart of Townsville's newest lifestyle estate, The Reserve, this exceptional residence delivers high-end finishes, functional design, and effortless comfort.

Built by award-winning local builder DJ Jones and completed in December 2022, this home is ready for immediate occupancy.

Listed by Stephen Lane | Elders Real Estate Townsville | 0488 022 067

Set on a fully fenced 609m² allotment with gate access and a powerful 10kW solar system, this property offers space, sustainability, and sophistication in equal measure.

Property Features:

TYPE: For Sale

INTERNET ID: 300P183481

SALE DETAILS

Offers Over \$749,000

CONTACT DETAILS

Stephen Lane
0488022067

- * Four spacious bedrooms, including a privately positioned master suite with wall-to-wall walk-in robe and luxurious ensuite featuring dual stone-top vanity and glass-free walk-in shower
- * Dedicated media room for immersive entertainment or quiet retreat
- * Gourmet kitchen with stone bench-tops, soft-close cabinetry, marble-look splash-back, and electric cooktop
- * Expansive butler's pantry with additional appliance space and storage
- * Light-filled open plan living and dining flowing seamlessly to the alfresco area
- * Family bathroom with separate shower, bathtub, and private vanity-perfect for busy mornings
- * Plush grey carpets and split-system air conditioning in all bedrooms and living spaces
- * Large laundry with ample bench space and oversized linen cupboard
- * Private outdoor entertaining area surrounded by landscaped gardens
- * Rear access to garage, ideal for storing the mower, or accessing the back yard
- * Energy-efficient 10kW solar system to reduce ongoing costs

Location Highlights:

- * Nestled in The Reserve, Bohle Plains' newest premier residential estate
- * Approx. 5 minutes to Willows Shopping Centre, Cannon Park Entertainment Precinct, and Reading Cinemas
- * Approx. 6 minutes to Riverway Lagoons and Arts Centre
- * Approx. 4-6 minutes to quality childcare, primary and secondary schools
- * Direct access to the Ring Road - placing James Cook University, Townsville University Hospital, and Lavarack Barracks within easy reach

Additional Information:

- * Land Size: 609m²
- * Rates: Approx. \$2750 per 6 months
- * Rental Appraisal: Approx. \$680pw - \$730pw

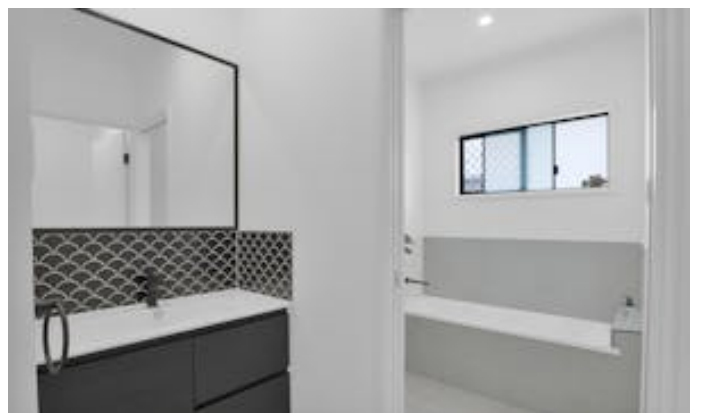
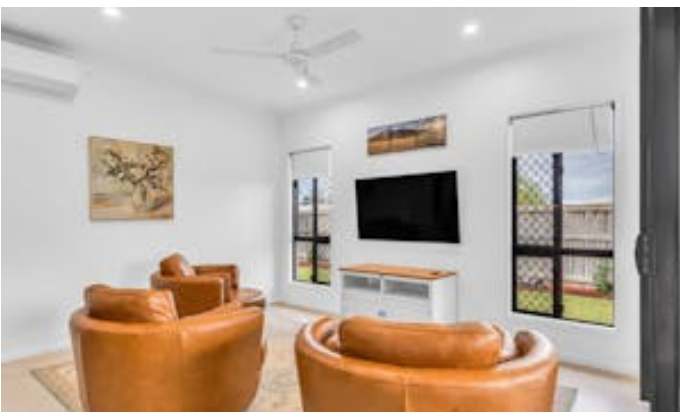
This is more than a home - it's a lifestyle statement. Whether you're upsizing, relocating, or investing, 24 Reserve Drive offers the perfect blend of style, space, and location.

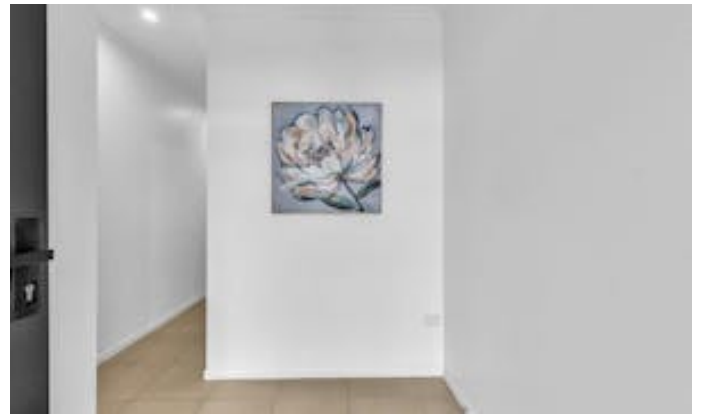
Contact: Stephen Lane Elders Real Estate Townsville

Other features: Carpeted, Close to Schools, Close to Shops, Close to Transport

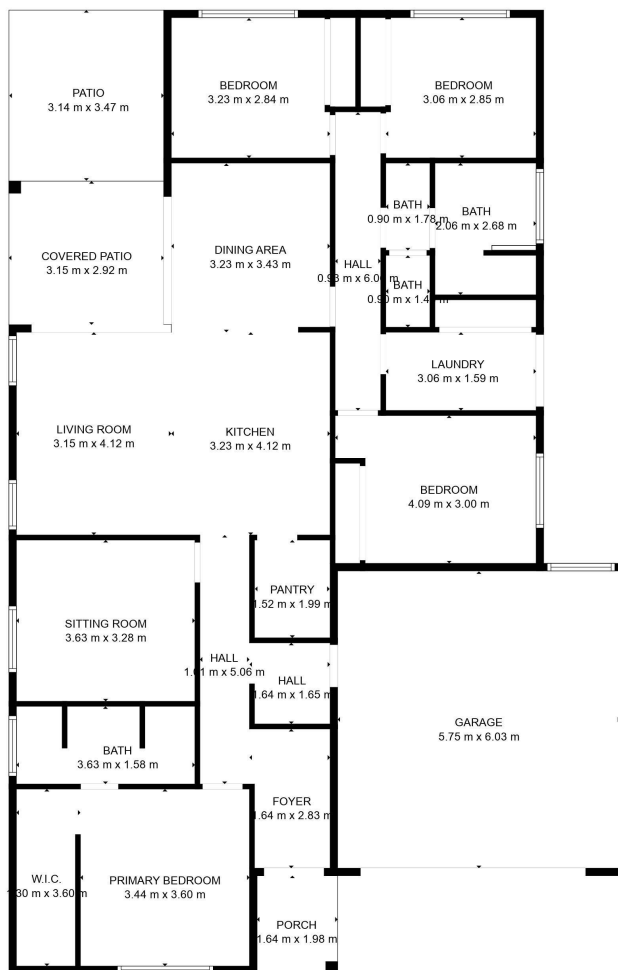
- Land Area 609.00 square metres
- Bedrooms: 4
- Bathrooms: 2
- Double garage
- Ensuite











TOTAL: 146 m²
FLOOR 1: 146 m²
**EXCLUDED AREAS: GARAGE: 35 m², PORCH: 3 m², PATIO: 11 m²,
 COVERED PATIO: 9 m²
 WALLS: 11 m²**

FLOOR PLAN CREATED BY CUBICASA APP. MEASUREMENTS DEEMED HIGHLY RELIABLE BUT NOT GUARANTEED.