



7 Chislett Court, MOUNT LOW, QLD 4818

Your new Home, Ready to move in before Christmas

Mount Low is a family-friendly suburb in Townsville's northern suburbs, offering a relaxed coastal lifestyle with everyday convenience. With amenities such as schools, shopping precinct's and Bushland Beach close by, this home offers lifestyle and convenience. Ideal for families wanting a move-in ready property.

The home has modern, spacious living with a separate theatre room.

Features:

- Tiled floors to open plan living
- Central kitchen with induction cook top, dishwasher and loads cupboards
- Fully air-conditioned
- 4 bedrooms, main with walk-in robe and ensuite
- Built-in robes to other bedrooms, carpet to floors
- Solar 6kw Inverter

TYPE: For Sale

INTERNET ID: 300P183498

SALE DETAILS

Offers over \$680,000

CONTACT DETAILS

John Millgate
0418 747 496

The particulars contained herein are supplied for information only and shall not be taken as a representation in any respect on the part of the vendor or its agent. Interested parties should contact the nominated person or office for full and current details.

- Set on 605 m2 with double gate side access to back yard
- Parklands and play area's close for kids

Location:

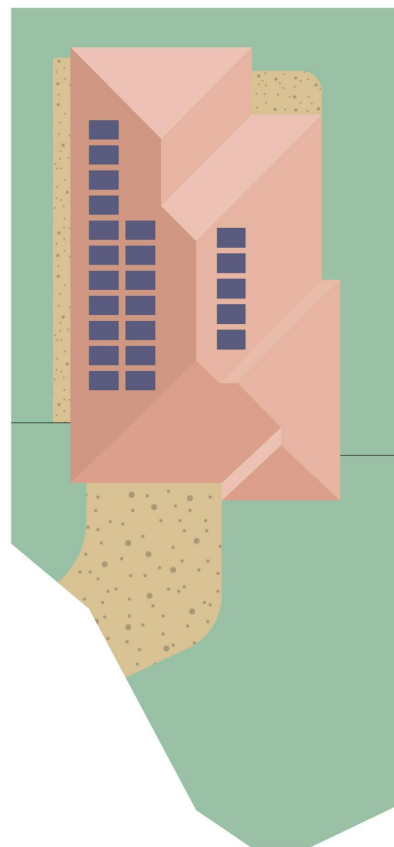
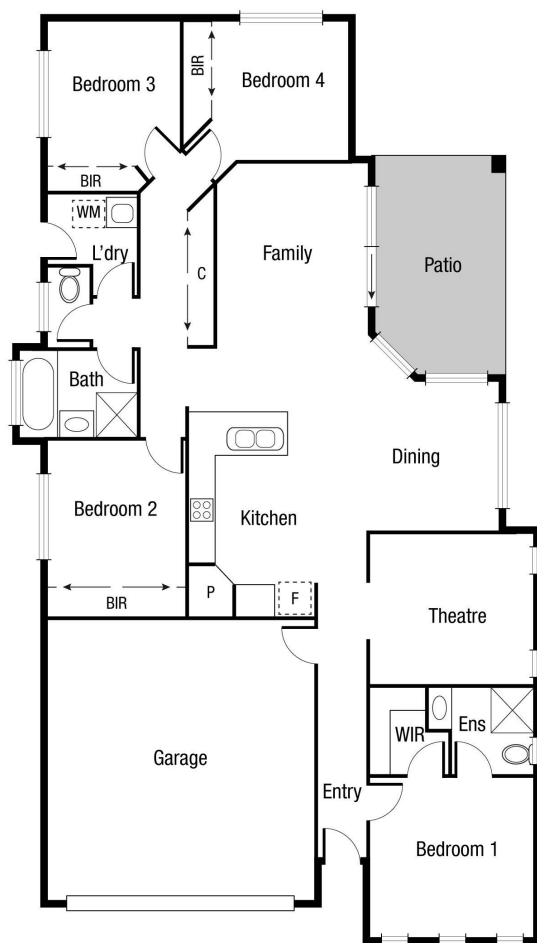
- North Shore Shopping precinct, including gym and Aquatic Centre -- approx 6kms
- Bushland Beach approx 8kms
- Townsville CBD approx 26kms
- Easy access to motorway allows quick access to JCU, Laverack Barracks and TSV university Hospital

Rates - \$4203 pa (approx)

Rent appraisal - \$680 - \$700 pw

- Land Area 605.00 square metres
- Building Area: 233.00 square metres
- Bedrooms: 4
- Bathrooms: 2
- Car Parks: 2





Scale in metres. Indicative only. Dimensions are approximate. All information contained herein is gathered from sources we believe to be reliable. However we cannot guarantee its accuracy and interested persons should rely on their own enquiries.

TOTAL AREA : 184.4 sq.m

7 Chislett Ct, Mount Low