



8 Oasis Drive, SHOREWELL PARK, TAS 7320

Stylish Modern Family Home with Space, Comfort, and Endless Possibilities

Welcome to 8 Oasis Drive â## a contemporary home that effortlessly combines modern style, practicality, and room to live, grow, and entertain. From the moment you step inside, this home exudes warmth, light, and a sense of effortless living, making it perfect for families, professionals, or savvy investors.

The property features three generous bedrooms, all with built-in robes, while the master suite is a private sanctuary complete with a walk-in robe and a luxurious ensuite, offering the perfect retreat at the end of the day. Two separate living areas provide the flexibility every family dreams of â## a relaxed lounge for cosy nights, a lively kidsâ## or media room, or even a home office or hobby space.

At the heart of the home, the open-plan kitchen, dining, and living area is bright, modern, and welcoming. The kitchen is designed for modern living with sleek finishes, plenty of storage, and space to prepare meals while staying connected with the rest of the family. Natural light streams in through large windows, creating an inviting atmosphere that flows effortlessly to the outdoors.

Step outside onto the undercover deck, an entertainerâ##s delight where you can host summer BBQs, enjoy a quiet coffee in the morning, or simply unwind while watching the

TYPE: For Sale

INTERNET ID: 300P183519

SALE DETAILS

\$660,000

CONTACT DETAILS

Elders Real Estate Burnie

72-74 Wilson Street
Burnie, TAS
03 6432 2311

Amy Davidson
0457 529 388

The particulars contained herein are supplied for information only and shall not be taken as a representation in any respect on the part of the vendor or its agent. Interested parties should contact the nominated person or office for full and current details.

kids play safely in the fully enclosed yard. The low-maintenance gardens ensure that weekends are spent enjoying life, not working on it.

A double garage offers secure parking and extra storage, while the overall layout and design make this home practical, versatile, and ready to meet the demands of modern family life. Whether it's hosting friends, enjoying family time, or simply relaxing in a bright, airy space, 8 Oasis Drive caters to every lifestyle.

With its modern features, dual living areas, outdoor entertaining space, and fully secure yard, this property is more than just a home – it's a lifestyle. Stylish, spacious, and thoughtfully designed, 8 Oasis Drive is ready to welcome its next family to create memories that last a lifetime. Call Amy Davidson today to arrange an inspection.

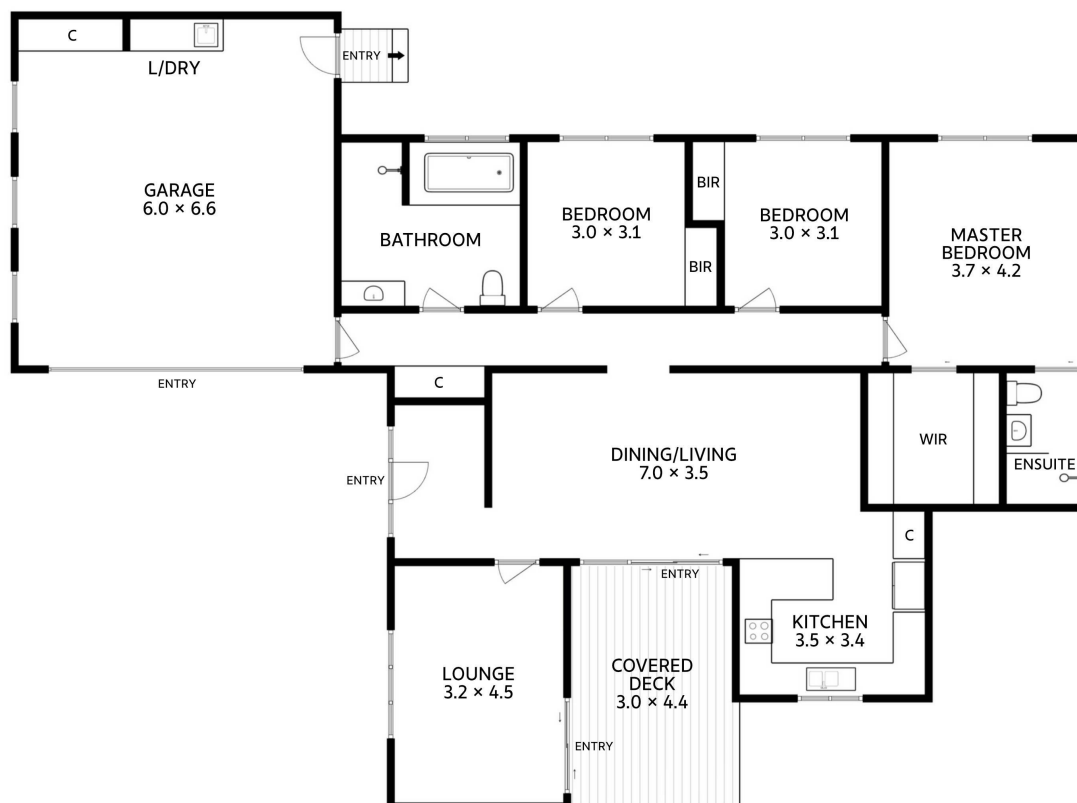
DISCLAIMER: While Elders Real Estate Burnie has taken every care to verify the accuracy of the details in this advertisement, we cannot guarantee its correctness. Prospective buyers or tenants need to take such action as is necessary, to satisfy themselves of any pertinent matters

- Land Area 768.00 square metres
- Building Area: 176.00 square metres
- Bedrooms: 3
- Bathrooms: 2
- Car Parks: 2
- Double garage









Approx. Floor Area 171 sq m
(excluding covered deck)

All measurements are internal and approximate.
This plan is a sketch for illustration, not valuation.

