



35 Maple Drive, ALSTONVILLE, NSW 2477

Spacious Family Home with Room to Grow

If you've been looking for a home with plenty of space for the whole family, then this could be the one for you. Set on a large 1,547m² block in a quiet, family-friendly street, this five-bedroom home offers loads of room to spread out â## inside and out.

With multiple living areas, a spacious main bedroom with ensuite, and a great layout for families with teenagers or dual-living potential, there's flexibility here to make it your own. The open-plan kitchen sits at the heart of the home and flows easily to both formal and casual living spaces, while outside you'll find a big backyard, a resort-style pool, and plenty of room for the kids (and pets!) to run around.

Key features include a large media room with a cosy wood heater, gas cooktop and dishwasher, split system air-conditioning, large family bathroom with a shower and bath, solar electricity and excellent storage solutions with garden sheds, mezzanine storage in the garage and additional concreted pad to easily park the caravan, boat or trailer.

With both primary and secondary schools nearby, this is the perfect opportunity to keep the family in town whilst also having the space to breathe. To find out more and to book your inspection, contact Troy and Jack from Elders Alstonville today.

The particulars contained herein are supplied for information only and shall not be taken as a representation in any respect on the part of the vendor or its agent. Interested parties should contact the nominated person or office for full and current details.

TYPE: For Sale

INTERNET ID: 300P183541

SALE DETAILS

\$990,000-\$1,050,000

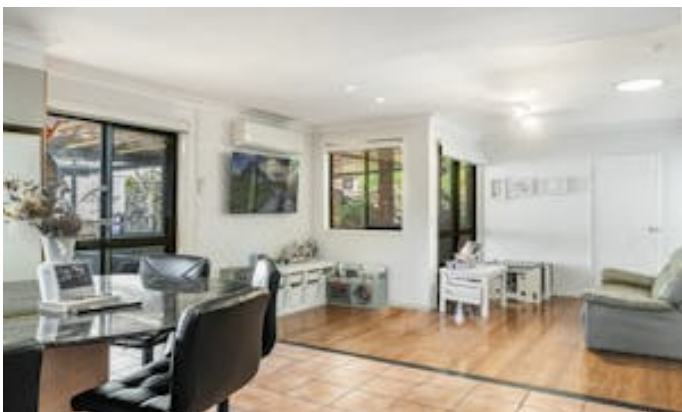
CONTACT DETAILS

**Elders Real Estate
Alstonville**

80 Main Street
Alstonville, NSW
(02) 6628 0000

Troy MacRae
0414 867 035

- Land Area 1,547.00 square metre
- Bedrooms: 5
- Bathrooms: 3
- Double garage







35 Maple Drive, Alstonville



INT : 214.2m²
 EXT : 69.30m²
 GARAGE : 38.4m²

Dimensions are approximate. All information contained herein gathered from sources we believe to be reliable. However we cannot guarantee its accuracy and interested persons should rely on their own enquiries. Single intended use purposes only, not to be duplicated © 2025 www.visionmedia.vision - 0411 444 223