



3 Uralia Terrace, NORTHAM, WA 6401

Elevated Character Home in Sought-After Location

Perched on an elevated site in a highly desirable address, this charming brick and iron residence is a rare find-combining timeless character with thoughtful modern updates.

Step through the side entry-a unique design that offers added privacy-and be welcomed by a wide hallway adorned with stunning stained glass windows.

The charm continues throughout with original features such as rich jarrah floorboards, French doors, and beautiful leadlight windows.

The home boasts three spacious bedrooms, including a front master suite that captures lovely natural light.

The remaining two bedrooms are generously sized and located in a private wing, alongside a fully renovated and stylish family bathroom.

At the heart of the home, you'll find a separate dining room with a warm, inviting feel, which flows through to a tastefully renovated kitchen-perfect for those who love to cook

The particulars contained herein are supplied for information only and shall not be taken as a representation in any respect on the part of the vendor or its agent. Interested parties should contact the nominated person or office for full and current details.

TYPE: For Sale

INTERNET ID: 300P183561

SALE DETAILS

Over \$549,000

CONTACT DETAILS

**Elders Real Estate,
Northam**

15 Peel Terrace
NORTHAM, WA
08 9622 6000

Sharon Johnson
0418 958 651

and entertain.

Outside, enjoy wide front and side verandahs ideal for morning coffee or relaxing afternoons, all while taking in the elevated outlook.

A large rear laundry with ample space for storage completes this wonderfully functional and beautifully presented home.

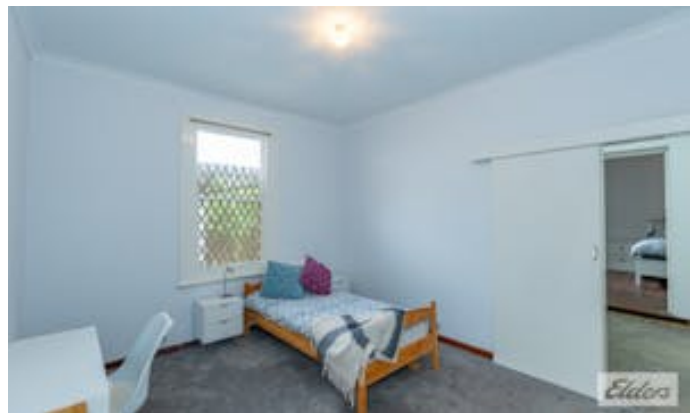
Don't miss the opportunity to secure a piece of history in a prime position-character, space and location all in one.

All inquiries to exclusive selling agents Elders Real Estate

Sharon Johnson | 0418 958 651 | Sharon.Johnson@elders.com.au

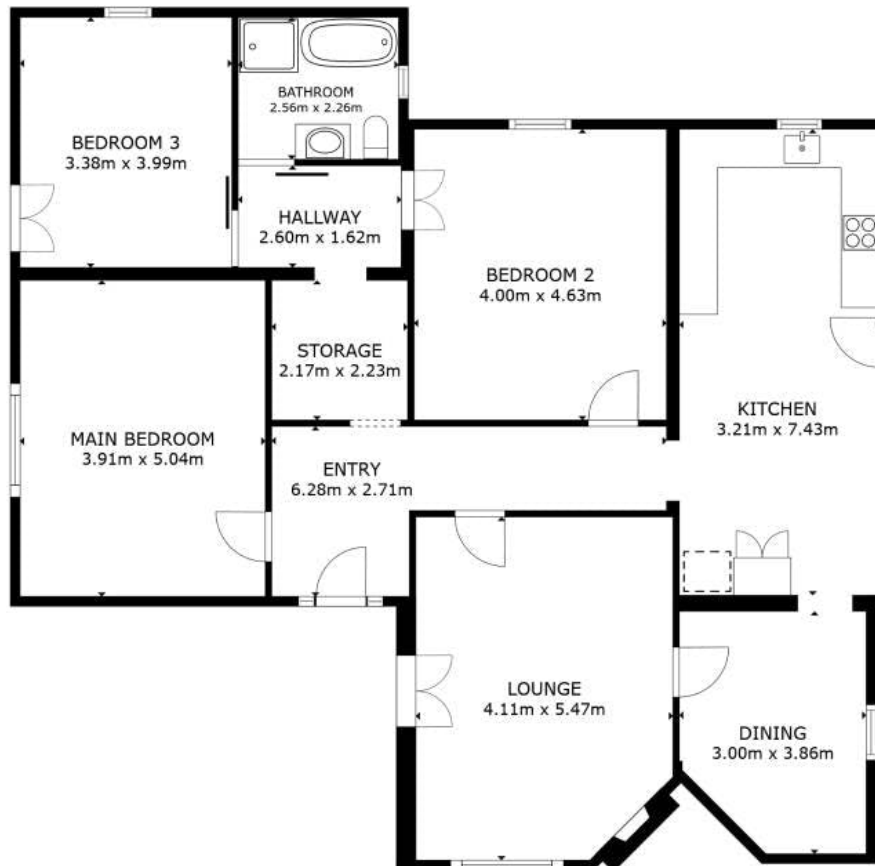
- Land Area 936.00 square metres
- Bedrooms: 3
- Bathrooms: 1
- Car Parks: 2
- Single carport











FLOOR PLAN

GROSS INTERNAL AREA
FLOOR PLAN 140.6 m²
TOTAL : 140.6 m²

SIZES AND DIMENSIONS ARE APPROXIMATE, ACTUAL MAY VARY.