

3/4 Barry Drive, FINDON, SA 5023

Brand New Townhouse in the Heart of Findon – Modern Living Awaits!

Welcome to your brand new, never-lived-in Rivergum townhouse – a perfect fusion of style, functionality, and effortless convenience. Completed in 2025 and set in the ever-popular suburb of Findon, this stylish two-bedroom home is the ultimate low-maintenance lifestyle opportunity or savvy investment.

Step inside and be greeted by high-quality finishes and a thoughtful layout designed for modern living:

- Mirrored built-in robes with both hanging and cupboard storage in both bedrooms
- Sleek stone-top kitchen featuring gas cooktop and dishwasher
- Zoned ducted reverse cycle air conditioning for year-round comfort
- Alarm system and keyless entry for peace of mind
- Instant gas hot water system
- European-style laundry tucked away for convenience
- 6-Star Energy Efficiency

The particulars contained herein are supplied for information only and shall not be taken as a representation in any respect on the part of the vendor or its agent. Interested parties should contact the nominated person or office for full and current details.

TYPE: For Sale

INTERNET ID: 300P183563

SALE DETAILS

\$705,000 - \$740,000

CONTACT DETAILS

Barossa
127 Murray Street
Tanunda, SA
(08) 8562 2883
RLA: 62833

Nicola Biagi
0424 975 413

Whether you're a first home buyer, investor, student, FIFO worker or professional couple, this home ticks every box. Just move in and start enjoying or rent it out and reap the rewards! Possible for eligible first home buyers to take advantage of government grants and stamp duty concessions, with this brand new, never-occupied property meeting key criteria. (Subject to individual eligibility and government conditions.)

Location Highlights:

- Minutes to Findon Shopping Centre and local cafes
- Easy access to public transport and Adelaide CBD
- Close to quality schools, parks, and the beach

Modern, energy-efficient, and beautifully appointed this is contemporary townhouse living at its best.

Disclaimer:

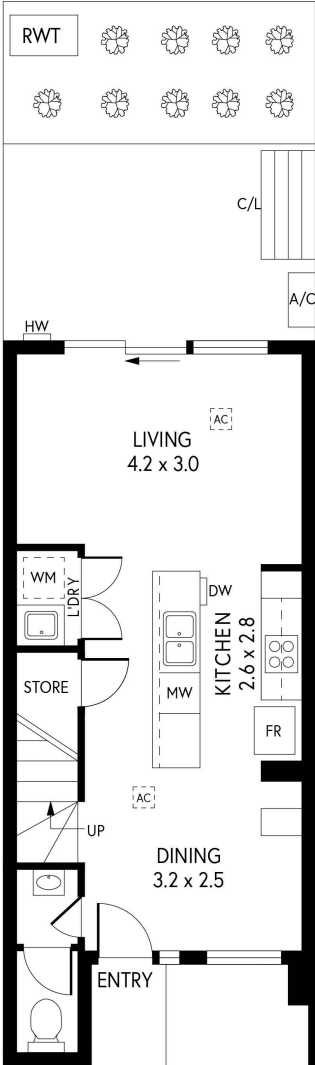
We have in preparing this information used our best endeavours to ensure that the information contained herein is true and accurate but accept no responsibility and disclaim all liability in respect of any errors, omissions, inaccuracies, or misstatements that may occur. Prospective purchasers should make their own enquiries to verify the information contained herein. Elders Real Estate RLA62833

Other features: Car Parking - Surface, Close to Schools, Close to Shops, Close to Transport

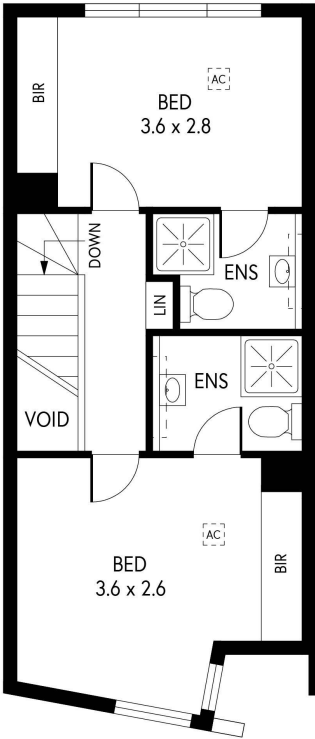
- Land Area 86.00 square metres
- Building Area: 102.00 square metres
- Bedrooms: 2
- Bathrooms: 2
- Single carport
- Ensuite







GROUND FLOOR



FIRST FLOOR

3/4 BARRY DRIVE, FINDON

INTERNAL - 91.15 SQM
EXTERNAL - 18.14 SQM
TOTAL - 109.29 SQM

