

51 Peter Thomson Circuit, YARRAWONGA, VIC 3730

Spacious Three-Bedroom Home in Silverwoods Golfing Estate.

Located in the prestigious Silverwoods Estate, this expansive three-bedroom residence offers the ultimate blend of comfort, style, and convenience. Perfectly positioned just moments from the Sebel Resort, Lake Mulwala, the pro shop, and a host of local amenities, this home presents an exceptional lifestyle opportunity.

Step inside to discover a modern kitchen featuring stone benchtops and butler's pantry, seamlessly flowing into a generous open-plan dining and living area. A Second living space offers added flexibility ideal for families or those who love to entertain.

The home also includes a dedicated study, perfect for working from home, and an inviting alfresco area for outdoor dining. Year-round comfort is assured with ducted evaporative cooling, ducted natural gas heating, a split system air conditioner, and a cosy gas log fire.

Additional features include an oversized garden shed, ample space for an in-ground pool (STCA), and a thoughtfully designed layout to suit both relaxed living and entertaining.

Whether you're looking for a permanent residence, a holiday home, or a smart investment, this property ticks all the boxes.

TYPE: For Sale

INTERNET ID: 300P183594

SALE DETAILS

\$689,500

CONTACT DETAILS

**Elders Real Estate
Yarrawonga**

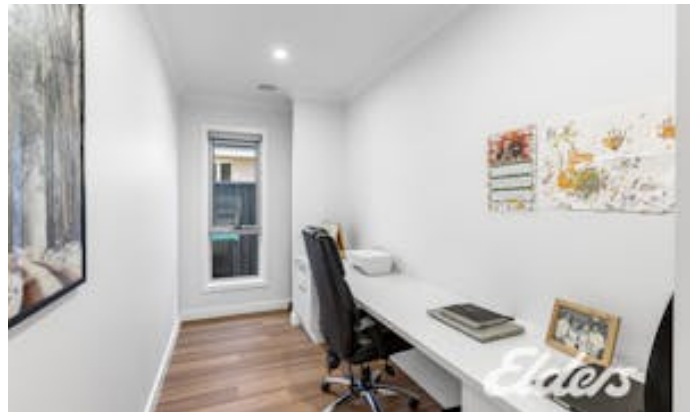
48 Belmore Street
Yarrawonga, VIC
03 5743 9500

Xavier Leslie
0409 324 037

Other features: Carpeted, Exhaust, Golf Course Estate, Heating, Openable Windows, Roller Door Access

- Land Area 576.00 square metres
- Bedrooms: 3
- Bathrooms: 2
- Double garage
- Ensuite





51 Peter Thomson Circuit, Yarrawonga

Elders



N

THE ABOVE PLAN IS AN ARTIST'S IMPRESSION ONLY, IT INCLUDES ELEMENTS THAT ARE FOR DISPLAY PURPOSES ONLY AND MAY NOT BE TO SCALE.
LANDSCAPING SHOWN IS INDICATIVE ONLY. DIMENSIONS ARE APPROXIMATE.