



16 Paxton Terrace, BURRA, SA 5417

Charming C1870 Settlers Cottage in Historic Burra

Step back in time and enjoy the timeless charm of this beautifully maintained c1870 Settlers Cottage, located in the heart of the heritage township of Burra. Just a short stroll to Market Square and the tranquil Burra Creek, this character-filled home offers both history and comfort in a picturesque setting.

Key Features:

- Two Generous Bedrooms â## The master includes a ceiling fan and reverse cycle air conditioning for year-round comfort.
- Inviting Lounge Room â## Welcoming you at the front of the home, complete with a ceiling fan.
- Central Living/Dining Area â## A versatile space ideal for family living or entertaining.
- Spacious Country Kitchen â## Dine-in style with ample room and a cozy wood heater.
- Functional Bathroom/Laundry â## Features a combined bath/shower, vanity, toilet, and integrated laundry.
- Rear Undercover Entertaining Area â## Perfect for relaxed outdoor living.

TYPE: For Sale

INTERNET ID: 300P183637

SALE DETAILS

\$335,000

CONTACT DETAILS

Elders Real Estate Clare Valley / Burra

230 Main North Road
Clare, SA
08 8842 9300

Julie Gabe
0438 836 508

- Ample Shedding â## Includes a selection of sheds and workshops, plus a garage and carport.
- Secure and Private â## Fully fenced yard on a generous 1,020sqm (approx.) block.

This delightful cottage combines the character of yesteryear with the conveniences of modern living-ideal as a permanent residence, country escape, or investment in one of South Australia's most treasured heritage towns.

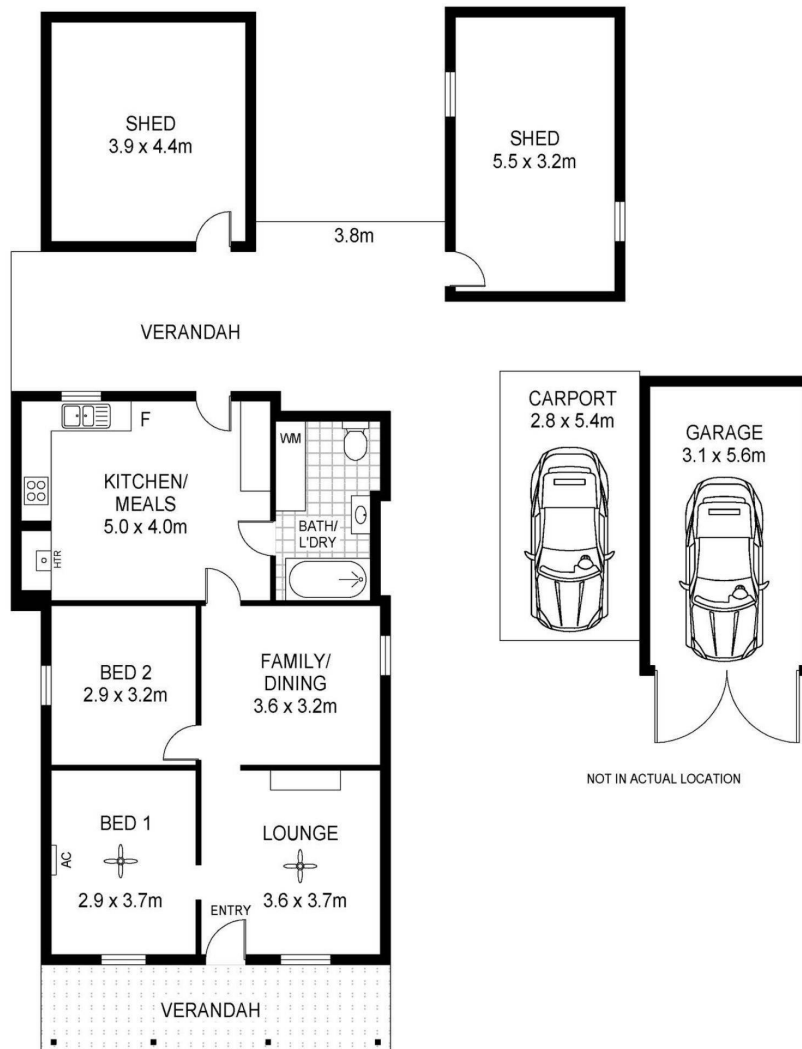
- Land Area 1,021.00 square metre
- Bedrooms: 2
- Bathrooms: 1
- Double garage
- Double carport











Scale in metres. Indicative only. Dimensions are approximate. All information contained herein is gathered from sources we believe to be reliable. However we cannot guarantee its accuracy and interested persons should rely on their own enquiries

INT : 79m²
GARAGE : 17m²
SHED : 35m²
CARPORT : 15m²

16 Paxton Terrace, Burra