

15 Roy Street, HARVEY, WA 6220

COUNTRY CHARM CLOSE TO TOWN

Set on an expansive 1,113sqm* block, this delightful 3-bedroom, 1-bathroom home offers the perfect blend of space, comfort, and lifestyle in a peaceful country setting - all just a short drive to town conveniences.

Step inside to find a well-designed layout featuring a spacious kitchen area, a separate living room for relaxation, plus an additional activity room ideal for a playroom or hobby space. Comfort is assured year-round with a split system air conditioner and ceiling fan in the living room, and a ceiling fan in the master bedroom.

Enjoy outdoor living all year round under the large alfresco area, complete with a ceiling fan â## perfect for entertaining family and friends. The backyard offers plenty of room for kids and pets to play, with a garden shed for extra storage.

Property features include:

- 2 good-sized bedrooms, 1 smaller bedroom, 1 bathroom

TYPE: For Sale

INTERNET ID: 300P183777

SALE DETAILS

Offers Over \$579,000

CONTACT DETAILS

Bunbury
11 Stirling Street
Bunbury, WA

Anthony (skip) Schirripa
0417 292 923

- Open kitchen
- Separate living room plus activity room
- Split system air conditioner & ceiling fan in living room
- Ceiling fan in master bedroom
- Large alfresco entertaining space with ceiling fan
- Garden shed
- 1 single carport & 1 enclosed single garage
- Outdoor Shower
- Generous 1,113sqm* block

Location highlights:

- Short drive to the main street, shops, caf  s, and local amenities
- Close to schools and sporting facilities
- 40-minute* drive to Bunbury and pristine beaches
- 15-minute* drive to Logue Brook Dam â   perfect for boating, swimming, and picnics

Whether you're looking for a family home with room to grow or a peaceful retreat with everything close by, this property delivers country charm with the convenience of town living.

Land rates: \$1984.00*

Water rates: \$1603.19*

Built: 1940

Zoning: R15-50

Buyers Note: All measurements/dollar amounts are approximate only and generally marked with an * (Asterix) for reference. Boundaries marked on images are a guideline and are for visual purposes only. Buyers should complete their own due diligence, including a visual inspection before entering into an offer and should not rely on the photos or text in this advertising in making a purchasing decision.

- Land Area 1,113.00 square metre
- Bedrooms: 3
- Bathrooms: 1

The particulars contained herein are supplied for information only and shall not be taken as a representation in any respect on the part of the vendor or its agent. Interested parties should contact the nominated person or office for full and current details.

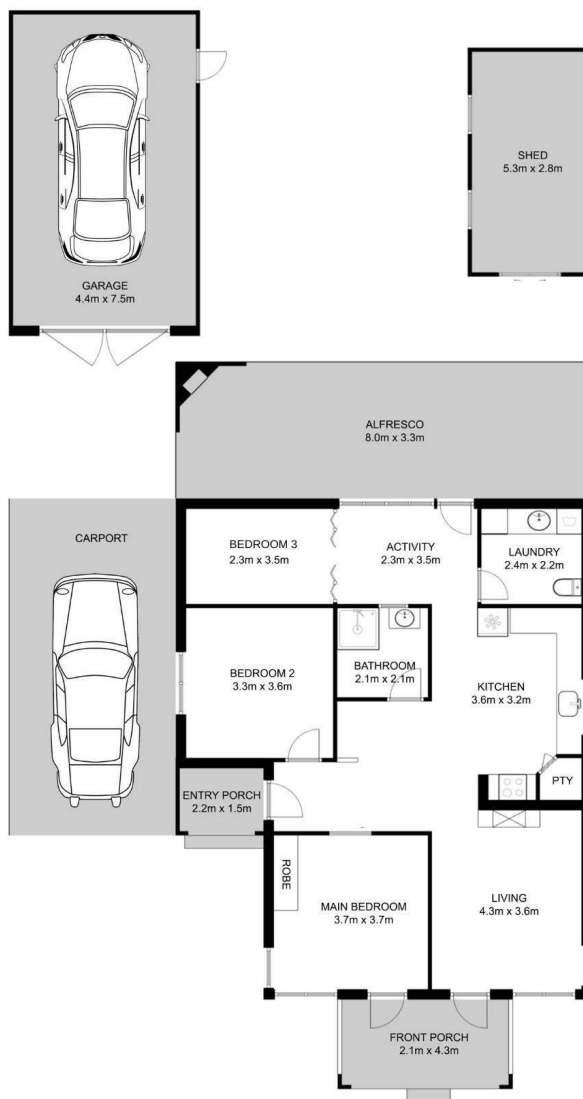
- Car Parks: 1
- Single garage







15 Roy Street, Harvey



This floor plan including furniture, fixture measurements and dimensions are approximate and for illustrative purposes only.
 Marques Photography gives no guarantee, warranty or representation as to the accuracy and layout.
 All enquiries must be directed to the agent, vendor or party representing this floor plan.