

## 6 Aitken Street, MILLICENT, SA 5280

### Solid Limestone Home on a Generous Allotment in a Prime Location

Set on an expansive 1128m<sup>2</sup> allotment, this solid limestone residence, built in 1947, offers timeless charm with modern touches and plenty of space for the growing family.

Located in a highly sought-after area, the home is freshly painted and move-in ready, with scope to personalise further if desired.

Privacy is assured with established trees and shrubs shielding the home from the street, while a front timber-decked porch offers a warm welcome. Inside, a wide hallway with laminate plank flooring flows through to the spacious lounge, dining, and kitchen areas.

The lounge features stunning decorative ceilings and cornices, a slow combustion wood heater, and reverse cycle air conditioning for year-round comfort. Double glass doors connect the lounge to the dining area, which can easily convert into a fourth bedroom if needed.

At the heart of the home is a large retro-style kitchen with ample cabinetry, electric cooking, and plenty of room for family meals.

The particulars contained herein are supplied for information only and shall not be taken as a representation in any respect on the part of the vendor or its agent. Interested parties should contact the nominated person or office for full and current details.

**TYPE:** For Sale

**INTERNET ID:** 300P183899

#### SALE DETAILS

**\$460,000**

#### CONTACT DETAILS

**Millicent**

Cnr Glen St and Railway  
Tce  
Millicent, SA  
08 8735 5800  
RLA: 62833

**Kerry Smith**

0419 803 836

There are three generously sized bedrooms, all complete with built-in robes, ceiling fans, and blinds. The renovated bathroom includes a shower over bath, vanity, and toilet.

The spacious laundry offers a second toilet and connects to the enormous fully enclosed entertaining room-a perfect all-season space featuring a second kitchen, extensive cabinetry, and beautiful timber doors that open to both the carport and the generous backyard.

The secure full-length carport with automatic roller door provides undercover access to the entertaining area and leads to a stone single garage. The backyard also includes a garden shed and offers plenty of space for kids and pets to enjoy.

Conveniently located within walking distance to local amenities, this home is a fantastic opportunity for families, investors, or anyone looking for character, comfort, and space.

Contact Kerry today to arrange your inspection or for more information.

Other features: Close to Schools, Close to Shops

- Land Area 1,128.00 square metre
- Bedrooms: 3
- Bathrooms: 1
- Single garage
- Double carport



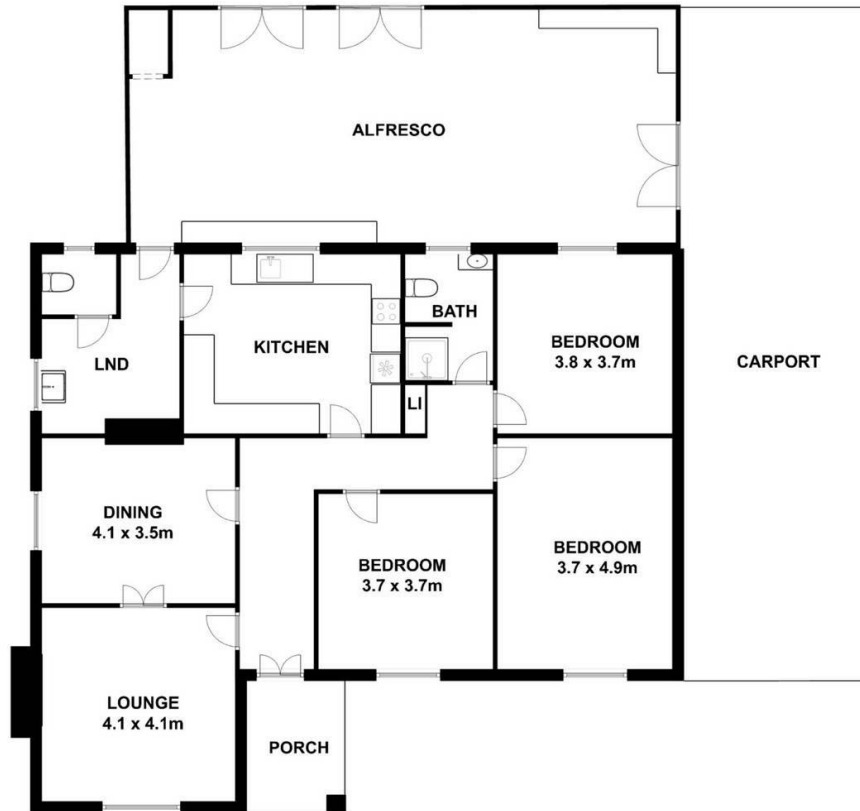








6 Aitkens Street  
MILLICENT



Living : 130 SQ.M  
Pergola : 58 SQ.M  
Carport: 60 SQ.M  
Porch : 9 SQ.M

TOTAL AREA : 257 SQ.M

This drawing is for illustration purpose only. All measurements are approximate only and information intended to be relied upon should be independently verified.