



29 Thomas Road, ROCKY CAMP, SA 5280

Quality Niche Home Build on 5 Acres - Just 8km from Millicent

Welcome to this beautiful quality-built brick home at 29 Thomas Road, Rocky Camp. Proudly constructed by Niche Homes in November 2023, this home is nestled on the hilltop of this picturesque 5-acre allotment. This near-new lifestyle property offers the perfect blend of modern living and peaceful rural surrounds â## all within easy reach of Millicent (8km).

From its high-quality finishes to the abundance of natural light, every detail of this light and spacious home has been thoughtfully designed for relaxed living.

Step inside the front door to find a large entrance and hallway with durable vinyl plank flooring that flows seamlessly through to the roomy open-plan living, kitchen, and dining area-the true heart of the home and a perfect gathering space for family and friends.

The modern kitchen boasts a 900mm wide island bench, 900mm electric oven with 5-burner gas cooktop, double sink, under-bench dishwasher, and a generous walk-in pantry-ideal for the home chef. Enjoy cozy winter evenings with a slow combustion wood heater and make the most of indoor-outdoor living with glass double sliding doors leading to the covered alfresco area.

TYPE: For Sale

INTERNET ID: 300P183903

SALE DETAILS

\$750,000

CONTACT DETAILS

Millicent

Cnr Glen St and Railway
Tce
Millicent, SA
08 8735 5800
RLA: 62833

Kerry Smith
0419 803 836

This home offers 3 carpeted bedrooms, including a master suite with a walk-in robe and ensuite featuring a toilet, shower, and wall hung vanity. A versatile second living area can serve as a media room, playroom, or a spacious 4th bedroom, depending on your needs.

The main bathroom includes a deep soaking bath and separate shower, with a powder room and separate toilet providing added convenience.

The spacious laundry is well-equipped with under-bench utilities, ample built-in storage, and a mudroom with garden access-perfect for busy households.

Other standout features include:

- Double garage under the main roof with automatic roller door, internal access, and rear yard access
- 2 x 22,500-gallon rainwater tanks with a switchable bore water option
- Large, fully fenced dog run
- Plenty of outdoor space to add additional shedding or garden

This thoughtfully designed home combines comfort, functionality - all in a peaceful, spacious setting. Don't miss this opportunity to make it yours!

- Land Area 5 acres
- Bedrooms: 3
- Bathrooms: 2
- Double garage

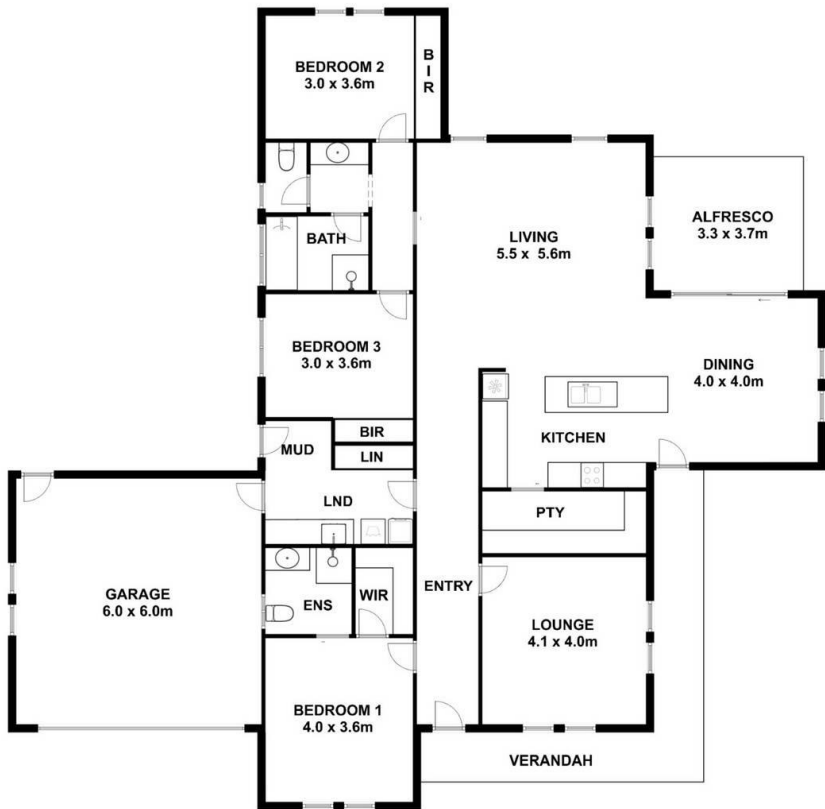








29 Thomas Rd,
MILLICENT



Living : 206 SQM
Verandah : 16 SQM
Alfresco : 12 SQM

TOTAL AREA : 234 SQM

This drawing is for illustration purpose only. All measurements are approximate only and information intended to be relied upon should be independently verified.