



## 19 Windsor Drive, HAMILTON, VIC 3300

### Ultimate Family or Retirement Living in a Prime Location

Tucked away in a quiet court surrounded by quality homes and just minutes from Lake Hamilton, schools, and medical facilities, this substantial four-bedroom residence offers an exceptional lifestyle on a generous 1,130m<sup>2</sup> (approx.) allotment. Perfectly designed for families or retirees seeking space, comfort, and versatility, this home delivers on every level.

Designed for easy living, the home features three generous living areas for effortless living and entertaining. The formal sunken lounge and dining area offers a peaceful garden outlook creating a refined space for gatherings. The heart of the home is the open-plan kitchen, dining, and family room, featuring a deep island bench with storage on both sides, a breakfast nook, and ample preparation space. Beyond, a third living room sits behind double glass doors, an ideal space for a kids' playroom or teenage retreat with direct outdoor access.

The master suite, positioned at the front of the home, is complete with a walk-in robe and ensuite with shower, vanity, and toilet. Three additional bedrooms, two generously sized, are fitted with built-in robes and are conveniently located near the family bathroom, which includes a bath, shower, and vanity, alongside a separate toilet. While a designated office adjacent to the kitchen provides additional space for versatility, perfect for a study, or work from-home arrangements.

The particulars contained herein are supplied for information only and shall not be taken as a representation in any respect on the part of the vendor or its agent. Interested parties should contact the nominated person or office for full and current details.

**TYPE:** For Sale

**INTERNET ID:** 300P183938

#### SALE DETAILS

**\$775,000**

#### CONTACT DETAILS

**Hamilton**

89 Gray Street  
Hamilton, VIC  
03 5551 6600

**Jo Frost**

0428 585 434

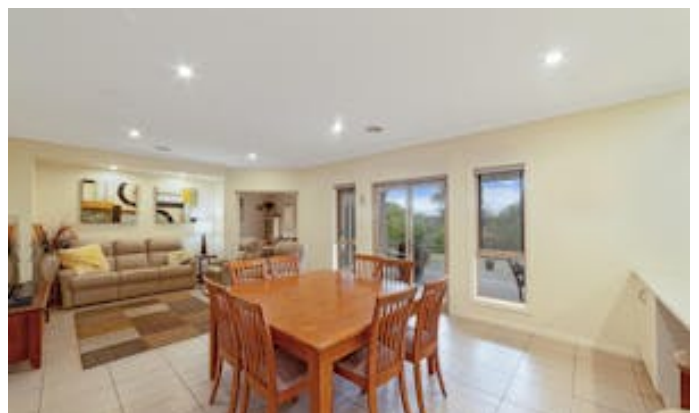
Outdoors, enjoy a secure backyard with established hedging, trees and roses, while an undercover entertaining area provides a private space to enjoy the garden. A 4.5m x 6.2m Colorbond shed with roller door and PA access provides excellent storage, in addition to the double garage with internal access to the home.

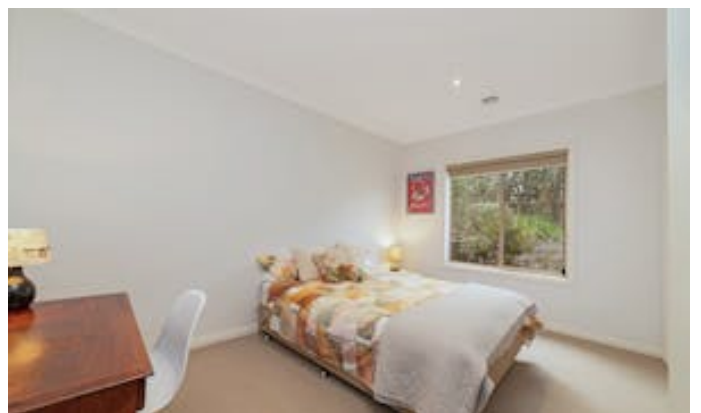
This beautifully presented home offers a rare combination of space, comfort, and versatility in a peaceful, family-friendly court. Whether you're raising a growing family, welcoming grandchildren, or seeking a relaxed retirement retreat, this property ticks all the boxes. Don't miss the chance to secure a quality home in a prime location close to everything.

Other features: Carpeted, Close to Schools, Close to Transport, Roller Door Access

- Land Area 1,130.00 square metre
- Bedrooms: 4
- Bathrooms: 2
- Double garage
- Ensuite

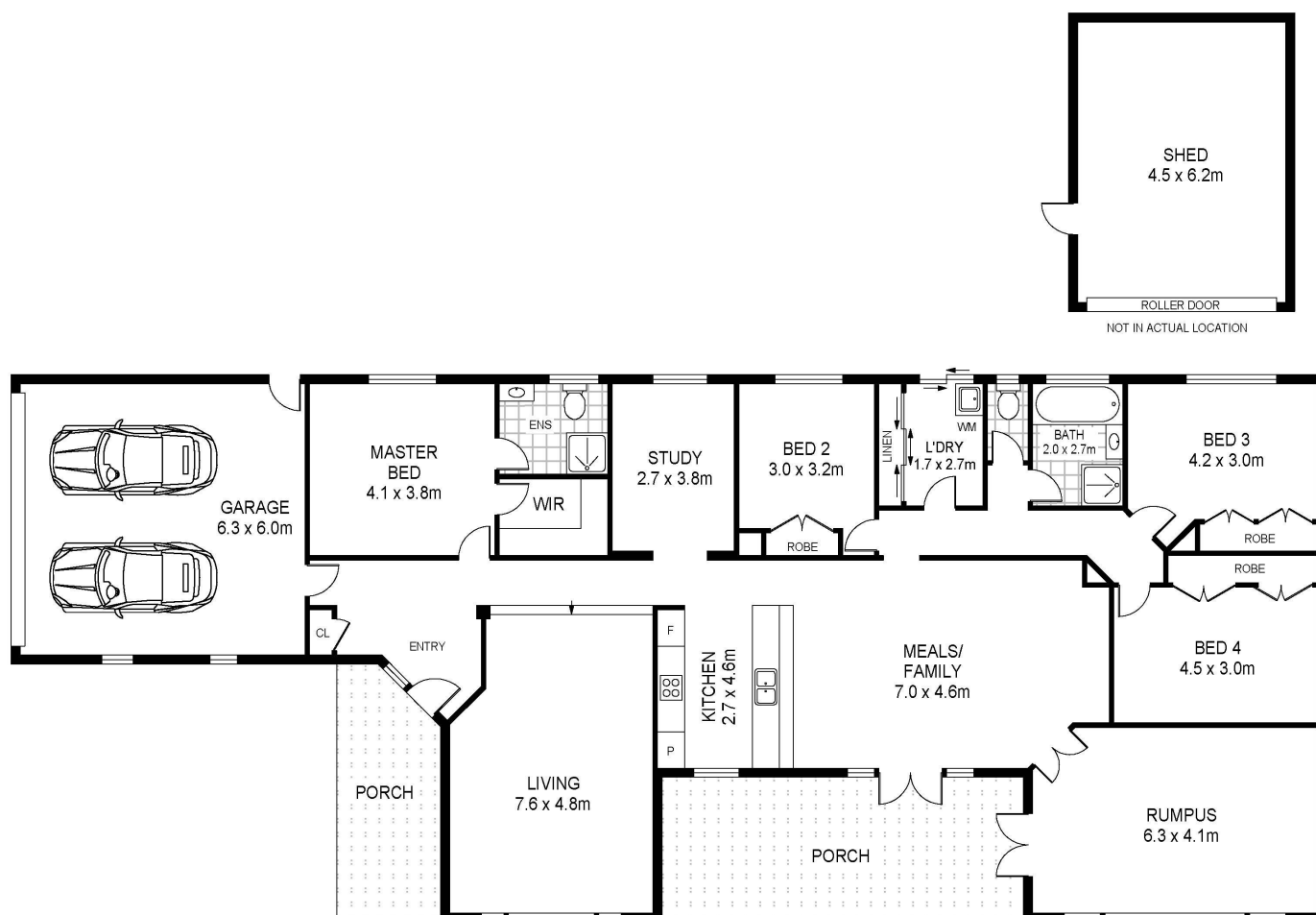












Scale in metres Indicative only. Dimensions are approximate. All information contained herein is gathered from sources we believe to be reliable. However we cannot guarantee its accuracy and interested persons should rely on their own enquiries

19 Windsor Drive, Hamilton