



5 Hewett Court, HAMILTON, VIC 3300

Priced Just Right!

Nestled in a quiet cul-de-sac with more than meets the eye, this classic brick veneer home offers smart entry level in the Hamilton market. With three bedrooms, an updated bathroom and concrete stumps, it's ideal for first home-owners, small families or investors.

This little beauty has got it all - semi-modern laminate kitchen/dining with RC/AC, gas cooktop with electric underbench oven, built-in pantry; lounge room with gas heating and near new floorcoverings throughout.

Outdoors is not to be deceived either, with a one car carport, garden shed and enough room to put a shed (STCA), all on a 588m2 easy to maintain block within walking distance to St Mary's & Monivae College.

Take a look at this one today!

Other features: Close to Schools, Close to Transport

- Land Area 588.00 square metres
- Bedrooms: 3
- Bathrooms: 1
- Single carport

TYPE: Under Contract

INTERNET ID: 300P183944

SALE DETAILS

\$359,000

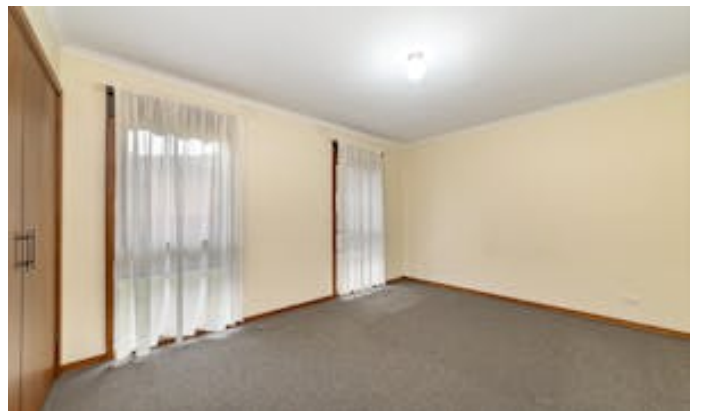
CONTACT DETAILS

Hamilton

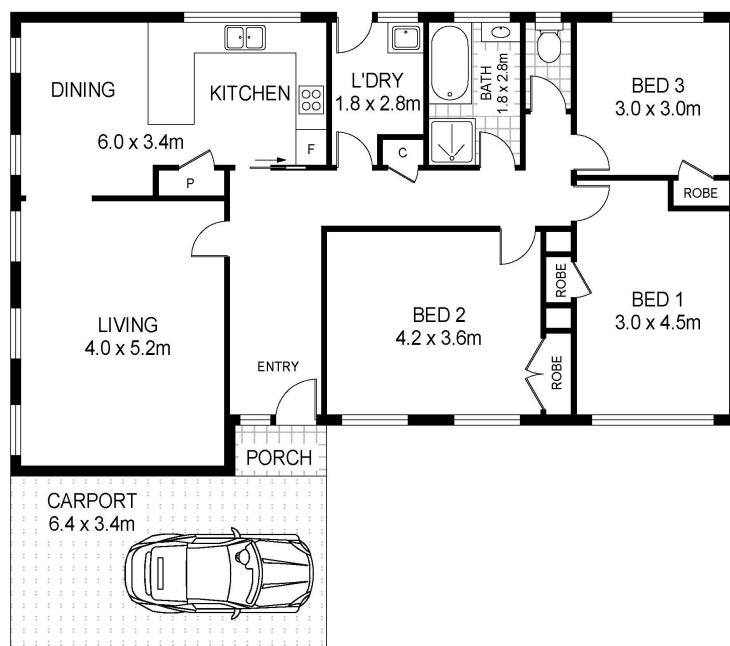
89 Gray Street
Hamilton, VIC
03 5551 6600

Rosi Egerton

0408 199 794







Scale in metres. Indicative only. Dimensions are approximate. All information contained herein is gathered from sources we believe to be reliable. However we cannot guarantee its accuracy and interested persons should rely on their own enquiries.

5 Hewett Court, Hamilton