



540 Pine Lodge Road, FINLEY, NSW 2713

Country classic with acreage!

Situated between Finley & Tocomwal, this is a property with it all.

Nestled in a simple but elegant setting, this is a grand, double-storey home positioned on approximately 10 acres.

- Tasteful chef style kitchen with large stove, dishwasher & generous storage.
- Glass sunroom/dining open plan living area opens onto the large living area with wood heater & split system air conditioner.
- Large main bathroom with spa bath & separate shower.
- Ensuite with double basin vanity, shower & toilet is attached to the master bedroom.
- Classic country feel bedrooms are all well-lit with natural light.
- Joining the upstairs bedrooms is a fantastic sized living/play area ideal for the younger family members.
- Outdoor entertainment area with a well-sized pool
- 2-bay drive in carport adjacent to the home + various smaller storage sheds.

The particulars contained herein are supplied for information only and shall not be taken as a representation in any respect on the part of the vendor or its agent. Interested parties should contact the nominated person or office for full and current details.

TYPE: For Sale

INTERNET ID: 300P184037

SALE DETAILS

\$849,000

CONTACT DETAILS

Elders Finley
214 Murray Street
Finley, NSW
03 5890 6010

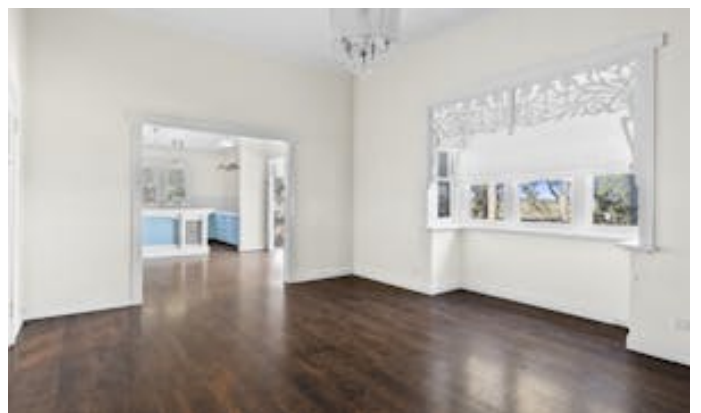
Janette Falls
0419 353 985

- 5 delivery entitlements for Stock & Domestic use

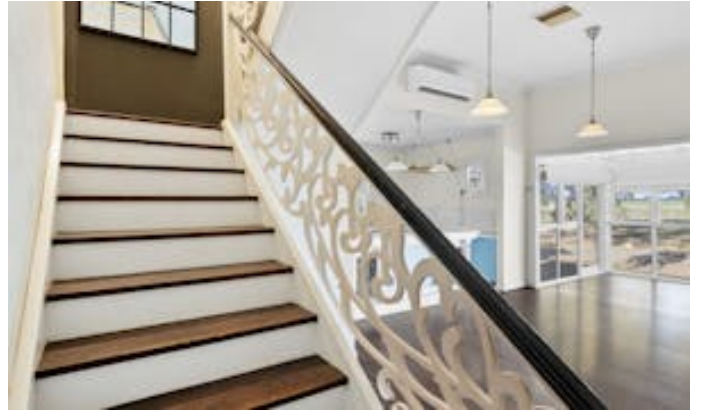
Exceptional opportunity offering privacy and endless possibilities.

Elders Finance can unlock the doors to the right finance option for you and get you into the home of your dreams. For further information, head to <https://eldersfinance.com.au/personal/home-loans/>

- Land Area 10 acres
- Bedrooms: 6
- Bathrooms: 2
- Double carport

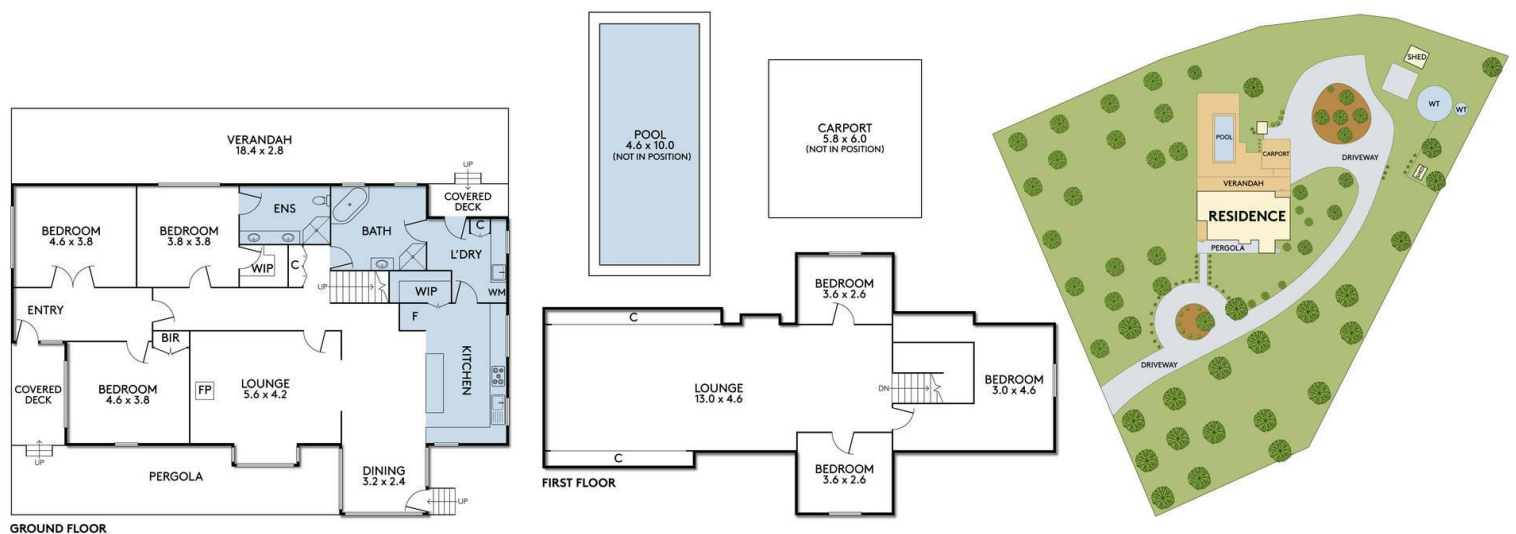








540 PINE LODGE ROAD FINLEY



THE ABOVE PLAN IS AN ARTIST'S IMPRESSION ONLY, IT INCLUDES ELEMENTS THAT ARE FOR DISPLAY PURPOSES ONLY AND MAY NOT BE TO SCALE. LANDSCAPING SHOWN IS INDICATIVE ONLY. DIMENSIONS ARE APPROXIMATE.

