

27 Wilksch Road, GLOSSOP, SA 5344

Family Retreat set amongst the Mallee

Tucked away in a private location surrounded by our beautiful mallee is this well-designed family sanctuary. Built in 2007 this residence offers approximately 251m² of spacious living, emphasising comfort and ample room to grow.

Upon entering the home through the entryway that leads past the formal lounge and master suite and into the heart of the home. The living area is an open area boasting substantial sized kitchen with all modern facilities, walk in pantry, dining and lounge space.

Natural light floods through expansive windows, illuminating four generously sized bedrooms with built in or walk in wardrobes, each providing a tranquil retreat. The master suite, with walk in robe and ensuite.

Two beautifully designed bathrooms cater for the family and guests. Further enhancing this residence is a formal lounge and dining area.

Stepping outside into the impressive outdoor entertaining area perfect for alfresco dining, entertaining and lazy afternoons. Single carport with auto roller door, plus ample shedding with a 6-bay shed and 3 extension bays, with power, lights and concrete floor.

27 Wilksch Road is not just a house it a lifestyle, offering peace, privacy and tranquillity, conveniently located only minutes from Berri and Barmera and is waiting for the next

TYPE: For Sale

INTERNET ID: 300P184077

SALE DETAILS

\$780,000

CONTACT DETAILS

Elders Riverland

2 East Terrace

LOXTON, SA

8588 6066

RLA: 62833

Karen Nash

0437 236 669

The particulars contained herein are supplied for information only and shall not be taken as a representation in any respect on the part of the vendor or its agent. Interested parties should contact the nominated person or office for full and current details.

family to enjoy all that this property has to offer.

- Built 2007
- 5.64Ha's
- Four spacious bedrooms, master with ensuite
- Roller shutter to formal lounge room
- Ducted reverse cycle air conditioning and ceiling fans
- Settling Tank, rainwater tanks
- Central Irrigation Trust water connection
- 6 x bay shed, with 3 bay extension

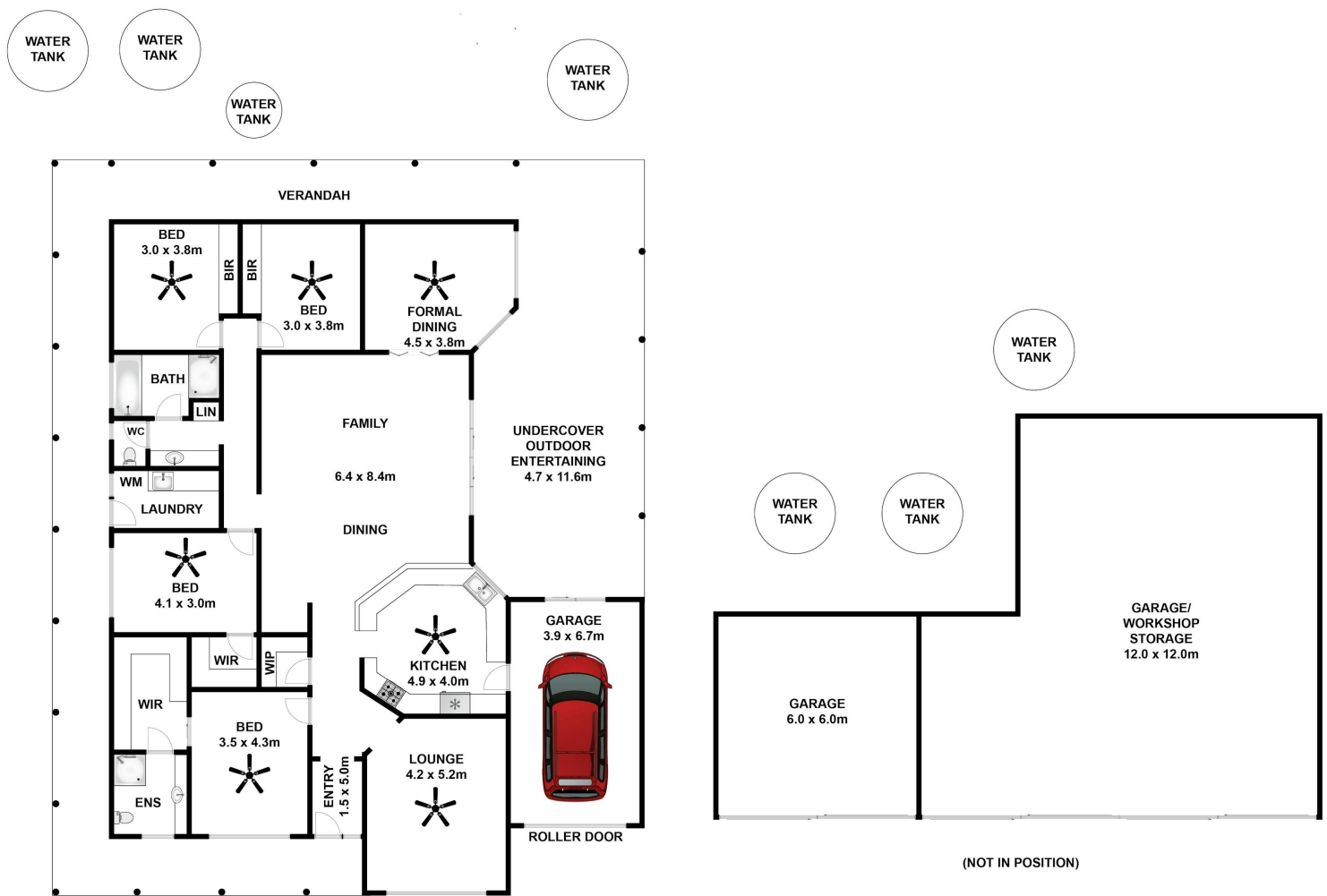
Discover this lifestyle oasis and family gem surrounded by mallee in Glossop.

Disclaimer: In preparing this information we have used our best endeavours to ensure details contained herein are true and accurate, however we accept no responsibility and disclaim all liability in respect of any errors, omissions or inaccuracies. Prospective purchasers should make their own enquiries to verify the information contained herein.
RLA62833

- Land Area 251.00 square metres
- Bedrooms: 4
- Bathrooms: 2
- Car Parks: 7







Approx House Area 251m²

Whilst bwrn.com.au has made every attempt to ensure the accuracy of the floor plan contained here, measurements are approximate and no responsibility is taken for any error, omission, or mis-statement. This plan is for illustrative purposes only.

27 Wilksch Road, Glossop

Elders

Real Estate