



10 Oldridge Street, WHYALLA NORRIE, SA 5608

ESTABLISHED TENANCY – QUALITY INVESTMENT OPPORTUNITY!

*** INSPECTION BY APPOINTMENT ONLY DUE TO TENANCY ***

Allotment size: 654m2

Council rates: \$1,829.76 per annum

Water supply & sewer rates: approx \$165 per quarter

Year built: 1960

Zoned: General Neighbourhood

Occupancy: Currently tenanted \$260 per week until 14 August 2026

Nestled in a great location, this neat and tidy maisonette offers an ideal opportunity for investors. Currently leased to a secure tenant until August 2026, it provides immediate rental returns and peace of mind. Positioned close to local amenities, schools, and public transport, convenience is at your doorstep. A smart addition to any investment portfolio in a high-demand area.

TYPE: For Sale

INTERNET ID: 300P184229

SALE DETAILS

UNDER CONTRACT

CONTACT DETAILS

Elders Real Estate - Whyalla

2 Patterson Street

Whyalla, SA

08 8644 4600

RLA: 62833

Jake Pope

0437 829 177

Welcoming entry into open-plan living with air conditioning; wall removed between lounge and kitchen for improved flow and space

Timber floorboards throughout all living areas and bedrooms for a warm, cohesive feel

Modern upgraded kitchen featuring electric cooktop and ample storage

Three bedrooms

Functional tiled bathroom

Quality blinds fitted throughout

Practical tiled laundry with external access

Established spacious rear yard

Garden shed

Rainwater tank

Secure fencing with rear lane access

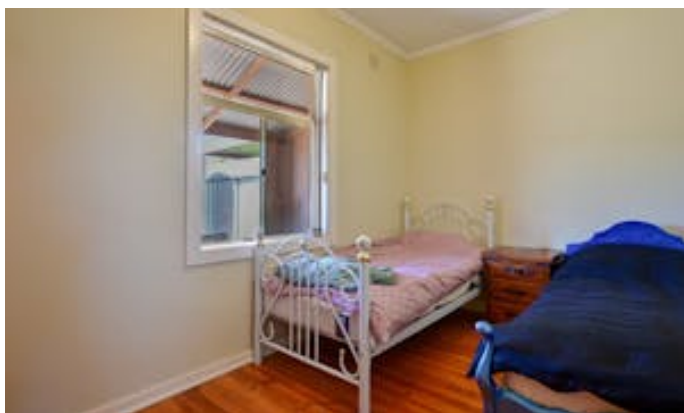
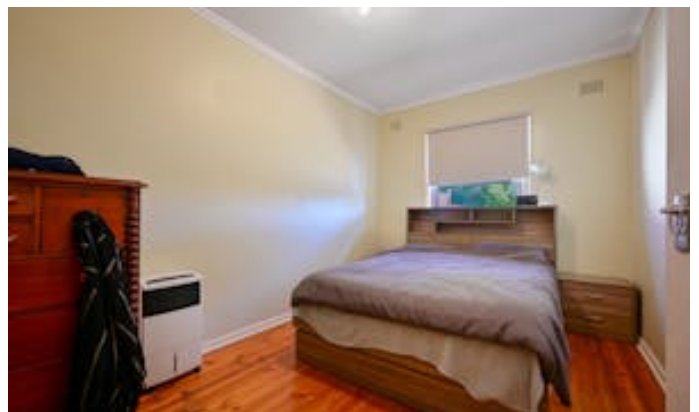
Low-maintenance front yard for easy upkeep

Upgraded colorbond roofing

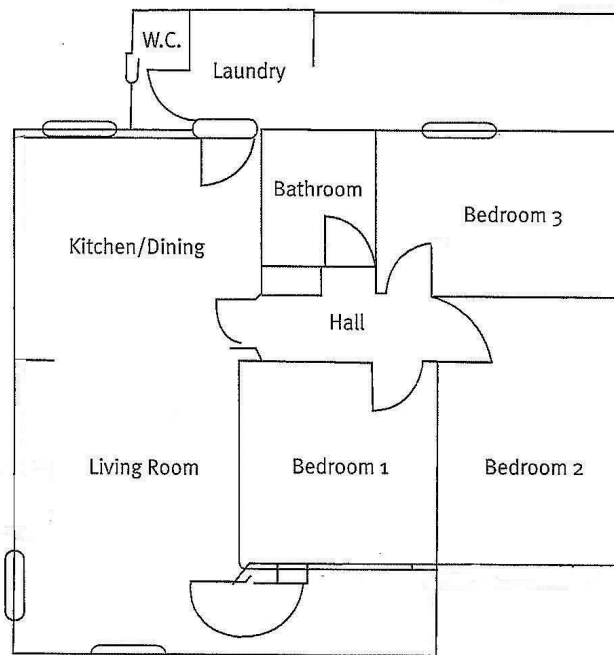
Carport with automatic roller door for secure off-street parking

Disclaimer: We have in preparing this information used our best endeavours to ensure that the information contained herein is true and accurate but accept no responsibility and disclaim all liability in respect of any errors, omissions, inaccuracies, or misstatements that may occur. Prospective purchasers should make their own enquiries to verify the information contained herein. Elders Real Estate RLA62833

- Land Area 654.00 square metres
- Bedrooms: 3
- Bathrooms: 1
- Single garage







NOT TO SCALE

For Room Illustration Only

