



2 Coachwood Lane, BALAKLAVA, SA 5461

Exceptional Family Home

Nestled on a spacious 770m² corner allotment, 2 Coachwood Lane in Balaklava offers an exceptional family home with versatile living and ample storage. This solid Fairmont residence, built in 2010, boasts four generous bedrooms including a master suite with ensuite and walk-in robe. Bedrooms two, three, and four all feature built-in robes, ensuring plenty of storage for the whole family.

The home impresses with three separate living areas: a formal lounge, an expansive open-plan kitchen, dining and living space, plus a dedicated games room-perfect for entertaining or relaxing. The kitchen is well-appointed with a gas cooktop, electric oven, dishwasher, corner pantry, and abundant cabinetry including large drawers.

Comfort is assured year-round with ducted, reverse-cycle zoned air conditioning. Energy efficiency is enhanced by a 5kW solar system, gas hot water, and rainwater storage. Outside, double gates provide secure backyard access, suitable for caravan storage or other large vehicles. A double garage under the main roof, complete with electric roller door, adds convenience, with a handy garden shed finishing off the storage solutions. This home combines space, functionality, and comfort.

Contact Lisa Curnow on 0421 278 185 or lisa.curnow@elders.com.au

The particulars contained herein are supplied for information only and shall not be taken as a representation in any respect on the part of the vendor or its agent. Interested parties should contact the nominated person or office for full and current details.

TYPE: For Sale

INTERNET ID: 300P184318

SALE DETAILS

\$689,000

CONTACT DETAILS

Elders Real Estate Clare Valley / Burra

230 Main North Road

Clare, SA

08 8842 9300

Lisa Curnow

0421278185

RLA 62833

Wakefield Regional Council

Zone: Neighbourhood

Year Built: 2010 by Fairmont Homes

Council Rates: \$3,172.10 2025/26

Land Size: 770m2 (approx.)

Living size: 218m2 (approx.)

Disclaimer: Care is taken to verify the correctness of all details used in this advertisement. No warranty is given as to the correctness of information supplied and neither the owners nor their agent can accept responsibility for error.

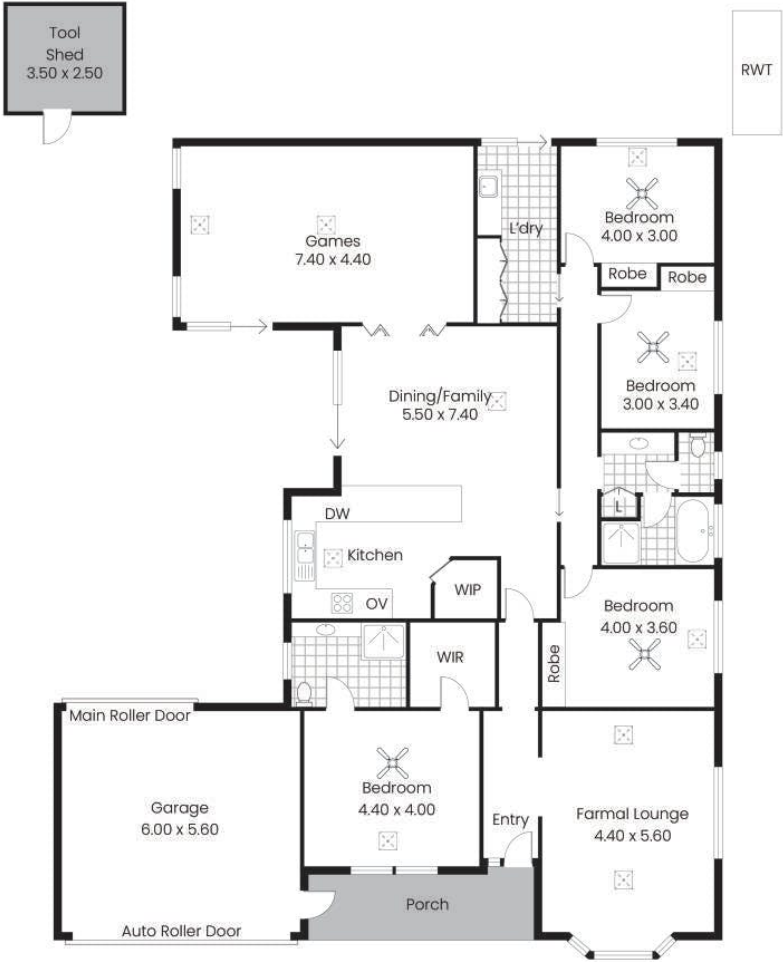
- Land Area 770.00 square metres
- Building Area: 218.00 square metres
- Bedrooms: 4
- Bathrooms: 2
- Car Parks: 2
- Double garage







2 Coachwood Lane,
BALAKLAVA



Living:	218.10sqm
Porch/Shed:	19.70sqm
Garage:	33.60sqm
Total:	271.40sqm