



1/48 Richardson Crescent, PARK GROVE, TAS 7320

Secure Your Slice Of Park Grove – Modern Living With All The Essentials

Tucked away in a peaceful street surrounded by quality homes, this well-appointed brick unit presents an exceptional opportunity to secure a foothold in the ever-popular suburb of Park Grove. Offering a low-maintenance lifestyle without compromise on comfort or modern style, this property is ideal for those seeking convenience, privacy, and long-term value in a sort after location.

Inside, you'll find two generously sized bedrooms both with built-in wardrobes. A beautiful spacious light and bright open plan kitchen, living and dining area kept comfortable year-round with a Fujitsu reverse cycle air conditioner. The kitchen is an absolute standout feature with modern appeal and ample storage options, all complete with a large corner pantry, breakfast bar, microwave cavity and quality appliances such as a Euromaid oven and a Westinghouse dishwasher.

The updated bathroom consists of a separate shower and spa bath there is also a separate toilet for added practicality. In the hall you will find several sliding door cupboards thoughtfully designed to include the laundry for maximum storage. The home also includes an electric garage with internal access and a low-maintenance outdoor space with established plants.

TYPE: For Sale

INTERNET ID: 300P184418

SALE DETAILS

Offers Over \$499,000

CONTACT DETAILS

Elders Real Estate Burnie

72-74 Wilson Street

Burnie, TAS

03 6432 2311

Jorja O'Halloran

0409 039 608

This property is immaculately kept, move-in ready, and located just minutes from the North West Regional Hospital, local schools, university campuses, cafes, local plant nursery, tennis courts, local IGA and Burnies major shopping centers. Its position offers a peaceful setting with a strong sense of community, making it a standout choice for health professionals, downsizers, or investors looking to add a quality home to their portfolio. With its functional layout, and solid presentation, 1/48 Richardson Crescent presents a rare opportunity to

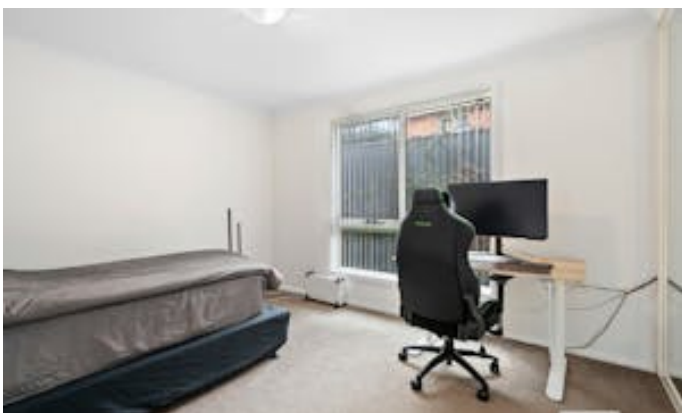
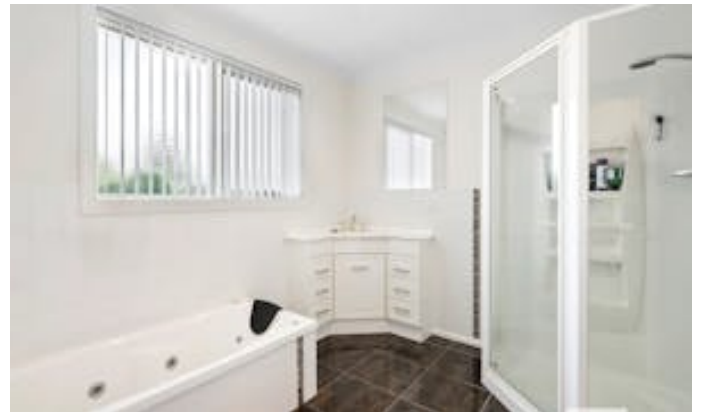
secure not only a beautifully built unit but a lifestyle of absolute convenience.

The property is currently tenanted and requires 48hrs notice for all inspections.

Contact Jorja O'Halloran at Elders Real Estate Burnie today to arrange your inspection.

DISCLAIMER: While Elders Real Estate Burnie has taken every care to verify the accuracy of the details in this advertisement, we cannot guarantee its correctness. Prospective buyers or tenants need to take such action as is necessary, to satisfy themselves of any pertinent matters

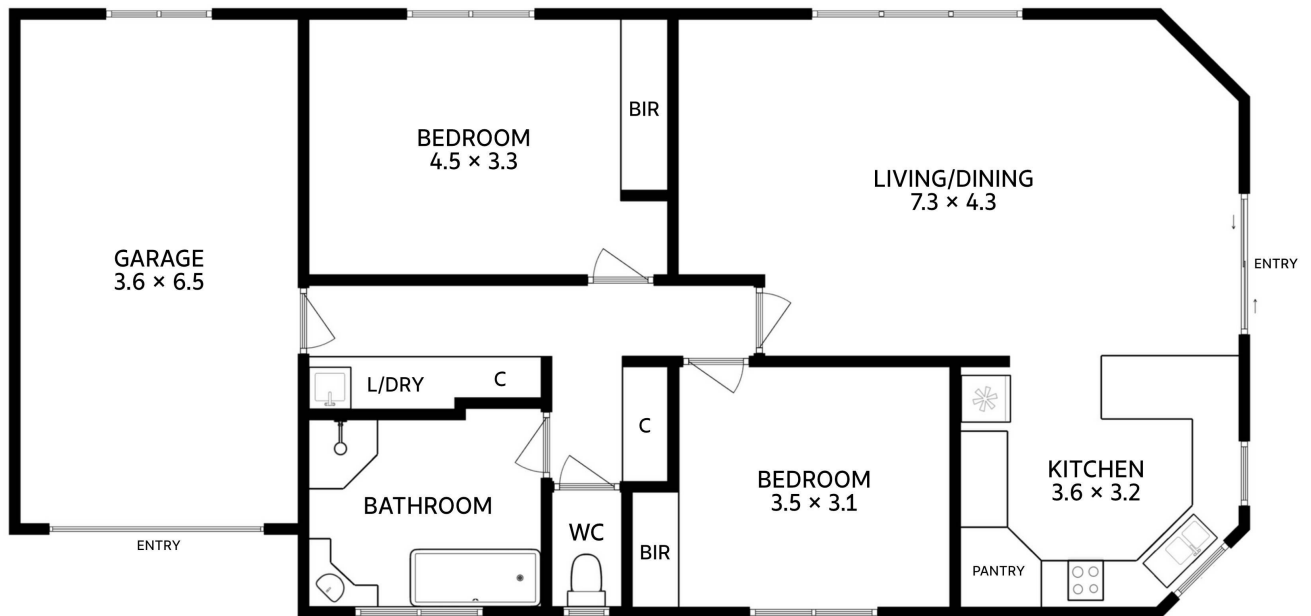
- Land Area 265.00 square metres
- Building Area: 147.00 square metres
- Bedrooms: 2
- Bathrooms: 1
- Single garage







Unit 1/48 Richardson Crescent
Park Grove



Approx. Floor Area 115 sq m

All measurements are internal and approximate.
This plan is a sketch for illustration, not valuation.

