

3 Kingston Terrace, AUBURN, SA 5451

The Complete Package

Set on a spacious corner block of approximately 1,151sqm, 3 Kingston Terrace offers comfortable, low-maintenance living with a range of practical features â## truly the complete package. This well-presented home boasts two generous double bedrooms, both with built-in robes, while the master enjoys direct access to the bathroom and its own private external door.

The open-plan lounge, dining, and kitchen area is the heart of the home, designed for easy living and entertaining. The kitchen features an island bench/breakfast bar, induction cooktop, dishwasher, and a cleverly integrated laundry. A reverse cycle air conditioner and ceiling fan in the living space ensure comfort all year round.

Step outside to the paved undercover entertaining area â## perfect for relaxing or hosting guests. The bathroom includes a shower, corner spa, and vanity, with a separate toilet for added convenience.

For those who need extra space and functionality, the double carport and storage shed are major bonuses. The shed includes a sink, toilet, and a 10,000L (approx.) rainwater tank on a pressure pump. Additional features include a 2kW solar system, an extra 1,000L rainwater tank plumbed to the toilet and laundry, and an environmentally friendly

TYPE: For Sale

INTERNET ID: 300P184466

SALE DETAILS

\$495,000 - \$520,000

CONTACT DETAILS

Elders Real Estate Clare Valley / Burra

230 Main North Road

Clare, SA

08 8842 9300

Rob Calaby

0428560301

The particulars contained herein are supplied for information only and shall not be taken as a representation in any respect on the part of the vendor or its agent. Interested parties should contact the nominated person or office for full and current details.

septic system.

Ideal for first home buyers, downsizers, or investors, this well-equipped home combines comfort, practicality, and sustainability in one appealing package. Don't miss your opportunity to secure this outstanding property in the charming township of Auburn.

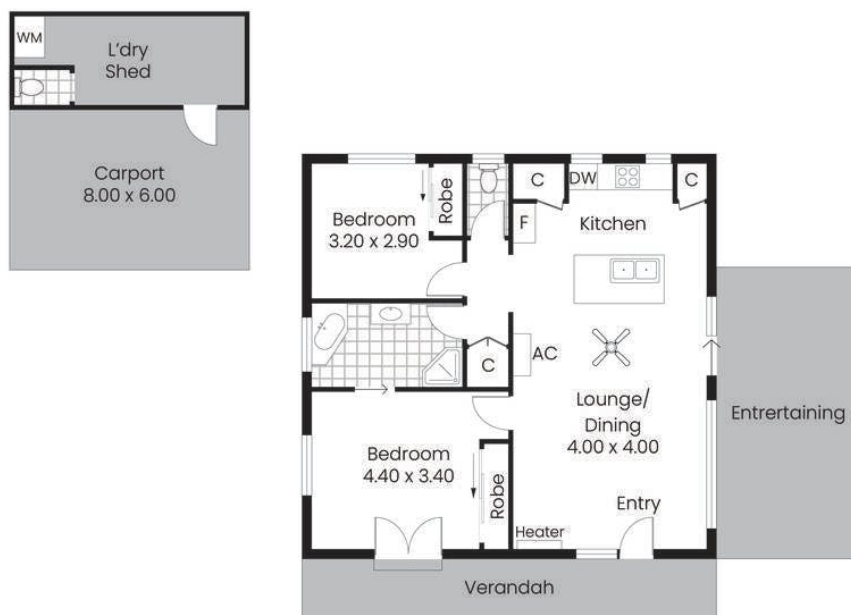
- Land Area 1,151.00 square metre
- Bedrooms: 2
- Bathrooms: 1
- Car Parks: 4











Living:	72.30sqm
Verandah:	11.20sqm
Entertaining:	18.90sqm
Carport:	48.00sqm
Shed:	24.00sqm
Total:	174.40sqm

This drawing is for illustration purposes only.
All measurements are internal and approximate.
Details intended to be relied upon should be
independently verified.
Produced by Open2view.com