



3/19 Lorna Lim Terrace, DRIVER, NT 0830

GROUND FLOOR UNIT WITH COURTYARD – CLOSE TO CBD

Step into easy living with this generously sized ground-floor unit, perfectly positioned just minutes from Palmerston CBD. Recently refreshed with a modern stone-bench kitchen, this home offers style, comfort, and convenience.

Featuring two well-proportioned bedrooms, a bright and airy open-plan living area, and a functional bathroom, the space feels larger than you'd expect. The private courtyard is ideal for a morning coffee, pot plants, or entertaining friends.

Currently rented at \$440 per week, this property is available to purchase with or without the tenant-making it equally attractive for investors or owner-occupiers.

Key features:

- Ground floor with easy access
- Recently renovated stone kitchen
- Large open-plan living and dining area

TYPE: For Sale

INTERNET ID: 300P184666

SALE DETAILS

PRICE GUIDE
\$280,000

CONTACT DETAILS

Darwin
70 Smith Street
DARWIN, NT
08 8946 0500

Colin Morrow
0468 954 318

- Two spacious bedrooms, one bathroom
- Private courtyard for relaxing or entertaining
- One undercover car park
- Storeroom for extra convenience
- Minutes to Palmerston CBD
- Currently rented at \$440/week â## flexible settlement with or without tenant

Move-in ready and brimming with potential-don't miss this opportunity!

Body Corporate Whittles Body Corporate Management Services

Body Corporate \$827 p/q approx.

Sinking Fund \$154 p/q approx.

Council Rates \$ 1,948 p/a approx.

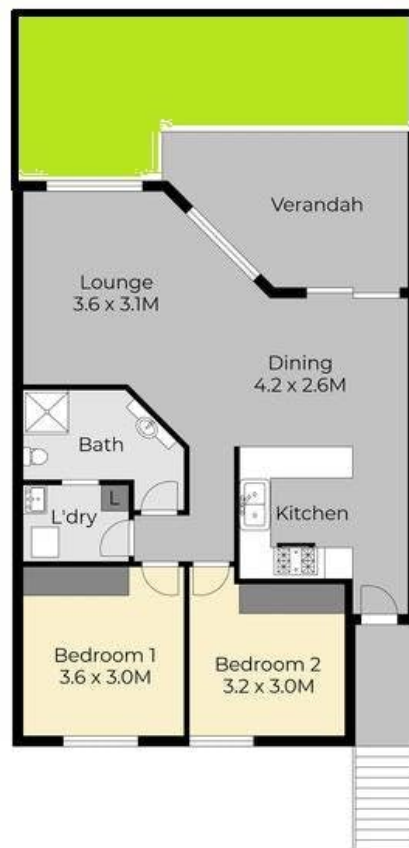
Other features: Close to Schools, Close to Shops, Close to Transport

- Land Area 138.00 square metres
- Building Area: 73.00 square metres
- Bedrooms: 2
- Bathrooms: 1
- Car Parks: 2









3/19 Lorna Lim Tce, DRIVER NT0830

Sizes and dimensions are approximate. Actual may vary.
Skelton Studio

