



3/110 Flynn Circuit, BELLAMACK, NT 0832

STYLISH 3-BEDROOM TRIPLEX TOWNHOUSE, BALCONY, COURTYARD & DOUBLE PARKING!

Stylish and low-maintenance, this three-bedroom, 2 ½ bathroom triplex townhouse offers the feel of a private home with its own roofline, entrance and private courtyard.

Inside, you'll enjoy a flexible layout with both a lounge and separate family room, plus the bonus of an upstairs balcony, perfect for a morning coffee or evening wind-down. The private courtyard is easy-care yet inviting, ideal for entertaining friends, pets, or hosting a weekend BBQ. Two Undercover parking right at the front door adds to the convenience.

Whether you're after a stylish first home, a smart investment with strong rental appeal, or simply an easy lifestyle in a prime location, this property ticks all the boxes.

Why you'll love it:

- Separate roofline and private yard â## townhouse living without the compromise
- Upstairs balcony for fresh air and relaxation
- Easily maintained courtyard â## enjoy the outdoors without the hard work

The particulars contained herein are supplied for information only and shall not be taken as a representation in any respect on the part of the vendor or its agent. Interested parties should contact the nominated person or office for full and current details.

TYPE: For Sale

INTERNET ID: 300P184677

SALE DETAILS

PRICE GUIDE
\$530,000

CONTACT DETAILS

Darwin

70 Smith Street
DARWIN, NT
08 8946 0500

Colin Morrow
0468 954 318

- Double undercover parking right at the properties front door
- Family-friendly layout with two living spaces

And the position? Unbeatable. You'll be just moments from local shops, cafes, hairdressers, the Bell Bar & Bistro of Bellamack, and within walking distance to Forrest Park School.

Council rates: \$2,071.16 p/a approx.

Body corporate contributions: \$750 p/q approx.

Sinking fund contributions: \$84 p/q approx.

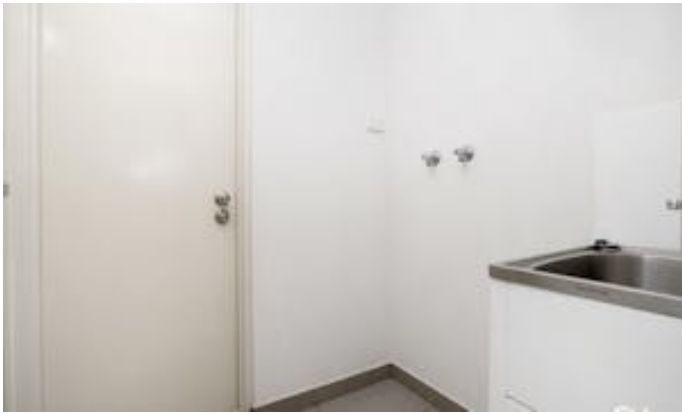
Rental estimate: \$650 per week

Other features: Close to Schools, Close to Shops, Close to Transport, Exhaust, Openable Windows, Window Treatments

- Land Area 311.00 square metres
- Building Area: 111.00 square metres
- Bedrooms: 3
- Bathrooms: 2
- Double carport
- Ensuite

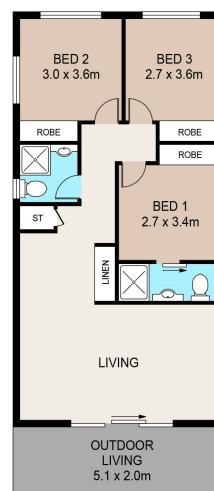








GROUND FLOOR



FIRST FLOOR

3/110 FLYNN CIRCUIT, BELLAMACK

DISCLAIMER:
PLANS SHOWN ARE FOR MARKETING PURPOSES ONLY. ALL DIMENSIONS ARE APPROXIMATE AND NOT TO SCALE. THEY ARE SUBJECT TO ERRORS AND INACCURACIES AND NO LIABILITY WILL BE ACCEPTED. INTERESTED PARTIES SHOULD MAKE THEIR OWN INQUIRIES.