

1097 Valley Road, KOOLUNGA, SA 5464

Charming Country Retreat on 1.14ha

Nestled in the peaceful rural landscape of Koolunga, 1097 Valley Road presents a rare opportunity to secure a picturesque 1.14-hectare (approx.) lifestyle property. This charming 3-bedroom stone homestead, circa early 1900s, is steeped in character and timeless appeal, blending original heritage features with thoughtful modern updates, including roofing & electrical.

Surrounded by beautifully landscaped gardens, this delightful home offers a tranquil and self-sufficient lifestyle. Step outside and discover your own private fruit orchard, a well-maintained chicken coop, and a variety of established trees that create a serene country atmosphere. Multiple outbuildings provide excellent storage, workshop space, or potential for further development.

Inside the homestead, period details such as high ceilings, solid stone walls, and original woodwork reflect the home's history, while offering warmth and comfort. The fully fenced yard ensures a secure space for children and pets to play safely.

Perfect for hobby farmers, gardening enthusiasts, or those simply seeking a quiet retreat from the hustle and bustle, this property ticks all the boxes for peaceful rural living. Whether you're looking to raise a family in nature, retire in comfort, or create a

The particulars contained herein are supplied for information only and shall not be taken as a representation in any respect on the part of the vendor or its agent. Interested parties should contact the nominated person or office for full and current details.

TYPE: For Sale

INTERNET ID: 300P184740

SALE DETAILS

\$570,000 - \$620,000

CONTACT DETAILS

Elders Real Estate Clare Valley / Burra

230 Main North Road

Clare, SA

08 8842 9300

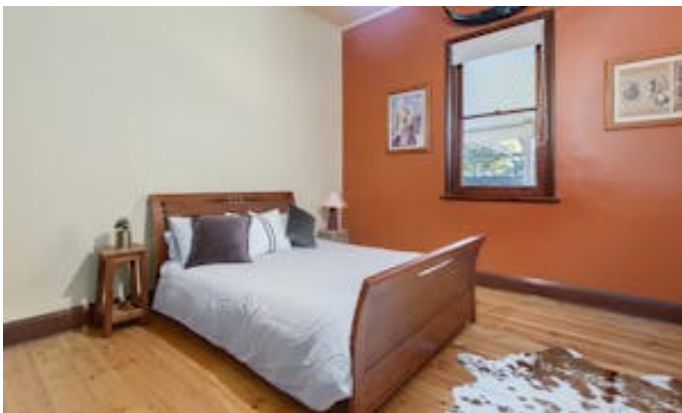
Rob Calaby

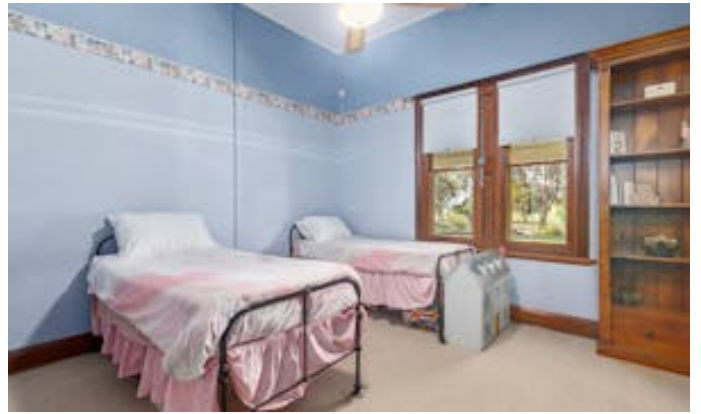
0428560301

weekend escape, 1097 Valley Road delivers the charm, space, and potential you've been dreaming of.

Don't miss this unique opportunity to own a slice of country paradise. Enquire today to arrange your private inspection.

- Land Area 1.14 hectares
- Bedrooms: 3
- Bathrooms: 1











Living:	135.36sqm
Verandah:	109.44sqm
Carport:	30.00sqm
Garage/Workshop:	78.00sqm
Shed:	51.00sqm
Total:	403.80sqm

This drawing is for illustration purposes only.
All measurements are internal and approximate.
Details intended to be relied upon should be
independently verified.
Produced by Open2view.com