

59 Brock Street, EUROA, VIC 3666

Elevated Comfort Just Steps from Euroa's Main Street

This bright three-bedroom home sits elevated on a quiet Euroa street, delivering bright, comfortable living just a short walk from town amenities. The light-filled interior and thoughtful layout make it immediately inviting from the moment you step inside.

The open-plan kitchen, dining and family area anchors the home with polished timber floors and quality finishes throughout. The practical kitchen features white cabinetry, stone benchtops and tiled splashback, while ducted heating and evaporative cooling ensure year-round comfort.

What sets this property apart is the versatile second living area – use it as a home office for remote work, convert it to a fourth bedroom for growing families, or keep it as additional family space. This flexibility gives the home an edge over standard three-bedroom offerings.

Natural light streams through the home's well-positioned windows, enhanced by the elevated location that captures both morning sun and afternoon breezes. The main bedroom includes ensuite and walk-in robe, while two additional bedrooms offer built-in storage.

Outside, the covered alfresco overlooks a generous backyard perfect for families, while the front verandah and established gardens create genuine street appeal.

TYPE: For Sale

INTERNET ID: 300P184862

SALE DETAILS

\$550,000

CONTACT DETAILS

Euroa
27 Binney Street
EUROA, VIC
03 5795 2294

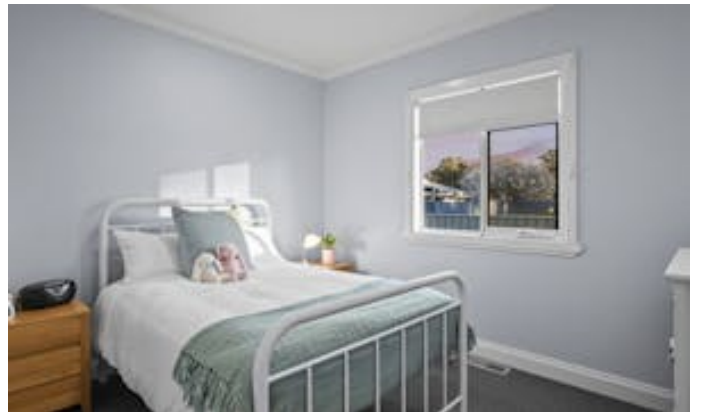
Brendan Allen
0499 229 007

The location delivers real convenience â## walk to Euroa's shops, cafes, schools and services without the car. This elevated position provides privacy and outlook while keeping you connected to everything that makes Euroa an increasingly popular choice for tree-change buyers.

Fresh, flexible, and ready to move into â## this home offers more than most in today's market.

- Land Area 591.00 square metres
- Bedrooms: 3
- Bathrooms: 2
- Car Parks: 2
- Single carport







59 Brock Street, Euroa

Elders



N

THE ABOVE PLAN IS AN ARTIST'S IMPRESSION ONLY, IT INCLUDES ELEMENTS THAT ARE FOR DISPLAY PURPOSES ONLY AND MAY NOT BE TO SCALE. LANDSCAPING SHOWN IS INDICATIVE ONLY. DIMENSIONS ARE APPROXIMATE.