



18 Peckham Court, GUNN, NT 0832

ELEVATED HOME WITH ESCARPMENT VIEWS

This three-bedroom, two-bathroom elevated home is located opposite natural bushlands and captures stunning outlooks across the Gunn escarpment. Designed for relaxed living and entertaining, it offers modern finishes, generous outdoor spaces, and a peaceful setting.

- Spacious upstairs balcony with afternoon shade and escarpment views
- Open-plan living with hardwood floors and abundant natural light
- Modern kitchen with L shaped breakfast bar
- Three bedrooms with built-in robes; master with ensuite
- Air-conditioned throughout for year-round comfort
- Fenced in-ground pool with Bali-style gazebo and entertaining space
- Multiple Under-house parking and entertaining area, maximising usable space
- Downstairs laundry, storage, and garden shed

TYPE: For Sale

INTERNET ID: 300P184900

SALE DETAILS

PRICE GUIDE
\$630,000

CONTACT DETAILS

Darwin
70 Smith Street
DARWIN, NT
08 8946 0500

Colin Morrow
0468 954 318

- Secure and private setting, ideal for family living

Light, bright, and move-in ready - this contemporary home combines lifestyle and location all in one.

COUNCIL RATES | \$2,071.16 p/a approx.

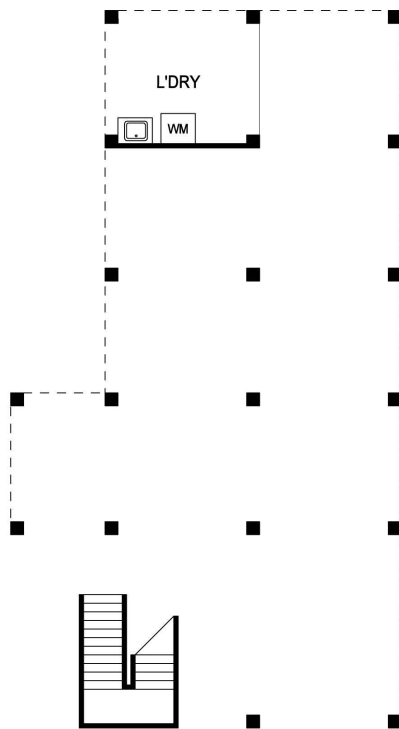
Other features: Close to Schools, Close to Shops, Close to Transport

- Land Area 421.00 square metres
- Building Area: 132.00 square metres
- Bedrooms: 3
- Bathrooms: 2
- Car Parks: 2

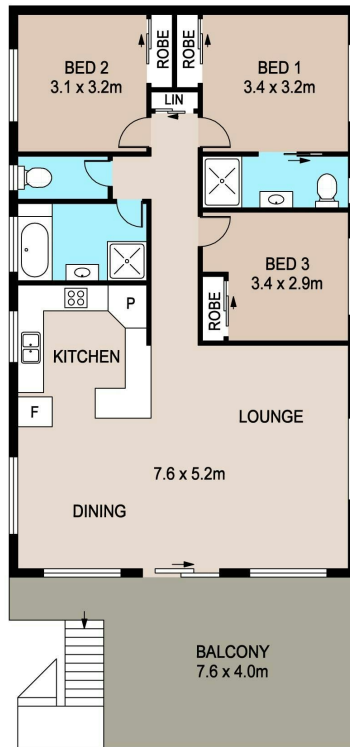




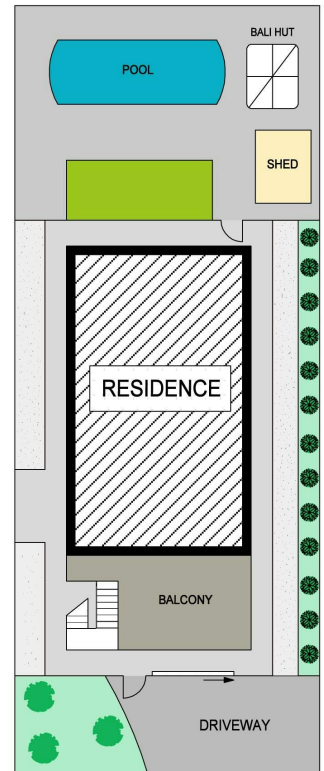




GROUND FLOOR



FIRST FLOOR



SITE PLAN

18 PECKHAM COURT, GUNN

DISCLAIMER: PLANS SHOWN ARE FOR MARKETING PURPOSES ONLY. ALL DIMENSIONS ARE APPROXIMATE AND NOT TO SCALE. THEY ARE SUBJECT TO ERRORS AND INACCURACIES AND NO LIABILITY WILL BE ACCEPTED. INTERESTED PARTIES SHOULD MAKE THEIR OWN INQUIRES.