

4/200 Melbourne Street, MULWALA, NSW 2647

COMBINING LIFESTYLE & CONVENIENCE.

Perfectly positioned just moments from the shimmering waters of Lake Mulwala and within walking distance to Yarrowonga's vibrant Main Street and three popular licensed clubs, this stylish double-storey townhouse presents the ultimate in low-maintenance living with lifestyle appeal.

Designed with functionality and space in mind, the groundfloor boasts a light-filled open-plan kitchen, dining, and living area that flows seamlessly to a private alfresco for morning coffees or evening entertaining. A convenient powder room and laundry complete the lower level.

Upstairs, discover three generously sized bedrooms, including a Master suite with ensuite, complemented by a central family bathroom, a second lounge area, and a handy kitchenette-perfect for guests or dual living flexibility. Step outside to a private balcony for year-round enjoyment.

Additional features include:

- * Double garage with internal access.
- * Split-system air conditioning throughout plus ceiling fans.
- * Ample storage across both levels.

The particulars contained herein are supplied for information only and shall not be taken as a representation in any respect on the part of the vendor or its agent. Interested parties should contact the nominated person or office for full and current details.

TYPE: Sold

INTERNET ID: 300P184960

SALE DETAILS

\$875,000

CONTACT DETAILS

**Elders Real Estate
Yarrowonga**

48 Belmore Street
Yarrowonga, VIC
03 5743 9500

Xavier Leslie
0409 324 037

* Access to a beautifully maintained communal in-ground pool.

Whether you're looking for a stylish holiday escape, investment opportunity, or permanent residence, this exceptional property delivers comfort, convenience, and a true lakeside lifestyle.

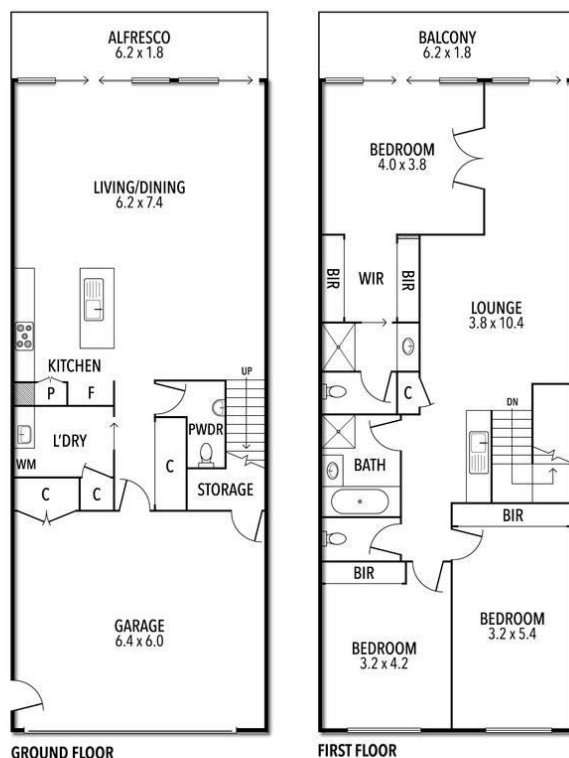
Other features: Carpeted, Close to Schools, Close to Shops, Close to Transport, Exhaust, Heating, Openable Windows

- Bedrooms: 3
- Bathrooms: 2
- Double garage
- Ensuite





4/200 Melbourne St, Mulwala



THE ABOVE PLAN IS AN ARTIST'S IMPRESSION ONLY, IT INCLUDES ELEMENTS THAT ARE FOR DISPLAY PURPOSES ONLY AND MAY NOT BE TO SCALE. LANDSCAPING SHOWN IS INDICATIVE ONLY. DIMENSIONS ARE APPROXIMATE.