



17 Nathan Court, GUNN, NT 0832

MODERN, SPACIOUS & ENVIABLY LOW MAINTENANCE!

Ideally situated within lovely, leafy Gunn, this spacious four-bedroom home perfectly complements effortless family living, creating a light-filled retreat moments from every convenience in Palmerston City.

- ï#- Great ground-level home designed with family living in mind
- ï#- Easy-care block in peaceful position at end of quiet cul-de-sac
- ï#- Neutral tones and tiled floors create effortless blank canvas
- ï#- Relaxed zones to retreat to within flow-through open-plan
- ï#- Central kitchen features modern appliances and breakfast bar
- ï#- Alfresco entertaining framed by private, low maintenance yard
- ï#- Master at front of home with walk-in robe and spotless ensuite
- ï#- Three robed bedrooms grouped around full family bathroom
- ï#- Excellent practical features inc. split-system AC and solar

The particulars contained herein are supplied for information only and shall not be taken as a representation in any respect on the part of the vendor or its agent. Interested parties should contact the nominated person or office for full and current details.

TYPE: For Sale

INTERNET ID: 300P184990

SALE DETAILS

PRICE GUIDE
\$683,000

CONTACT DETAILS

Darwin
70 Smith Street
DARWIN, NT
08 8946 0500

Gennie Cox
0411 151 911

ï#- Double lockup garage provides handy internal access to home

ï#- Large shade sail to front driveway provides extra parking options

If you long to live the easy life, while still enjoying plenty of space for your family, this gem of a property is ready and waiting to tick all your boxes!

Creating immediate appeal with pretty landscaping and an attractive facade, the home sets the tone as it welcomes you inside to reveal a beautiful sense of space through its carefully considered layout.

One of the first things you'll notice are the zoned living areas, working well for families looking for relaxed space to connect and retreat. Generous sized lounge room flows effortlessly to the open plan family and dining areas, centred by an updated kitchen complete with modern appliances, breakfast bar dining & plenty of storage.

Continuing that easy sense of flow, the living space extends seamlessly outdoors, where you find a spacious covered verandah and super easy-to-maintain backyard. Ideal for entertaining, this is where you'll retreat to when you have friends over, or you're firing up the BBQ for mid-week family meals.

At the front of the home, the master impresses with a walk-in robes and ensuite, while three additional robed bedrooms group around the main bathroom with bath, shower and separate WC.

Back to those boxes that need ticked off? There is an internal laundry, split-system AC in every room, and solar to keep power bills down, with secure parking in double garage as well as shade sail to driveway.

A short stroll to the peaceful Sanctuary Lakes Park, the property is also moments from essentials such as schools, childcare and transport, with all major shopping, dining and entertainment covered in nearby central Palmerston.

Come and see it for yourself! Call us today to arrange your inspection.

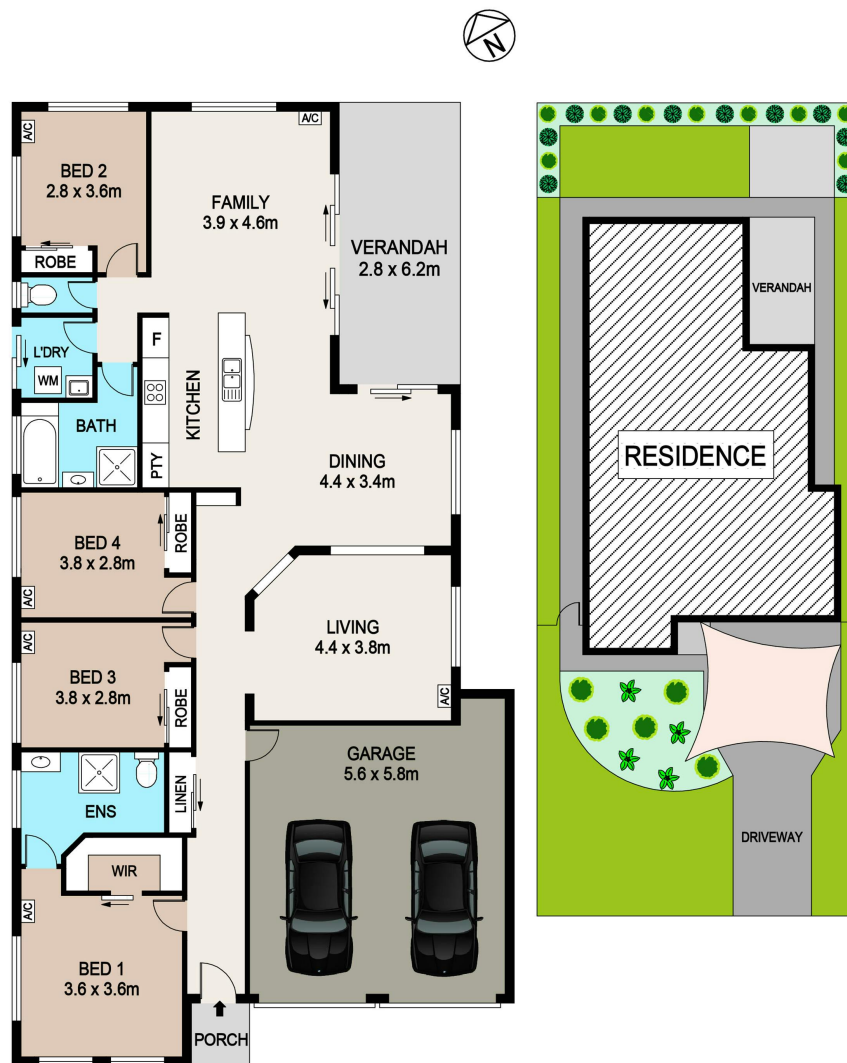
Other features: Close to Schools, Close to Shops, Close to Transport, Exhaust, Openable Windows, Roller Door Access

- Land Area 403.00 square metres
- Building Area: 213.00 square metres
- Bedrooms: 4
- Bathrooms: 2
- Car Parks: 2
- Double garage
- Ensuite









17 NATHAN COURT, GUNN

DISCLAIMER

PLANS SHOWN ARE FOR MARKETING PURPOSES ONLY. ALL DIMENSIONS ARE APPROXIMATE AND NOT TO SCALE. THEY ARE SUBJECT TO ERRORS AND INACCURACIES AND NO LIABILITY WILL BE ACCEPTED. INTERESTED PARTIES SHOULD MAKE THEIR OWN INQUIRES.