

## 6 Aldenham Road, MUIRHEAD, NT 0810

### PRIME LOCATION!

Boasting five spacious bedrooms, this large ground level family home is primely located in the quiet acclaimed suburb of Muirhead, just a short drive to Lee point beach, Casuarina Shopping Square and the iconic Breezes restaurant.

What we love about this home:

- Spacious open floor plan design
- Modern kitchen with pantry
- Five great sized bedrooms with full sized built in mirrored robes
- Master suite features a deluxe ensuite and walk-in robe
- Sleek main bathroom with floor to ceiling tiling and bath
- Split system air conditioning and modern ceramic floor tiles
- Alfresco verandah features a built-in BBQ
- The backyard is fully and securely fenced including separate side pedestrian gate for

The particulars contained herein are supplied for information only and shall not be taken as a representation in any respect on the part of the vendor or its agent. Interested parties should contact the nominated person or office for full and current details.

**TYPE:** For Rent

**INTERNET ID:** 300P185090

### RENTAL DETAILS

**Rent / Lease:**

**\$950 per week**

### CONTACT DETAILS

**Darwin**

70 Smith Street  
DARWIN, NT  
08 8946 0500

**Amy Hamilton**  
0418 893 403

easy access

- Spacious internal laundry with linen press
- Solar panels to help reduce energy costs

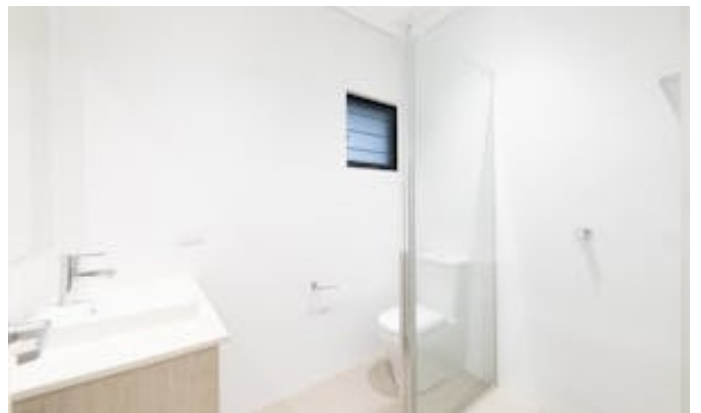
Located in the prestigious and sort after suburb of Muirhead, with public transport nearby and just a five-minute drive to major shopping centres, multiple schools, Royal Darwin Hospital and pristine beaches.

How to apply? A link will be sent via 2Apply once the property has been inspected.

Elders does NOT accept 1FORM applications. Please leave your details to register.

Other features: Close to Schools, Close to Shops, Close to Transport, Prestige Homes, Roller Door Access

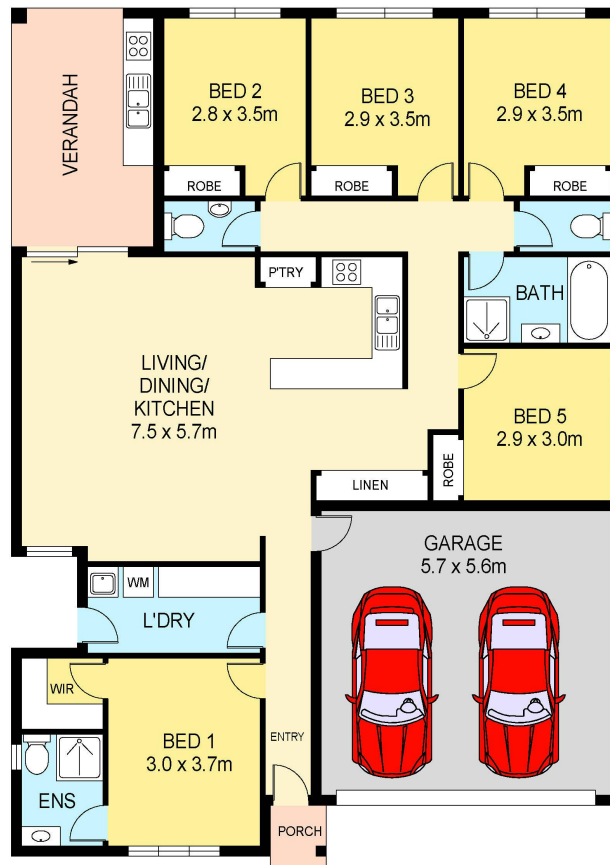
- This property is: Unfurnished
- Pets: No
- Available Now
- Land Area 490.00 square metres
- Building Area: 202.00 square metres
- Bedrooms: 5
- Bathrooms: 2
- Car Parks: 2
- Ensuite











Scale in metres indicative only. Dimensions are approximate. All information contained herein is gathered from sources we believe to be reliable. However we cannot guarantee its accuracy and interested persons should rely on their own enquiries.

6 Aldenham Road, Lee Point