



20 Emma Street, BREMER BAY, WA 6338

Charming Home in a Private Native Garden Setting

- * Solar passive design with slate floors & slow combustion fire
- * Open-plan living, dining & spacious kitchen filled with natural light
- * Large backyard with verandah, fruit trees, chook house & sheds
- * Located in the older part of town so easy walking distance to amenities

Tucked away amongst a beautiful native garden, this 3-bedroom, 1-bathroom home offers both comfort and charm. Built by TR Homes in 1993 it's an ideal base for a permanent lifestyle or the perfect holiday retreat.

Step inside to discover a freshly painted open-plan living, dining, and kitchen area where sunlight streams in to warm the cooler months. The kitchen has oodles of storage with cabinetry plus a corner pantry plus room for double fridge and freezer.

A wide hallway with 4 door linen closets leads to three generous bedrooms and a large family bathroom with shower and separate bathtub. The WC is at the end of the hall. The spacious laundry opens to the full length back verandah, where you'll find fruit

The particulars contained herein are supplied for information only and shall not be taken as a representation in any respect on the part of the vendor or its agent. Interested parties should contact the nominated person or office for full and current details.

TYPE: For Sale

INTERNET ID: 300P185097

SALE DETAILS

From \$630,000

CONTACT DETAILS

Albany Real Estate
189 Chester Pass Road
ALBANY, WA
08 9842 7900

Jeni Dawson
0447 790 129

trees, a garden shed, and a chook house. There is plenty of room for a large shed and space to drive down the side of the house if that is something you want to do in the future. A 3,700-litre rainwater tank supplements the town water.

Conveniently located, you can:

Walk just 300m to collect your mail

Stroll 435m to the general store

Enjoy a short 600m walk to the Bremer Bay Brewery

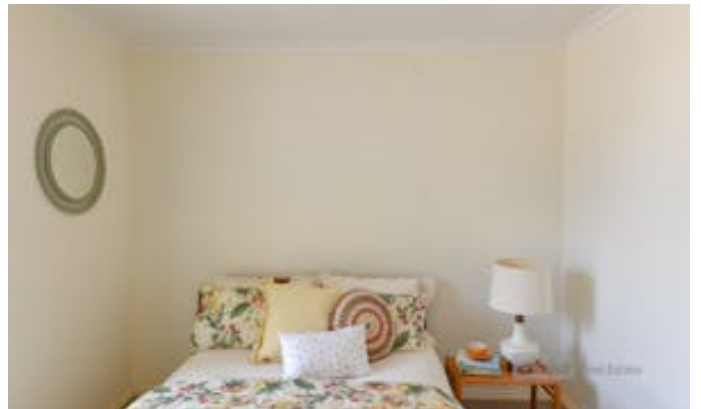
Or wander 500m to the river

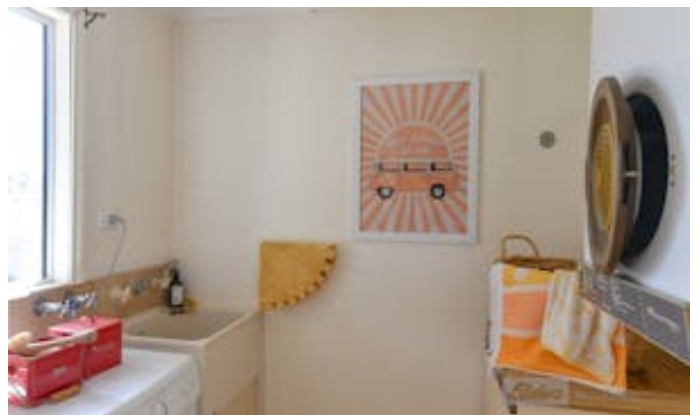
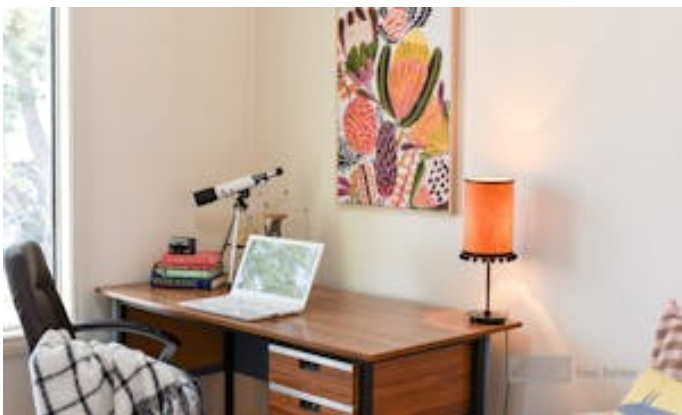
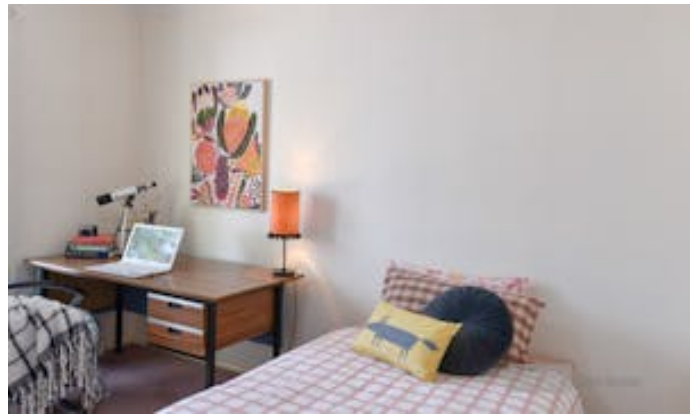
With your own personal touches, this delightful property could become the perfect Bremer Bay escape or a comfortable full-time home.

Other features: Close to Schools, Close to Shops, Window Treatments

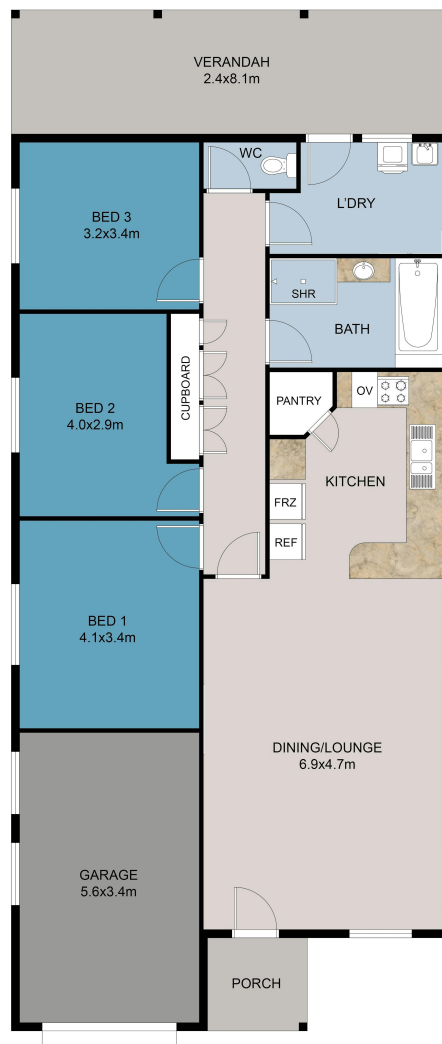
- Land Area 773.00 square metres
- Building Area: 137.00 square metres
- Bedrooms: 3
- Bathrooms: 1
- Single garage











FLOOR PLAN

This floor plan including furniture, fixture measurements and dimensions are approximate and for illustrative purposes only. BoxBrownie.com gives no guarantee, warranty or representation as to the accuracy and layout. All enquiries must be directed to the agent, vendor or party representing this floor plan.

20 Emma Street Bremer Bay