

52 Glencoe Crescent, TIWI, NT 0810

FAMILY-FRIENDLY AND MOVE-IN READY!!

This solid 3-bedroom home is packed with lifestyle features from a granite-top kitchen and large open-plan living area to an outdoor entertaining space. Positioned on a generous 817sqm block in a sought-after coastal suburb, it's ready for you to move in and enjoy.

- 3 bedrooms, all with air conditioning
- 1 bathroom with separate toilet
- 2 undercover car spaces plus additional off-street parking
- Modern U-shaped kitchen with granite benchtops and stainless steel finishes
- Open plan living and dining with cool floor tiles throughout
- Large undercover outdoor entertaining area
- Garden shed and generous outdoor space on 800+ sqm block
- Close to Charles Darwin University, Royal Darwin Hospital, Tiwi Primary School, and Casuarina Shopping Centre

TYPE: For Rent

INTERNET ID: 300P185105

RENTAL DETAILS

Rent / Lease:

\$680 per week

CONTACT DETAILS

Darwin

70 Smith Street

DARWIN, NT

08 8946 0500

Cathrine Nielsen

0418 872 255

The particulars contained herein are supplied for information only and shall not be taken as a representation in any respect on the part of the vendor or its agent. Interested parties should contact the nominated person or office for full and current details.

- Short drive to beach and local parks

Tiwi offers a coastal lifestyle with excellent access to schools, shopping, university and healthcare facilities. With nearby public transport and green spaces, this location is ideal for families or professionals wanting both convenience and comfort.

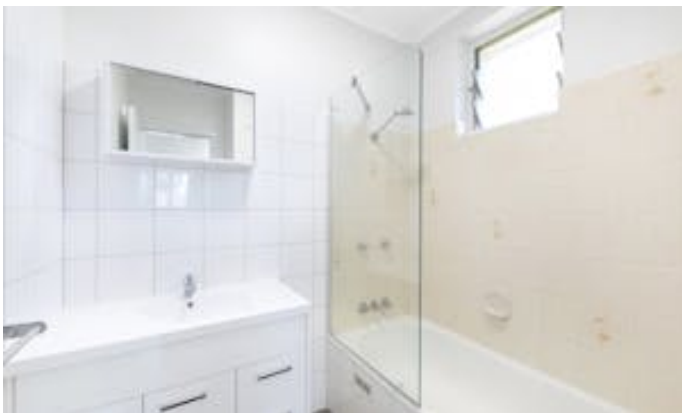
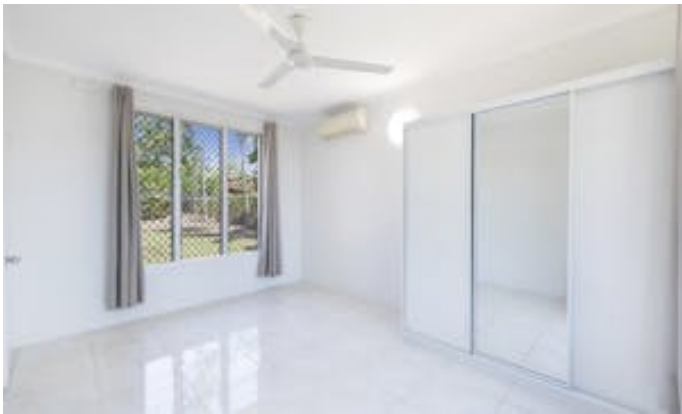
How to apply? A link will be sent via 2Apply once the property has been inspected.

Elders does NOT accept 1FORM applications. Please leave your details to register for the next available inspection.

Other features: Close to Schools, Close to Shops, Close to Transport

- This property is: Unfurnished
- Pets: No
- Available Now
- Bedrooms: 3
- Bathrooms: 1
- Car Parks: 2









52 Glencoe Crescent, Tiwi