



2798 Mansfield-Whitfield Road, TOLMIE, VIC 3723

Ready to swap the hustle and bustle for a lifestyle change?

Elders Mansfield is delighted to bring to the market a rare opportunity to acquire a classic Aussie pub, the Tolmie Tavern, in an iconic part of the Victorian High Country.

Currently open for Friday night dinners, Saturday lunch and dinner, and Sunday lunches, the tavern offers plenty of room for growth. There is enormous potential here for the new owners to extend trading hours, introduce new offerings, and make the most of this thriving local hotspot.

The tavern, unique and full of character, comes complete with a commercial kitchen, bar, dining room, lounge area, and classic booth seating, along with a large deck for outdoor dining. There is also potential to extend the decking to create additional seating capacity and take advantage of the beautiful surroundings.

A cabin is also on site, allowing the new publican or managers to conveniently live on the property. The freehold includes just under 7 acres of land, with plenty of off-street parking available for patrons, along with the possibility of adding accommodation or camping facilities (STCA).

TYPE: For Sale

INTERNET ID: 300P185169

SALE DETAILS

\$865,000 Plus SAV

CONTACT DETAILS

Felicity Kay
0407 141 929

The property also offers outstanding potential to host events such as birthdays, live music, and functions, making it a true hub for both locals and visitors.

Set in the picturesque Tolmie region, this opportunity offers more than just a business, it is a lifestyle. Enjoy the fresh country air, strong community spirit, and proximity to Mansfield, Mt Buller, the High Country, and the renowned wine region of the King Valley.

The sale includes both the freehold and the business, with plant and equipment included, ensuring a seamless transition for the new owners.

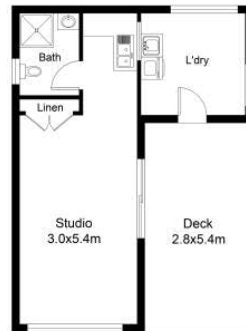
\$865,000 + SAV

For further information, please contact Felicity at Elders Mansfield.

- Land Area 2.824 hectares
- Commercial Type:
- Building Area: 208.00 square metres







(NOT IN POSITION)

