



26 Brodie Street, WHYALLA NORRIE, SA 5608

RELIABLE RENTAL INCOME IN WHYALLA NORRIE!

*** INSPECTION BY APPOINTMENT ONLY DUE TO TENANCY ***

Allotment size: 557m2

Council rates: \$1,934.66 per annum

Water supply & sewer rates: approx \$165 per quarter

Year built: 1971

Zoned: General neighbourhood

Occupancy: Currently tenanted \$270 per week until 1 April 2026

Located in the sought-after suburb of Whyalla Norrie, this property offers convenient access to schools, childcare centres, parks, and Westland Shopping Centre. With a strong sense of community and a steady rental market, the area is highly appealing to tenants. Its proximity to essential amenities and green spaces adds to the suburb's desirability. This makes it an ideal investment for those seeking reliable returns with a secure tenant in place.

The particulars contained herein are supplied for information only and shall not be taken as a representation in any respect on the part of the vendor or its agent. Interested parties should contact the nominated person or office for full and current details.

TYPE: For Sale

INTERNET ID: 300P185227

SALE DETAILS

\$219,000

CONTACT DETAILS

Elders Real Estate - Whyalla

2 Patterson Street

Whyalla, SA

08 8644 4600

RLA: 62833

Jake Pope

0437 829 177

Entry to lounge complete with air-conditioning

Timber flooring flows throughout the lounge and hallway

Three spacious carpeted bedrooms, including one with a ceiling fan

Air-conditioned kitchen and meals area, perfect for comfortable family living

Functional kitchen featuring a gas cooktop and ample cupboard space

Tiled bathroom with separate bath and walk-in shower

Convenient built-in hallway storage

Separate toilet for added practicality

Laundry with concrete flooring and direct outdoor access

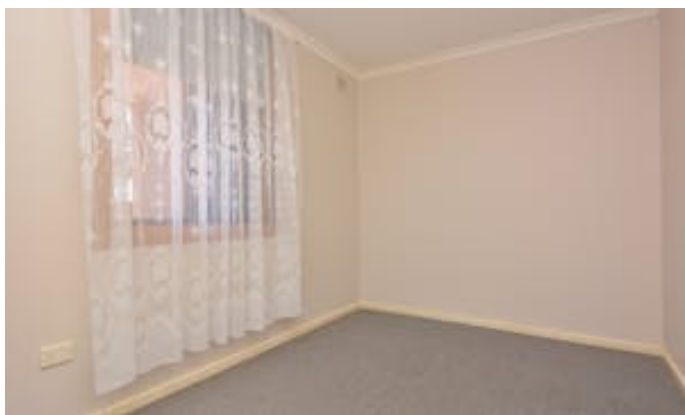
Single carport with double gate entry for secure vehicle access

Powered and concreted shed, perfect for storage or a workshop

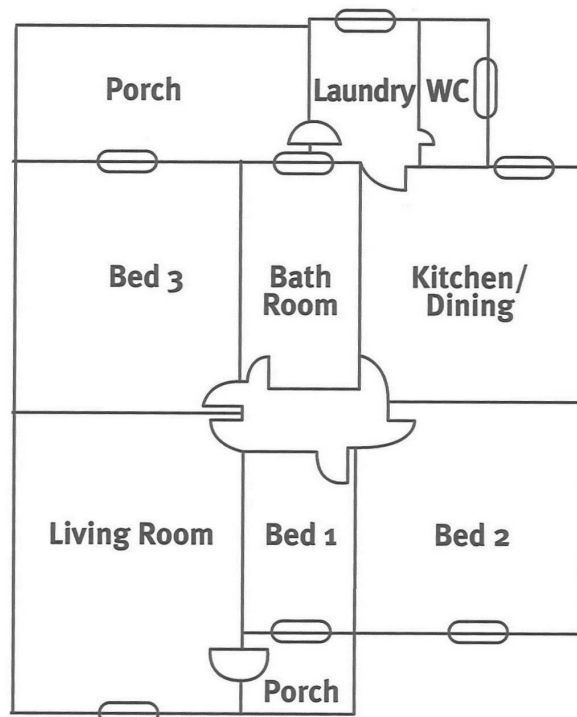
Low-maintenance front and rear yards, designed for easy living

Disclaimer: We have in preparing this information used our best endeavours to ensure that the information contained herein is true and accurate but accept no responsibility and disclaim all liability in respect of any errors, omissions, inaccuracies, or misstatements that may occur. Prospective purchasers should make their own enquiries to verify the information contained herein. Elders Real Estate RLA62833

- Land Area 557.00 square metres
- Bedrooms: 3
- Bathrooms: 1
- Single garage
- Single carport







NOT TO SCALE

For Illustrative Purposes Only