



## 62-64 Bena Road, KORUMBURRA, VIC 3950

### Convenience, Dual Living on 2 Acres

Offering the perfect combination of dual living, usable acreage and town convenience, this lovely lifestyle property is set on approximately 2 acres, just minutes from the heart of Korumburra. Enjoy the ease of nearby shops, schools, caf  s and services, while still embracing the privacy and space of acreage living. Perfectly suited to horse enthusiasts, this property is thoughtfully set up for equine pursuits without sacrificing convenience.

#### Property Features:

Renovated three-bedroom main home

Neat & tidy kitchen includes dishwasher and dual stove

Central bathroom with shower over bath, vanity and toilet

Deck overlooking the property, ideal for relaxing or entertaining

Separate one-bedroom unit providing excellent dual-living flexibility

Approximately 2 acres of usable land

**TYPE:** For Sale

**INTERNET ID:** 300P185342

#### SALE DETAILS

**\$875,000**

#### CONTACT DETAILS

**Elders**  
**Leongatha/Korumburra**  
 37 Bair St  
 Leongatha, VIC  
 03 5662 3523  
**Sharon Turton**  
 0447 604 796

Established fruit trees include; cherry, apricot, nashi, plum, apple, lemon, kiwi fruit, feijoa, avocado & almond

Shedding including stables and horse boxes

Three paddocks ideal for horses or livestock

Creek running through the property

Whether you're accommodating family, guests or generating rental income, this property provides versatility, functionality and a true country lifestyle. A rare opportunity to secure a ready-to-go horse property on manageable acreage, offering the ideal combination of space, lifestyle and convenience, all within easy reach of Korumburra.

Located 20 minutes to the beautiful beaches of Inverloch and only 30 minutes to Wonthaggi, 15 minutes to Leongatha, 1hr 30mins to Melbourne's CBD.

For further information or to inspect the property, please contact:

Sharon Turton â## 0447 604 796

Katrina Griggs â## 0428 571 083

For a Due Diligence Checklist go to: [consumer.vic.gov.au/duediligencechecklist](http://consumer.vic.gov.au/duediligencechecklist)

- Land Area 8,091.00 square metres
- Bedrooms: 4
- Bathrooms: 2
- Car Parks: 3







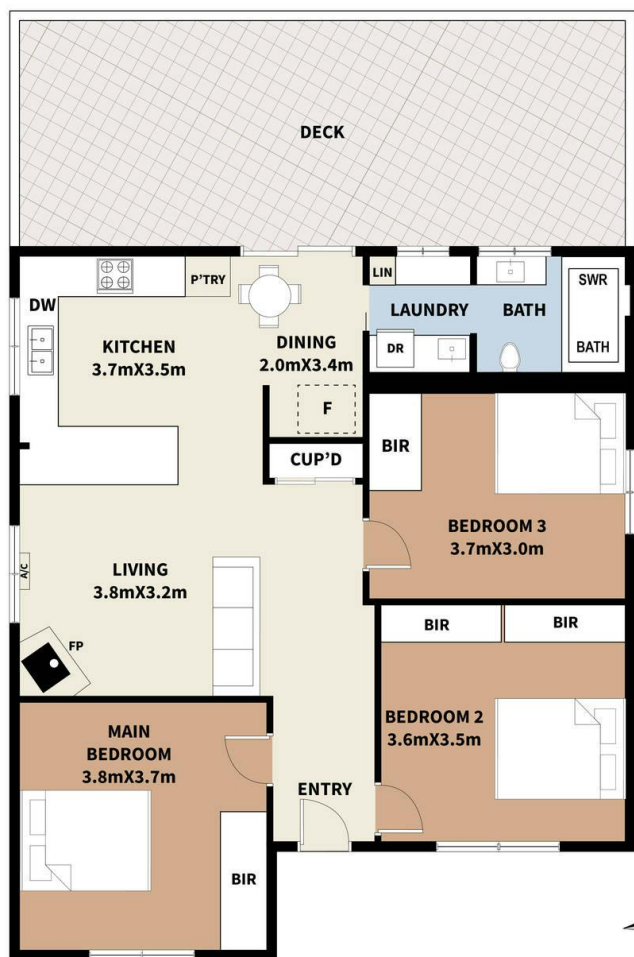




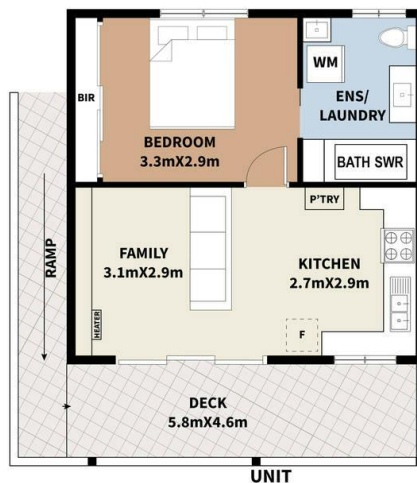








MAIN HOUSE



UNIT



62-64 BENA ROAD  
KORUMBURRA

