



3 George Street, CHASM CREEK, TAS 7321

Unique Coastal Retreat

Welcome to 3 George Street, Chasm Creek, a truly unique coastal property that blends artistic flair with relaxed living. Set on a generous 1,040m² block with beautiful gardens, this classic three bedroom, one bathroom home was originally built in 1959 and offers more than just a residence, it's a versatile space designed to cater to both comfortable everyday living and creative pursuits.

Step inside to discover light filled interiors that immediately create a warm and inviting atmosphere. The practical kitchen is perfectly positioned to serve the open-plan living and dining area, where a reverse cycle system ensures year round comfort. From here, sliding doors open onto a spacious outdoor deck, capturing sweeping views across Bass Strait, the ideal backdrop for entertaining or simply unwinding at the end of the day. The centrally located bathroom is well appointed with a bath, shower, and toilet. Each of the three bedrooms includes built-in wardrobes for easy storage, while the master bedroom elevates the experience with its own reverse-cycle system and stunning ocean outlook.

What truly sets this property apart is the additional spaces it provides. A large second living area that was previously used as an art studio offers a rare opportunity for creatives, hobbyists, or those who work from home. Outside you will also find an undercover area leading to a separate workshop and storage shed that add even more

TYPE: For Sale

INTERNET ID: 300P185357

SALE DETAILS

\$580,000

CONTACT DETAILS

Elders Real Estate Burnie

72-74 Wilson Street
Burnie, TAS
03 6432 2311

Jorja O'Halloran
0409 039 608

The particulars contained herein are supplied for information only and shall not be taken as a representation in any respect on the part of the vendor or its agent. Interested parties should contact the nominated person or office for full and current details.

versatility. With a garage and carport, there is plenty of room for vehicles, boats, or caravans, making it a practical choice for buyers who love the outdoors.

Positioned a short drive to Wivenhoe and Burnie's CBD yet tucked away in Chasm Creek, the property enjoys the best of both worlds: peaceful living with the convenience of nearby services. The block's size allows space for families to spread out, children to play safely, or gardeners to create their own outdoor haven. From the elevated position, glimpses of Bass Strait add to the appeal, giving the home a unique sense of place.

Whether you're seeking a spacious family home, or a private retreat by the coast, 3 George Street offers a rare blend of space, versatility, and location. With its generous block, creative spaces, and proximity to Burnie, this property truly is a lifestyle opportunity not to be missed.

DISCLAIMER: While Elders Real Estate Burnie has taken every care to verify the accuracy of the details in this advertisement, we cannot guarantee its correctness. Prospective buyers or tenants need to take such action as is necessary, to satisfy themselves of any pertinent matters

- Land Area 1,040.00 square metre
- Building Area: 173.00 square metres
- Bedrooms: 3
- Bathrooms: 1
- Single garage
- Single carport

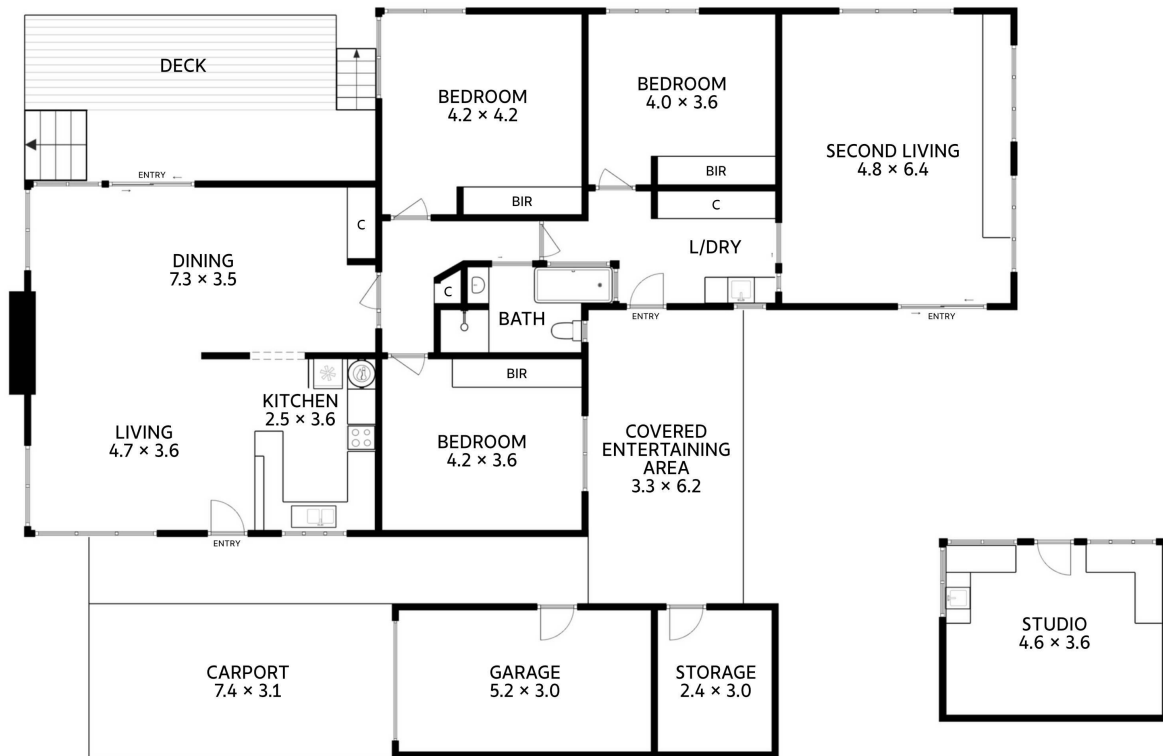








3 George Street Chasm Creek



Approx. Floor Area 159 sq m
(excluding deck, carport, garage, storage, covered entertaining area and studio)

All measurements are internal and approximate.
This plan is a sketch for illustration, not valuation.

