

14 McInness Street, WHYALLA JENKINS, SA 5609

PROFITABLE PROPERTY ON MCINNESS STREET!

*** INSPECTION BY APPOINTMENT ONLY DUE TO TENANCY ***

Allotment size: 558m2

Council rates: \$2,278.86 per annum

Water supply & sewer rates: approx \$165 per quarter

Year built: 2015

Zoned: General neighbourhood

Occupancy: Currently tenanted \$400 per week until 13 July 2026

Secure a fantastic investment in the highly sought-after Ocean Eyre Estate, with a reliable tenant in place until July 2026. This property offers immediate returns and peace of mind, set in a friendly neighbourhood with a strong community feel. Enjoy the convenience of being within walking distance to a local park, a short drive to Jubilee Park, and close to shopping facilities. Low-maintenance and perfectly positioned, this home is an ideal addition to any investment portfolio.

The particulars contained herein are supplied for information only and shall not be taken as a representation in any respect on the part of the vendor or its agent. Interested parties should contact the nominated person or office for full and current details.

TYPE: For Sale

INTERNET ID: 300P185379

SALE DETAILS

OFFER ACCEPTED

CONTACT DETAILS

Elders Real Estate - Whyalla

2 Patterson Street

Whyalla, SA

08 8644 4600

RLA: 62833

Jake Pope

0437 829 177

Entry to hallway with floating floorboards flowing seamlessly into the spacious open-plan living, kitchen, and meals area

Modern kitchen featuring stainless steel appliances, dishwasher, gas cooktop, and abundant storage

Sliding doors from the living area opening to a paved outdoor alfresco, perfect for entertaining

Four carpeted bedrooms, each with built-in robes

Master bedroom located at the rear of the home for added privacy, complete with a private ensuite

Main bathroom with separate bath, walk-in shower, and a separate toilet

Convenient built-in hallway cupboards for extra storage

Ducted reverse cycle air-conditioning throughout the home

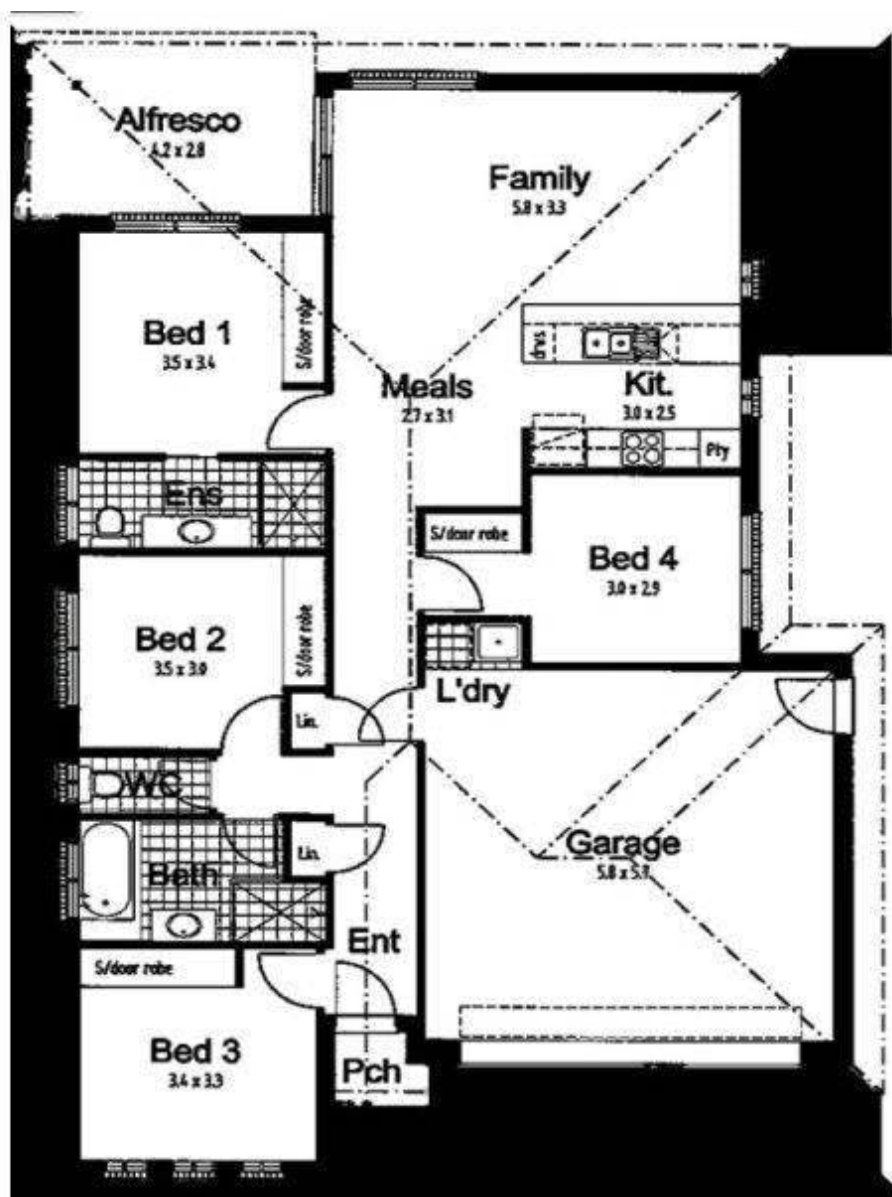
Double garage with automatic roller door, internal and external access, plus a tiled laundry area

Disclaimer: We have in preparing this information used our best endeavours to ensure that the information contained herein is true and accurate but accept no responsibility and disclaim all liability in respect of any errors, omissions, inaccuracies, or misstatements that may occur. Prospective purchasers should make their own enquiries to verify the information contained herein. Elders Real Estate RLA62833

- Land Area 558.00 square metres
- Bedrooms: 4
- Bathrooms: 2
- Double garage







totality