

21 Seaview Crescent, NORMANVILLE, SA 5204

A home to slow down, stretch out, and simply enjoy

Perched in a quiet pocket overlooking Normanville, this home is all about space, comfort, and an outlook that never gets old.

From your living room chair, the view sweeps across the township to the sparkling sea and on towards Rapid Head, a reminder every day of just how lucky you are to live here.

Inside, the home is warm and inviting, with timber floors underfoot and sunlight spilling through wide windows. There's plenty of room for family and friends to visit with four bedrooms, two bathrooms, and multiple living areas, yet it never feels too big when it's just you.

A peaceful retreat has been created with the main suite positioned at one end of the home, complete with a walk-in robe and ensuite with bidet.

At the opposite end, three additional bedrooms are well-positioned for privacy, each with built-in robes and ceiling fans, while two also enjoy the comfort of split-system air conditioning.

TYPE: For Sale

INTERNET ID: 300P185431

SALE DETAILS

\$920,000 to \$980,000

CONTACT DETAILS

Normanville

91 Main Road
Normanville, SA
08 8598 6100

Cassie Edwards

0400 856 900

The kitchen makes cooking a pleasure with quality, well-maintained appliances, stacks of storage and that incredible view framed right in front of you.

Step outside, and the lifestyle only gets better. Morning tea on the verandah, evenings under the pergola with a glass of wine, or tending to the orchard and veggie patch at your own pace.

The gardens are well established and easy to maintain, supported by a huge 120,000L water tank. You'll also find a large garden shed, fully enclosed raised veggie beds, and a productive orchard.

Tucked away at the back of the block is a brilliant 9m x 8m shed. One half is fully lined, air-conditioned, and set up with storage, while the other half is designed as a workshop - an ideal space for hobbies, projects, or extra storage

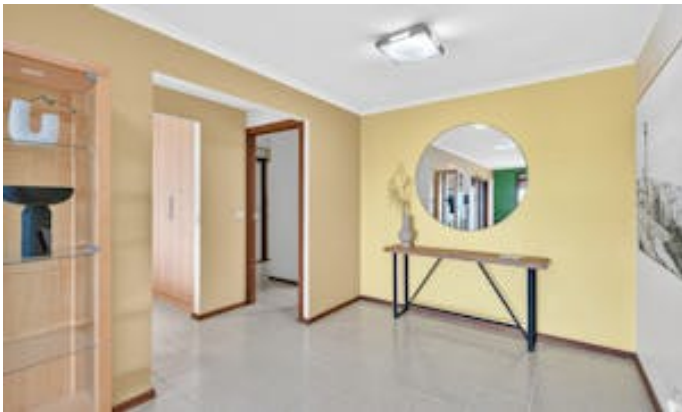
Practical comforts are all here too: solar panels with battery storage (leaving you in credit each summer), a heat pump hot water system, four split-system air conditioners, and a double carport for easy parking.

This is a home that invites you to take life slower, to enjoy the space around you, and to share it with the people who matter most. Whether it's quiet evenings watching the sunset or long weekends with family gathered, 21 Seaview Crescent offers a lifestyle you'll fall in love with every single day.

Disclaimer: We have in preparing this information used our best endeavours to ensure that the information contained herein is true and accurate but accept no responsibility and disclaim all liability in respect of any errors, omissions, inaccuracies or misstatements that may occur.

Other features: Disabled Access, Ocean Views, Openable Windows, Water Views

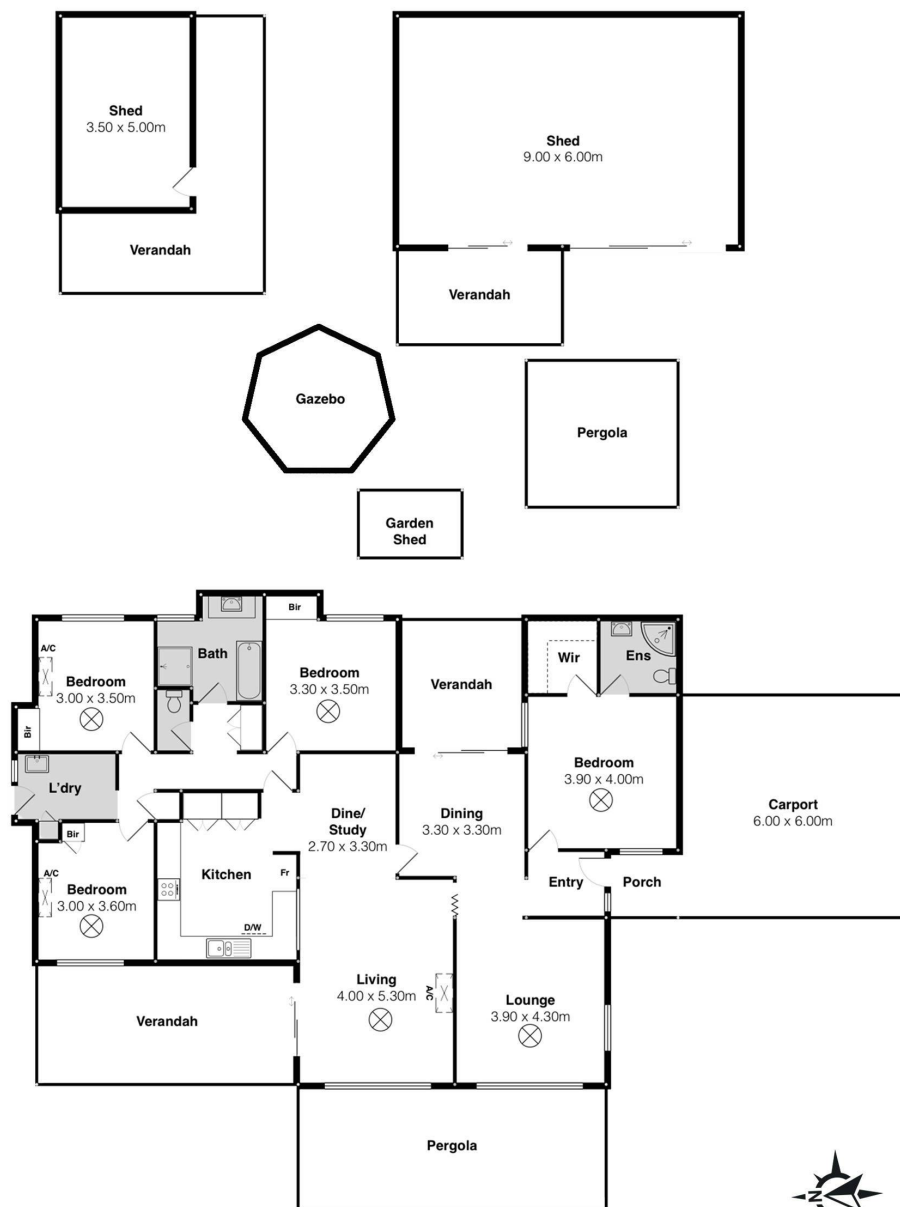
- Land Area 1,750.00 square metre
- Building Area: 195.00 square metres
- Bedrooms: 4
- Bathrooms: 2
- Double carport
- Ensuite
- Floorboards











21 Seaview Cres, Normanville

Scale in metres. This drawing is for illustration purposes only. All measurements are approximate and details intended to be relied upon should be independently verified.



PRODUCED BY
SOUTH COAST STUDIOS