



1 Henderson Street, WHYALLA NORRIE, SA 5608

STRONG INVESTMENT APPEAL

Allotment size: 600m²

Council rates: \$2,049.41 per annum

Water supply & sewer rates: approx \$165 per quarter

Year built: 1960

Zoned: General neighbourhood

Rental appraisal: Available upon request

Occupancy: Vacant

Positioned on a corner block in the desirable Whyalla Norrie suburb, this upgraded home offers modern comfort and style. Enjoy the convenience of being within walking distance to shops, schools, and Bennett Oval. With strong rental appeal, this property makes an excellent investment or future home.

Entry to a carpeted lounge featuring air-conditioning and a ceiling fan

The particulars contained herein are supplied for information only and shall not be taken as a representation in any respect on the part of the vendor or its agent. Interested parties should contact the nominated person or office for full and current details.

TYPE: For Sale

INTERNET ID: 300P185490

SALE DETAILS

\$269,000

CONTACT DETAILS

Elders Real Estate - Whyalla

2 Patterson Street

Whyalla, SA

08 8644 4600

RLA: 62833

Jake Pope

0437 829 177

Stylish barn door opening to the hallway

Three carpeted bedrooms, all with ceiling fans, two with split system air-conditioning

Modern upgraded kitchen and meals area with large electric oven, dishwasher and ample cupboard storage

Upgraded tiled bathroom

Built-in hallway storage for added convenience

Laundry with separate toilet, generous storage, and direct rear yard access

Undercover decked entertaining area with ceiling fans

Shedding with roller door access

Rumpus room complete with air-conditioning and built-in storage

Garage with automatic roller door for secure parking

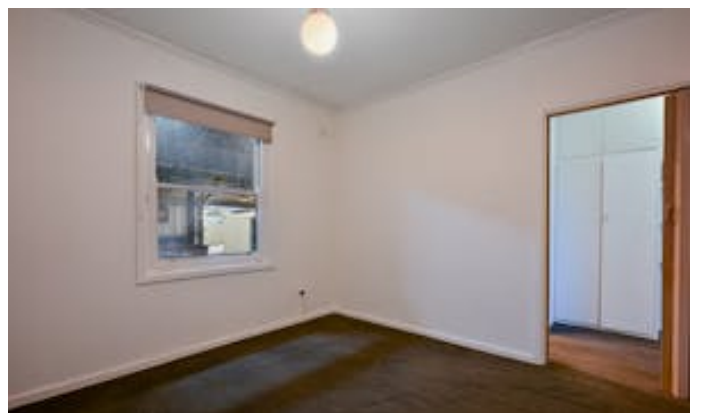
Rear lane access behind shedding, ideal for storing boats, cars, caravans, trailers etc

Established front and rear yards designed for low-maintenance living

Securely fenced front yard with sliding gate for added privacy and security

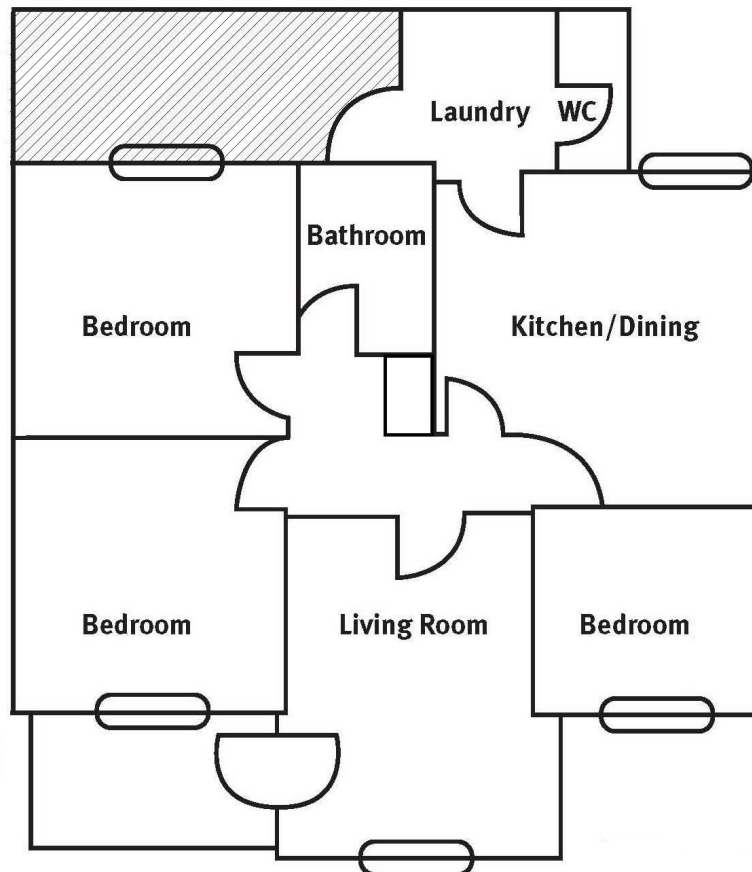
Disclaimer: We have in preparing this information used our best endeavours to ensure that the information contained herein is true and accurate but accept no responsibility and disclaim all liability in respect of any errors, omissions, inaccuracies, or misstatements that may occur. Prospective purchasers should make their own enquiries to verify the information contained herein. Elders Real Estate RLA62833

- Land Area 600.00 square metres
- Bedrooms: 3
- Bathrooms: 1
- Single garage
- Double carport









NOT TO SCALE

For Illustrative Purposes Only