



51 Hillview Road, EUROA, VIC 3666

Family Lifestyle with Pool, Tennis Court on Five Acres

On the edge of town, this five-acre property offers a rare combination of space, lifestyle, and modern convenience. It has been many years since a home with both a swimming pool and tennis court has been offered to the Euroa market, making this an opportunity not to be overlooked.

The home is set behind solar entry gates and surrounded by established gardens and mature trees. A two-storey floorplan provides formal and casual living zones, with a modern kitchen at the heart of the home. The ground floor includes multiple living and dining areas, supported by an underfloor ducted heating system, split systems to key rooms, and polished timber floors. Upstairs, four bedrooms provide comfortable accommodation, with the master featuring an ensuite and three opening onto the wraparound verandah with garden views. Bathrooms include the added benefit of underfloor heating whilst the family bathroom boasts a spa bath.

The property is designed for year-round living. Outside, a broad covered deck with roll-down blinds and a gazebo provide entertaining spaces, while the solar-heated swimming pool with automatic cleaning system and full-size tennis court ensure recreation is always close at hand.

TYPE: For Sale

INTERNET ID: 300P185595

CONTACT DETAILS

Euroa

27 Binney Street
EUROA, VIC
03 5795 2294

Brendan Allen
0499 229 007

Practical features support a self-sufficient lifestyle. These include 18 solar panels (installed 2024) with Tesla battery backup, a 3,000-litre LPG tank, solar hot water system, mains water supplemented by bore and rainwater, plus irrigation throughout the gardens and lawns. The property also offers a centralised vacuum system for easy cleaning.

Established orchard plantings add further appeal, including orange, lemon, plum, apricot, peach, apple, pear, cherry, grapefruit, and mandarin trees. A rear paddock lends itself to an array of hobby farming pursuits or business ventures with the potential for additional shedding (STCA)

This is a property that brings together family living, recreation, and self-reliance - a rare offering in the Euroa district.

Other features: Area Views, Car Parking - Surface, Carpeted, Close to Schools, Close to Shops, Openable Windows

- Land Area 2.08 hectares
- Bedrooms: 4
- Bathrooms: 2
- Double garage

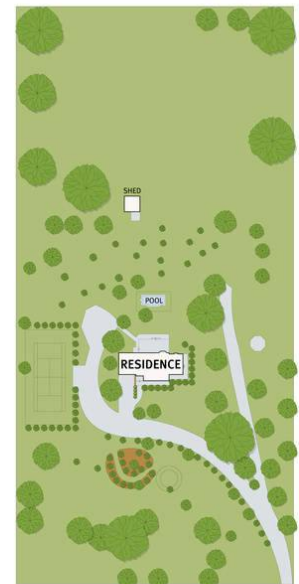
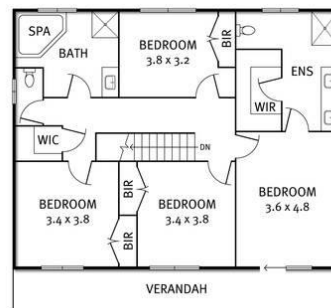
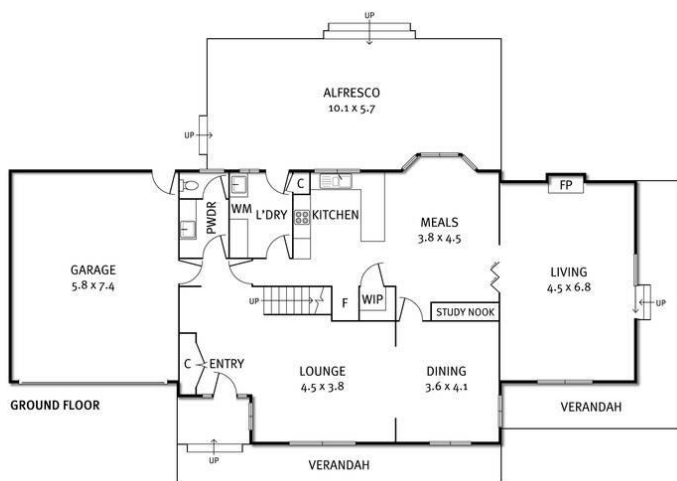








51 Hillview Road, Euroa



THE ABOVE PLAN IS AN ARTIST'S IMPRESSION ONLY, IT INCLUDES ELEMENTS THAT ARE FOR DISPLAY PURPOSES ONLY AND MAY NOT BE TO SCALE. LANDSCAPING SHOWN IS INDICATIVE ONLY. DIMENSIONS ARE APPROXIMATE.