



8-10 Platt Street, EUROA, VIC 3666

Charming Double-Fronted Block with Balmattum Hill Views

Perfectly positioned just moments from Euroa's shops, schools, and medical facilities, this rare double-fronted block offers an exciting combination of lifestyle, charm, and future potential.

The home itself carries an appealing 1960s character, with beautiful period features including stunning timber-paneled walls and original built-in cabinetry that reflect the era's distinctive style, balanced by modern updates including new flooring, a refreshed kitchen, and fresh paint throughout. From the front rooms, enjoy incredible views across to the iconic Balmattum Hill—a stunning natural backdrop to everyday living.

Accommodation includes three spacious double bedrooms with ceiling fans for year-round comfort, one with an ensuite toilet and a central family bathroom, while outside, the versatile "Pink Room" offers an ideal rumpus space or outdoor studio/home office, also boasting new flooring.

Established gardens frame the property, complemented by a lock-up garage for secure parking and storage. With its substantial landholding, the property also presents subdivision potential (STCA), making it an attractive option for both homebuyers and investors.

The particulars contained herein are supplied for information only and shall not be taken as a representation in any respect on the part of the vendor or its agent. Interested parties should contact the nominated person or office for full and current details.

TYPE: For Sale

INTERNET ID: 300P185600

SALE DETAILS

\$595,000

CONTACT DETAILS

Euroa
27 Binney Street
EUROA, VIC
03 5795 2294

Brendan Allen
0499 229 007

Key Features:

- Double-fronted block in a sought-after Euroa street
- Three double bedrooms with ceiling fans, one with ensuite toilet
- Updated kitchen, new flooring, freshly painted
- Original 1960s features and timber paneling
- "Pink Room" - ideal rumpus or outdoor studio
- Lock-up garage and established gardens
- Spectacular Balmattum Hill views from front rooms
- Subdivision potential (STCA)

Other features: Car Parking - Surface, Carpeted, Close to Schools, Close to Shops, Roller Door Access

- Land Area 1,537.00 square metre
- Bedrooms: 3
- Bathrooms: 1
- Car Parks: 2
- Single garage

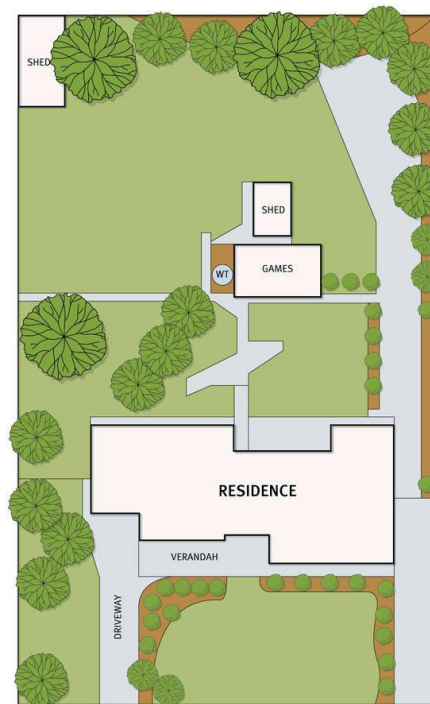
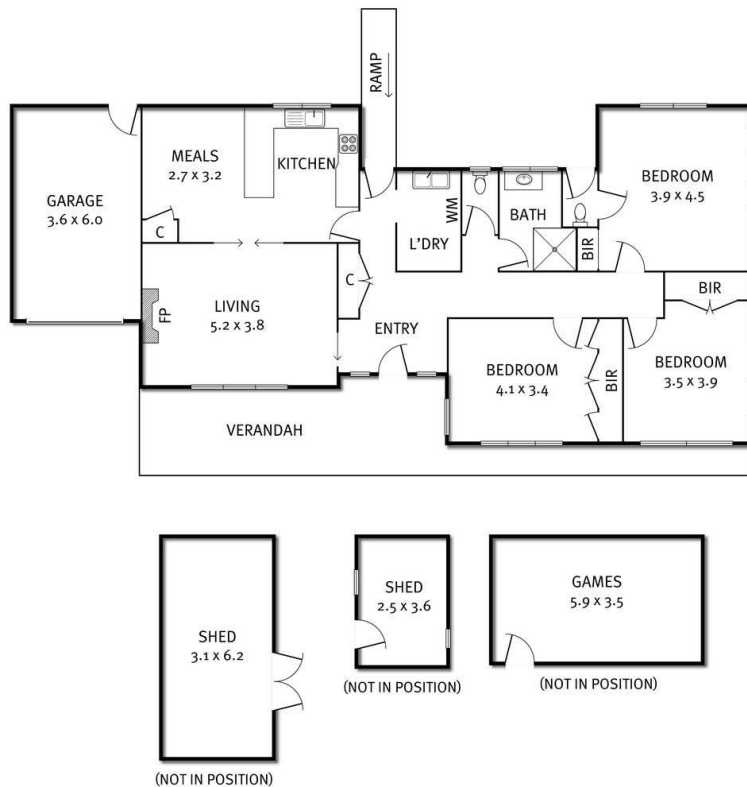






8-10 Platt Street, Euroa

Elders



THE ABOVE PLAN IS AN ARTIST'S IMPRESSION ONLY, IT INCLUDES ELEMENTS THAT ARE FOR DISPLAY PURPOSES ONLY AND MAY NOT BE TO SCALE.
LANDSCAPING SHOWN IS INDICATIVE ONLY. DIMENSIONS ARE APPROXIMATE.