



24 Pearse Street, STANLEY, TAS 7331

Historic Bluestone School and Residence

Here is a once in a lifetime opportunity to own a piece of Stanley's history.

Circa 1866 the original Bluestone State School was constructed on land donated by the Van Diemens Land Company. The building was designed by Government Architect Henry Hunt and built by local builder John Alford. Its most famous student was the late Hon. Joseph A. Lyons who went on to become Tasmanian Premier from 1921 to 1928 and later Australian Prime Minister from 1932 to 1939.

The property was used full time for the towns public School up until 1914 then on and off for community purposes until passing into private hands for the first time in 2002.

The Victorian Gothic Bluestone building is a prominent feature of the Stanley township and is listed on the Tasmanian Heritage Register. Its central location makes it visible from most of the town and it enjoys panoramic ocean views across both Tatlows and Sawyers Bay, farmland, and Highfield House, the original VDL company headquarters.

The home features three bedrooms (two upstairs) each with their own open fireplace. The living area consists of a formal lounge and combined kitchen dining area. The living area features polished Myrtle floors throughout and a dining area to maximise the outlook from across the Bay. A lovely sunroom extends the width of the home on the northern side. A warm and cosy spot to sit with a coffee or wine taking in the views.

TYPE: For Sale

INTERNET ID: 300P186120

SALE DETAILS

EOI over \$800,000

CONTACT DETAILS

Duncan Spinks
0429 352 004

The original School building measures 15.2 metres by 6.2 metres with high ceilings and exposed beams and two more open fireplaces is a blank canvas of possibility for the new owner. Art studio, guest accommodation or cafe? What are your ideas for its future use?

There is a separate ancillary building which incorporates the laundry with a separate shower and toilet room. A fantastic option to rinse off after a swim at the beach â## which is only 450 metres away! Also, there is a single car garage and storage underneath the home.

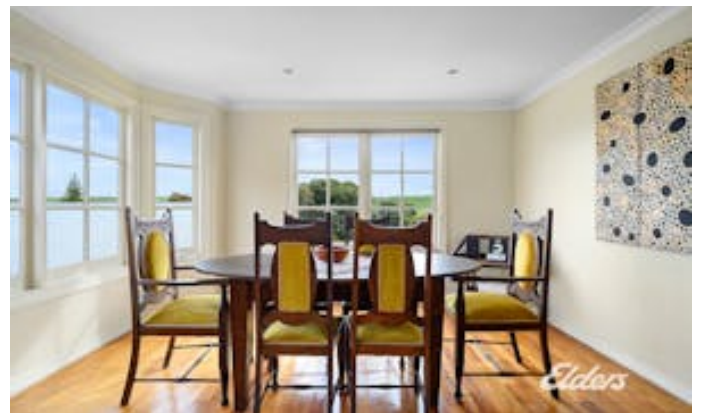
The picturesque award-winning coastal town of Stanley offers an enviable lifestyle. A range of beaches, fantastic fishing, a nine-hole golf course and quality local produce at a range of cafes and restaurants. All this while enjoying a safe, relaxed laid back lifestyle. All this with the spectacular Stanley Nut as a breathtaking back drop.

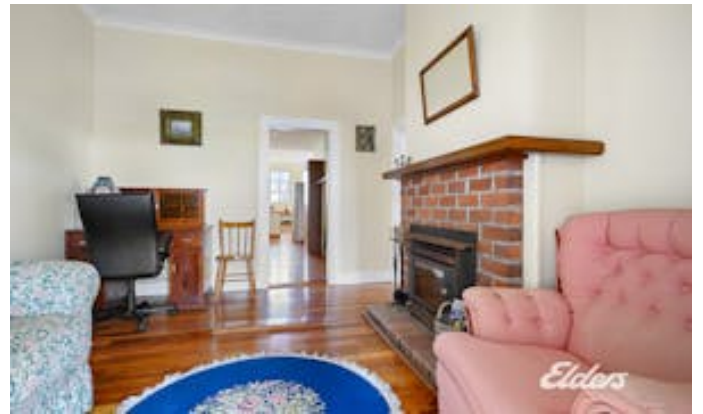
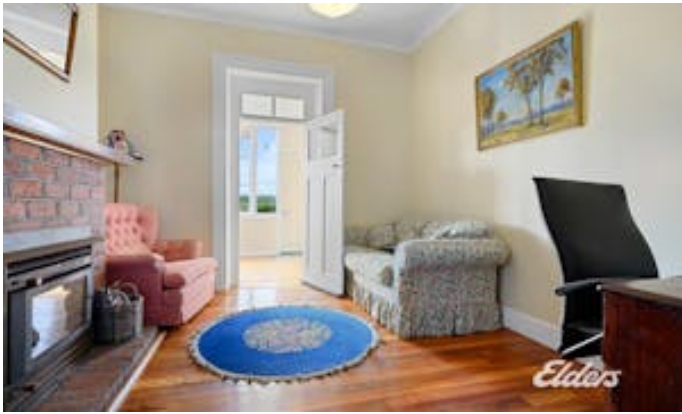
Expressions of interest Offers over \$800,000 by October 31st

Other features: Area Views, Water Views

- Land Area 1,085.00 square metre
- Building Area: 285.00 square metres
- Bedrooms: 3
- Bathrooms: 2
- Car Parks: 1
- Single garage
- Floorboards











Elders Circular Head
All measurements are internal and approximate.
This plan is a sketch for illustration, not valuation.
Not to scale.
Approx total floor area 310 sq m