



## 19 Main Street, EILDON, VIC 3713

### Pixies at the Billabong...

#### A One-of-a-Kind Freehold Opportunity in a Prime Location

Step into something truly special with Pixies at the Billabong â## an iconic property set in arguably the best position in Eildon, directly opposite the brand-new water theme park. This standout venue has been transformed from a forgotten shell into a vibrant, fully renovated entertainment and hospitality space that radiates charm and creativity.

Purposefully designed to host live music, theatre, fine dining, and private events, the property comes fully equipped with top-tier concert sound and lighting production. With a total seating capacity of 500 across indoor and outdoor areas, this is an entertainer's dream.

The commercial kitchen is ready for immediate use, while the adjoining, fully upgraded two-bedroom apartment offers convenient on-site living or rental potential. Offered WIWO (walk-in walk-out), it includes high-quality plant and equipment throughout.

An extensive solar setup with over 72 roof-mounted panels ensures sustainability and long-term energy efficiency. The property commands attention in the heart of town and is ready for a new chapter.

Selling due to health reasons. This is a rare chance to secure a unique, high-potential venue in one of Victoria's most scenic and growing destinations.

The particulars contained herein are supplied for information only and shall not be taken as a representation in any respect on the part of the vendor or its agent. Interested parties should contact the nominated person or office for full and current details.

**TYPE:** For Sale

**INTERNET ID:** 300P186123

#### SALE DETAILS

[Contact Agent.](#)

#### CONTACT DETAILS

**Alexandra**

Shop 1, 6 Webster Street  
Alexandra, VIC  
03 5772 1052

**John Tossol**

0419 558 032

Don't miss out â## opportunities like this don't come around often!

Think brewery, distillery, art gallery, weddings, parties, anything!!!...

- Land Area 1,232.00 square metre
- Commercial Type:
- Building Area: 568.00 square metres







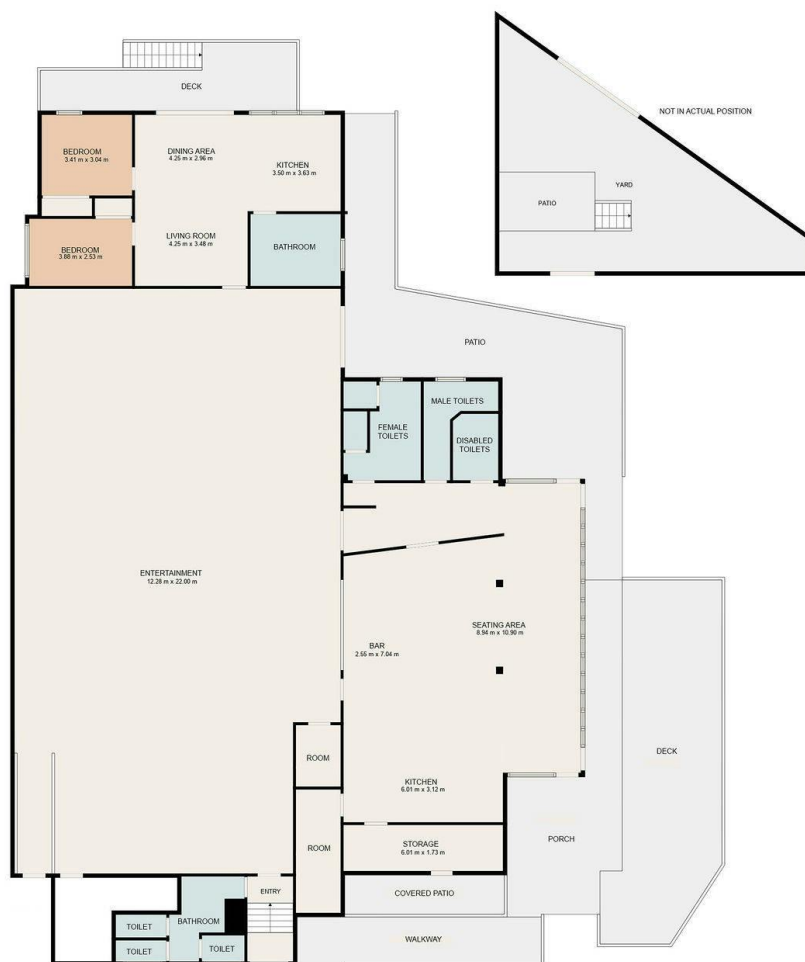








“Pixies”  
10 Main St, Eildon



EVERY CARE HAS BEEN TAKEN TO VERIFY THE ACCURACY OF THE INFORMATION CONTAINED HEREIN BUT NO WARRANTY IS GIVEN AND PERSPECTIVE BUYERS ARE ADVISED TO MAKE THEIR OWN INVESTIGATIONS. ALL AREAS, SIZES AND DIMENSIONS SHOWN ARE APPROXIMATE ONLY.





