



145 Hill Sixty Road, EL ARISH, QLD 4855

A Private Tropical Retreat with Ocean & Island Views

Nestled in absolute privacy with a stunning backdrop of World Heritage National Park which the property borders on two sides and sweeping views across to the Coral Sea and islands, this 21-acre property is a rare sanctuary.

Whether you're inspired by writing, art, music, or simply the beauty of nature, this tranquil setting will bring out your best.

The Residence

Perched on the high point of the property, the single-level, core-filled rendered block home captures 180° panoramic views over El Arish to the coast, seven islands including the Barnard Island Group. Expansive wrap-around verandahs double the living space, creating a seamless indoor-outdoor lifestyle while harnessing the cooling sea breezes.

- Master Retreat: Exceptionally spacious with full-length wardrobes and a dedicated home theatre set-up for movie nights.

The particulars contained herein are supplied for information only and shall not be taken as a representation in any respect on the part of the vendor or its agent. Interested parties should contact the nominated person or office for full and current details.

TYPE: Under Contract

INTERNET ID: 300P186248

SALE DETAILS

Under Offer

CONTACT DETAILS

**Elders Real Estate
Innisfail**

Lot 4 Goondi Mill Road
Innisfail, QLD
07 4063 4900

Andy Jones
0482 942 642

- Bedrooms: Two additional air-conditioned rooms with built-ins, ceiling fans, and spectacular sunrise views.
- Office: Well-appointed for working from home.
- Design Features: Custom built-in wardrobes echo Japanese 'Shoji' styling, blending effortlessly with rendered interiors.
- Bathroom: Slate flooring and wall tiles, complemented by a rainforest-inspired walk-in shower and separate toilet.
- Kitchen: The heart of the home â## an oversized island bench, abundant workspace with Granite benchtops, and premium appliances including Gaggenau cooktop, Beko dishwasher, and Electrolux oven. From here, the views are simply unforgettable.
- Living Area: Large open-plan lounge with bi-fold doors on two sides opening directly onto the verandah, creating a light-filled space where the indoors meets the outdoors.

The Grounds

- Palm-lined concrete driveway leading to the elevated home.
- Lush tropical gardens filled with colourful flowers, birdlife, and butterflies.
- Two main paddocks at the entrance â## one with a large machinery shed ideal for storage of mowers, trailers, and equipment.
- 38 established fruit trees, expansive vegetable gardens, and space for self-sufficient living.
- A year-round creek flowing through the property with an additional cleared paddock beyond.
- A myriad of wildlife including Cassowaries and Wallabies roam the property.

Utilities

- Town water supply and rainwater catchment tanks
- Additional pure water sourced directly from the rainforest creek
- Septic system
- 5.5 kW solar system with battery storage
- Mains power connection

Location

- 3 minutes to El Arish Pub, Butcher, Post Office & School
- 13 minutes to Bingil Bay
- 15 minutes to Mission Beach or Tully
- 40 minutes to Innisfail

- 1 hour 40 minutes to Cairns

Nearby Boat Ramps:

- 15 minutes to Clump Point
- 25 minutes to Mourilyan Harbour
- 30 minutes to Tully Heads

This property is a lifestyle masterpiece that must be experienced to be fully appreciated.

Call Andy Jones on 0482 942 642 to arrange your private viewing today.

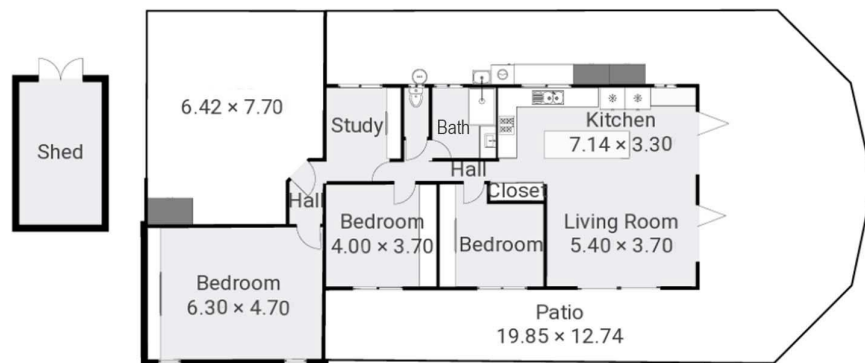
- Land Area 21 acres
- Bedrooms: 3
- Bathrooms: 1
- Car Parks: 2











DETAILS
Total area: 420.05 m²
Living area: 140.01 m²

THIS FLOORPLAN IS PROVIDED WITHOUT WARRANTY OF ANY KIND. DIGITAL EDGE MEDIA DISCLAIMS ANY WARRANTY INCLUDING, WITHOUT LIMITATION, SATISFACTORY QUALITY OR ACCURACY OF DIMENSIONS.

0 4 8 12m
1:361



**145 HILL SIXTY ROAD,
JAFFA**